

TECH News

A TECHNICAL ROOFING PUBLICATION BY VERSICO ROOFING SYSTEMS | SUMMER 2016

In This Issue

New CCM Training Center



Warranty Storefront



Q&A From the Field



Project Review and Design

Email Contact List



Versico Inspection Checklists



Inspection Tips



Roofer's Bucket for Inspections



Additional Training Dates
Have Been Added in Some Locations



Cricket Design Guidelines
for Tapered Polyiso



Featured Detail – RB-2



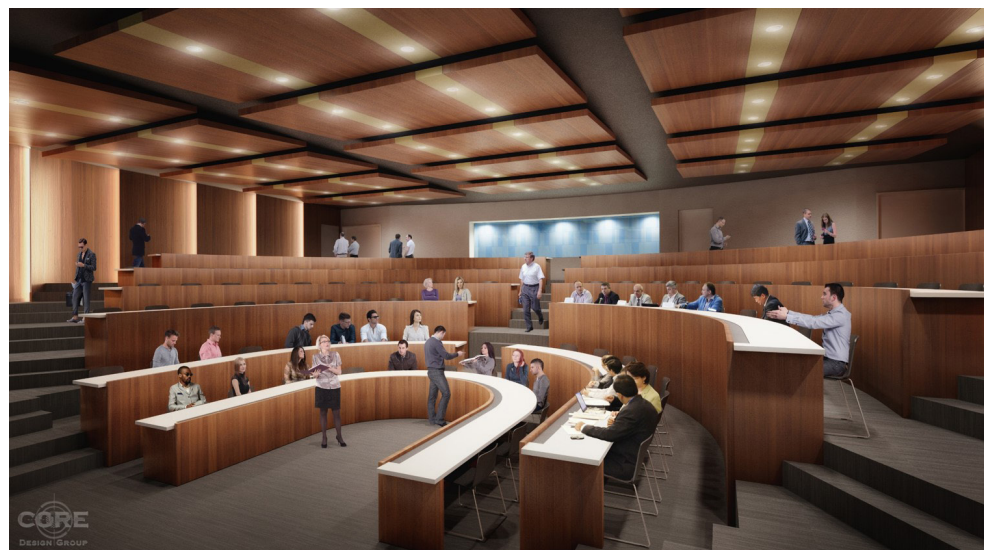
Featured 3-D Details



Protecting Yourself from Heat Illness

New CCM Training Center

Carlisle Construction Materials is pleased to announce that it will soon begin construction on a state-of-the-art new training center. The new CCM training center, scheduled to open in late 2017, will be used for hands-on and classroom-style training for roofing contractors, architects, roofing consultants, and employees. The facility will include a 125-person conference auditorium with tiered seating, as well as multiple breakout rooms, offices, and conference rooms.



Warranty Storefront

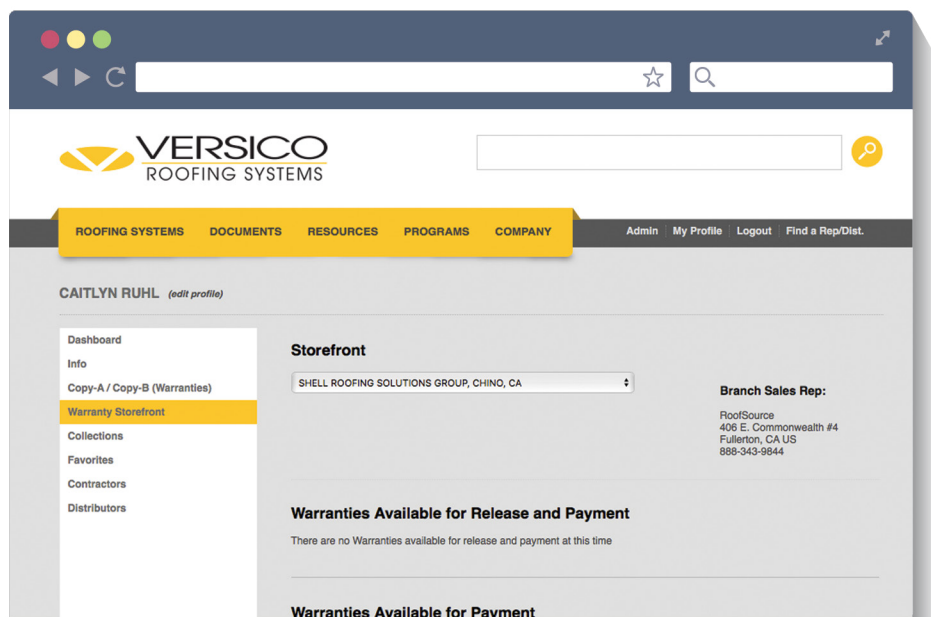
Versico's Warranty Storefront is a simple and convenient new way for authorized contractors to select and pay for warranties online. Accessible via the [Versico Roofing Systems website](#), the Warranty Storefront allows contractors to view their open jobs and choose and pay for warranties with the click of a button.

To access the Warranty Storefront, log in to [Versico's website](#) and click on your username at the top of the page to view your profile. Click on the Warranty Storefront tab on the left side of your profile page to view open jobs and select and pay for warranties online. Once the transaction is concluded, you will be able to access, download, and print your warranty the following business day.

With the addition of the Warranty Storefront, Versico now offers contractors a number of warranty payment methods:

- Instantly pay by credit card using the Warranty Storefront.
- Call Versico's Customer Financial Services Department to make a credit card or check by phone payment.
- Mail payment to the remittance address on the invoice.

If you have questions or concerns about Versico's Warranty Storefront, please contact your Versico Independent Sales Representative.



Q&A From the Field

Can Termination Bar be installed through wood?

No. Wood that is exposed to the elements does not provide a sufficient termination point for a Versico system because it is not waterproof.

Can I use splice adhesive to repair a warranted Versico roof system?

No. Splice adhesive cannot be used on any Versico warranted system.

Is it acceptable to field-fabricate outside corners on a TPO system with a 20-year warranty?

Yes. Field-fabricated TPO outside corners are acceptable for warranties up to 20 years per TPC-15 details.

Once applied, how long is Water Cut-Off Mastic effective?

As long as the Water Cut-Off Mastic is not exposed to UV, it should remain pliable.

Which three details require membrane securement 12" away from and/or 12" around the penetration?

VGMA-6.0, VGMA-8.1, AND VGMA-8.2

Project Review and Design Email Contact List

Jeff.Snyder@versico.com

Duane.Schrade@versico.com

Ariel.Andrejev@versico.com

Robin.Levens@versico.com

Brian.Chamberlain@versico.com

John.Souders@versico.com

Ken.Gingerich@versico.com

Versico Inspection Checklists

Did you know Versico offers foldable inspection checklists for **EPDM**, **TPO**, and **PVC** systems? These checklists illustrate the minimum requirements of a roof inspection to help contractors ensure that all items are completed before the final inspection so that no re-inspections or RFW items are required and crews can move on to the next job. Visit Versico's website for more information.



Inspection Tips

Here are some tips contractors can use, both during projects and prior to inspection, to help ensure the roof passes inspection the first time around.

General

- Prior to inspection, all work must be completed, including roofing, metal, curbs, and details.
- It is the contractor's responsibility to grant the inspector access to the rooftop. If the inspector cannot access the roof, no warranty can be issued.
- Always refer to Versico's field guide or mobile app for field-fabricated details, coverage rates, bead spacing, etc.

Insulation

- Make sure there are no gaps greater than 1/4" between boards.
- If insulation becomes saturated during installation, it must be replaced.
- Follow the fastening patterns recommended by the insulation manufacturer.

Membrane

- Check for angle change securement; slopes exceeding 2":12" require securement.
- Membrane attachment must be installed at all perimeters of each roof level as well as curbs, skylights, tie-ins, expansion joints, pipes with diameters exceeding 18", and all inside deck angle changes greater than 2":12".
- On mechanically attached systems, all penetrations require securement, regardless of size.

Field Seams

- EPDM seam widths depend on the type of membrane used and the length of warranty required.
 - Adhesive seams on adhered or ballasted systems must be a minimum of 3" wide.
 - Mechanically attached field seams that utilize seam fastening plates must be a minimum of 6" wide.
- There must be no wrinkles or fish-mouths in the seam areas.
- Make sure all TPO and PVC seams are probed prior to inspection to ensure that there are no false or cold welds.

Flashing

- Ensure that all penetrations, curbs, scuppers, and drains are flashed in accordance with Versico details. Details can be found in the appropriate Versico field guide or on the Versico mobile app.
- Check the following areas for appropriate Water Cut-Off Mastic coverage:
 - EPDM: under Termination Bar, Pipe Boots (VGC-8.0), and scuppers
 - TPO and PVC: under Termination Bar and all pipe penetrations

Tip: Remember to apply the appropriate termination material and securement to provide constant compression for the Water Cut-Off Mastic.

Penetration Pockets

- On adhered and ballasted systems, penetration pockets greater than 12" on any side require membrane attachment.

- On mechanically attached systems, all penetration pockets require membrane attachment, regardless of size.
- Make sure penetration pockets are completely filled to a minimum depth of 2" with Pourable Sealer.

Drains

- All bolts and clamps must be tightened in place.
- Water Cut-Off Mastic must be used.
- Compression drain ring components must be intact.

Pipe Flashings

- On adhered and ballasted systems, membrane attachment is required around all pipes greater than 18" in diameter.
- On mechanically attached systems, all pipes, regardless of size, require membrane attachment.
- On field-fabricated pipe flashings, ensure that there is no seam separation (bridging) at angle changes.
- In cool temperatures, warm the flashing material with a heat gun.

Corners

- Check all outside corners for bridging 24 hours after installation. Major causes of bridging include:
 - Uncured flashing applied with wet primer at angle changes
 - Failure to use a heat gun when required

Roofer's Bucket for Inspections

Did you know that during roof inspections, contractors are allowed to make on-the-spot repairs? Versico recommends that contractors have a "roofer's bucket" handy at inspections, in case repairs are necessary. Below are suggestions for materials you should have in your bucket.

Roofer's Bucket for EPDM Projects

- Weathered Membrane Cleaner
- Splice wipes
- Primer
- Quick-Applied Uncured Flashing
- Quick-Applied Cured Cover Strip
- 2" steel or silicone hand roller
- Scissors
- Lap Sealant
- Caulk gun

Roofer's Bucket for TPO Projects

- Weathered Membrane Cleaner
- Splice Wipes
- Scotch-Brite™ pads
- Small roll of non-reinforced TPO Flashing
- Scrap piece of reinforced TPO membrane (must match thickness of roof membrane)
- Heat welder
- 2" silicone roller
- TPO Cut-Edge Sealant

Roofer's Bucket for PVC Projects

- PVC Membrane Cleaner
- Splice wipes
- Scotch-Brite pads
- Small roll of non-reinforced PVC flashing
- Scrap piece of PVC membrane (must match thickness of roof membrane)
- Heat welder
- 2" silicone roller
- PVC Cut-Edge Sealant

Additional Training Dates Have Been Added in Some Locations

VersiGard® EPDM, VersiWeld® TPO, and VersiFlex™ PVC Seminars - Wylie, TX

October 4–6, 2016

VersiGard EPDM, VersiWeld TPO, and VersiFlex PVC Seminars - Montgomery, NY

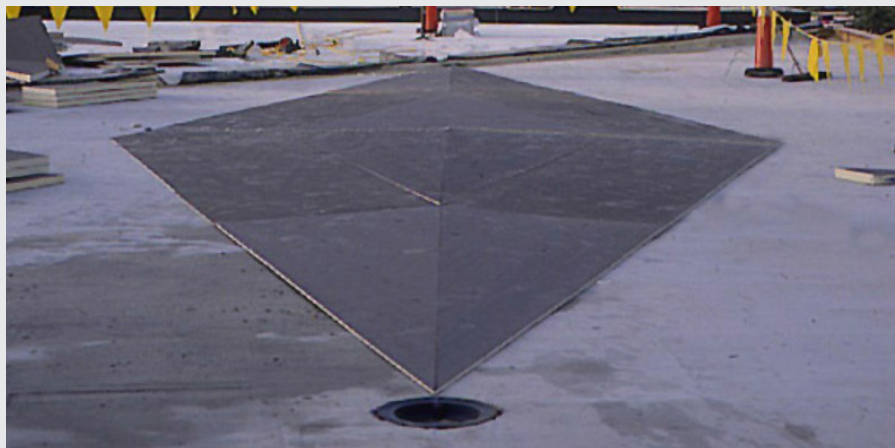
December 6–8, 2016

VersiGard EPDM, VersiWeld TPO, and VersiFlex PVC Seminars - Kennesaw, GA

October 11–13, 2016

December 6–8, 2016

Cricket Design Guidelines for Tapered Polyiso



Many specifications are written requiring different cricket design criteria. This advice is not intended to supersede or contradict any specification detailing cricket design, but rather to offer a recommendation when no direction is provided.

Cricket is a secondary application of insulation used primarily to divert water from a valley. Crickets are typically installed over tapered insulation systems and sloped decks with flat insulation.

The wider the cricket, the more efficiently it will work. The general rule is for the width of a full diamond cricket to be between $\frac{1}{3}$ and

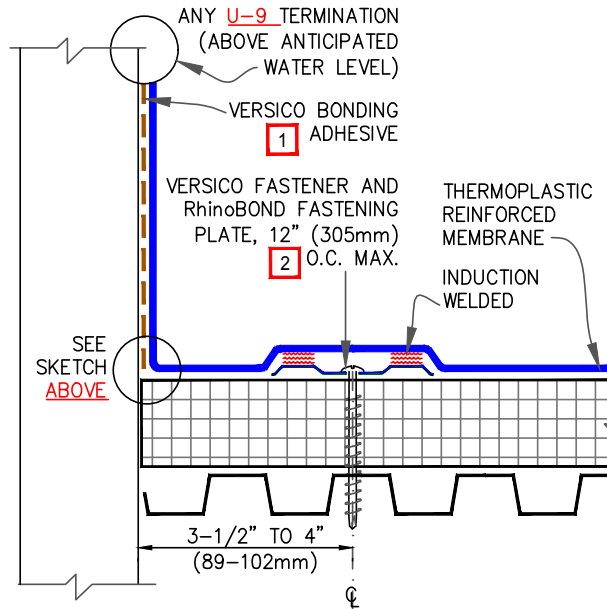
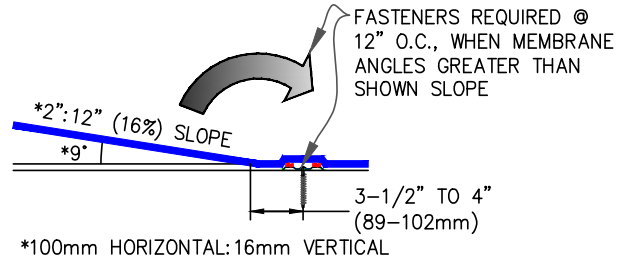
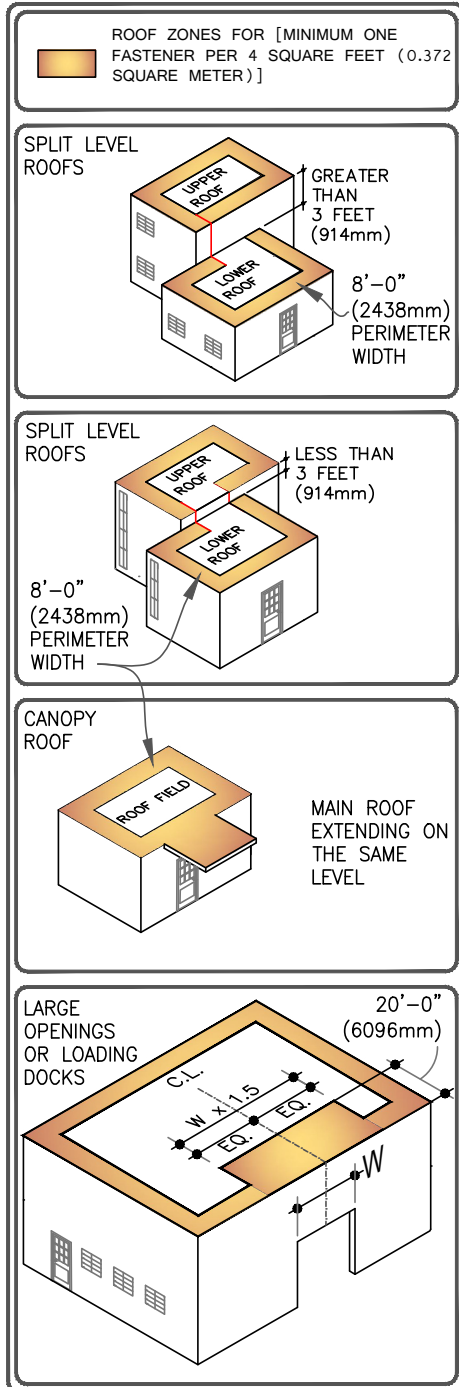
$\frac{1}{4}$ of its total length (see PIMA Technical Bulletin 108). Typically, the cricket slope is double the primary slope. This means that if the deck is sloped at $\frac{1}{4}$ " per foot, the cricket's slope will be $\frac{1}{2}$ " per foot.

Where the crickets are not in a valley, but may be up the slope (example: drains are 8' off a parapet wall, and the deck slopes past the drains to the parapet), the crickets need to be double the deck slope in order to provide positive slope back to the drains. If this is not achieved, you will essentially flatten out the deck slope and create an 8'-wide area that will pond water.

Featured Detail - RB-2

THERMOPLASTIC MEMBRANES

RhinoBond



ANGLE CHANGE SECUREMENT

NOTES:

1. VersiWELD MEMBRANE REQUIRES VersiWELD BONDING ADHESIVE AND VersiFLEX MEMBRANE REQUIRES VersiFLEX BONDING ADHESIVE.
2. HPVX FASTENERS AND RhinoBOND PLATES ARE REQUIRED OVER STEEL AND WOOD DECKS.

REVISED: DECEMBER 02, 2015



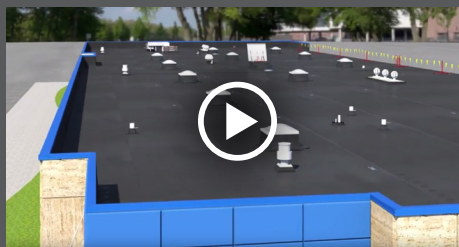
RhinoBond ATTACHMENT METHOD-NUMBER OF FASTENERS AND LOCATION

VERSICO
RhinoBond

RB-2

Featured 3-D Details

This issue's featured detail isn't a detail at all. Go figure! Offered as a supplement to Versico's new inspection checklists, this featured animation showcases the progression of a Field Service Representative's inspection process. This is a great reference tool for contractors to use when preparing for an inspection. And as always, make sure to bring those repair buckets to every inspection.



Protecting Yourself from Heat Illness

When working in the summer heat, you must always be on the lookout for signs of heat-related illness. Here are some heat illness facts and prevention tips from OSHA to help contractors work safely in the summertime. For more safety tips and full OSHA guidelines for working in the heat, visit www.osha.gov.

Risk factors for heat illness

- High temperature and humidity, direct sun exposure, no breeze or wind
- Low liquid intake
- Heavy physical labor
- Waterproof clothing
- No recent exposure to hot workplaces

If someone on your crew has symptoms

- Tell the supervisor right away and ask for medical help
- Move the person to the shade to cool off
- Keep the person cool: cool the skin with a wet cloth or a spray mist
- Loosen the person's clothing
- Have the person drink cool water slowly (only if he or she is conscious and not vomiting)
- Do not leave the person alone

How you can protect yourself and others

- Know the signs and symptoms of heat illnesses: monitor yourself and use a buddy system
- Block out direct sun and other heat sources when possible
- Drink plenty of fluids BEFORE you get thirsty, and drink often (every 15 minutes)
- Wear lightweight, light-colored, loose-fitting clothes