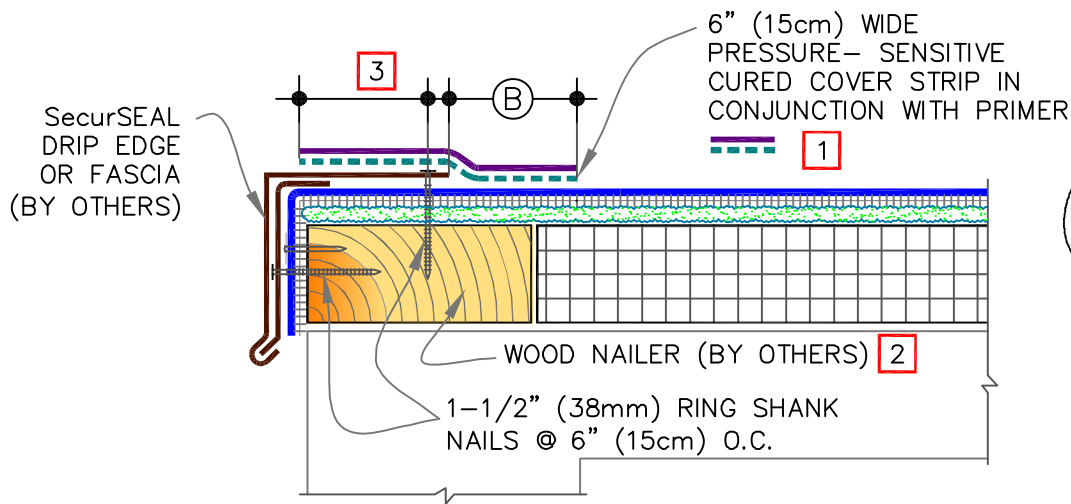


CAUTION

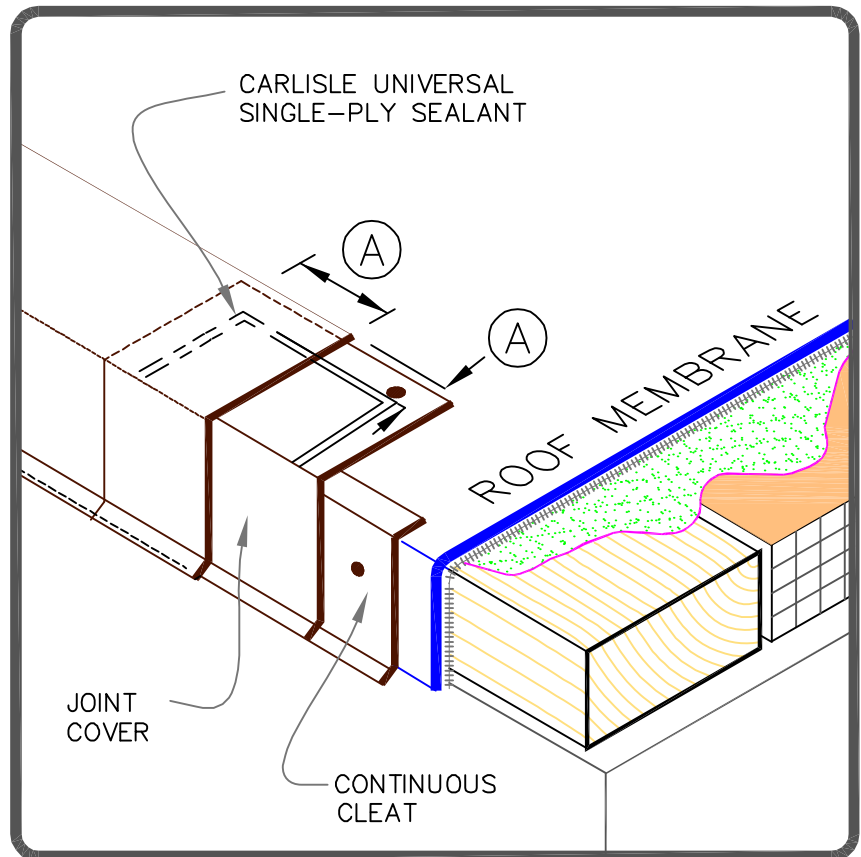
DETAIL NOT FOR USE ON 25 & 30-YEAR WARRANTY PROJECTS. ACCEPTABLE EDGING SHALL CONFORM WITH THERMOSET DETAIL [U-1A.1](#) WHEN USING EPDM MEMBRANE OR [FB-1B](#) WITH TPO MEMBRANE.



DIMENSIONS		cm	
(A)	1/2"	1.5	TO
	1"	2.5	
(B)	2"	5	MIN.

NOTES:

1. USE APPROPRIATE COVER STRIP & PRIMER BASED UPON MEMBRANE TYPE. FOR EPDM, REFER TO THERMOSET [U-1A](#). FOR TPO, REFER TO THERMOPLASTIC [U-1A](#).
2. WOOD NAILER MUST EXTEND PAST TOTAL WIDTH OF METAL FASCIA DECK FLANGE.
3. METAL FASCIA DECK FLANGE MUST BE TOTALLY COVERED BY PRESSURE-SENSITIVE COVER STRIP WITH MINIMUM 2" (5cm) COVERAGE PAST NAIL HEADS.
4. TO REMOVE FINISHING OILS, SCRUB METAL FLANGE WITH WEATHERED MEMBRANE CLEANER; ALLOW TO DRY PRIOR TO APPLYING PRIMER.
5. APPLY PRIMER TO METAL FLANGE AND MEMBRANE SURFACE PRIOR TO INSTALLING PRESSURE-SENSITIVE FLASHING.
6. WHEN METAL FASCIA BY OTHERS IS USED, FASTENER TYPE AND FASTENING FREQUENCY SHALL BE RECOMMENDED BY METAL EDGE MANUFACTURER.



	— FleeceBACK MEMBRANE
	— APPROVED ADHESIVE
	— APPROVED SUBSTRATE
	— SEE NOTE(S)

SecurSEAL DRIP EDGE FASCIA

MAXIMUM WARRANTY: 20 YEARS



DETAIL NO.

FB-1A

FLEECEBACK ADHERED