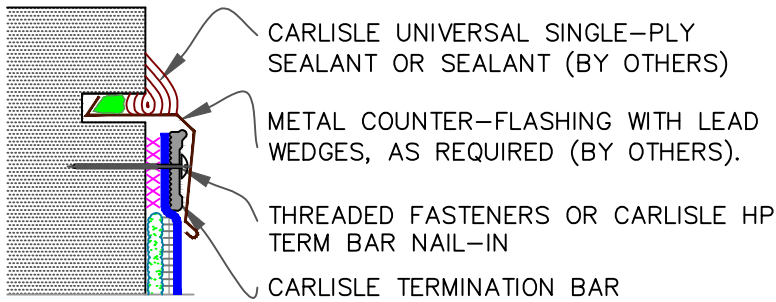
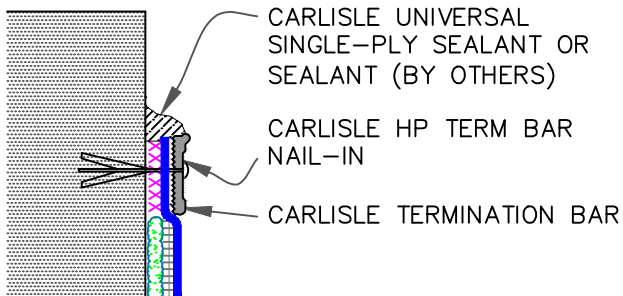


9A

MECHANICAL TERMINATION WITH  
COUNTER FLASHING**WARRANTY  
UP TO 30 YEARS****SEE INSET  
A**

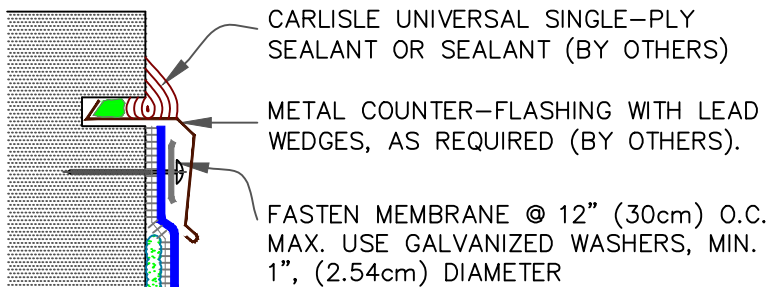
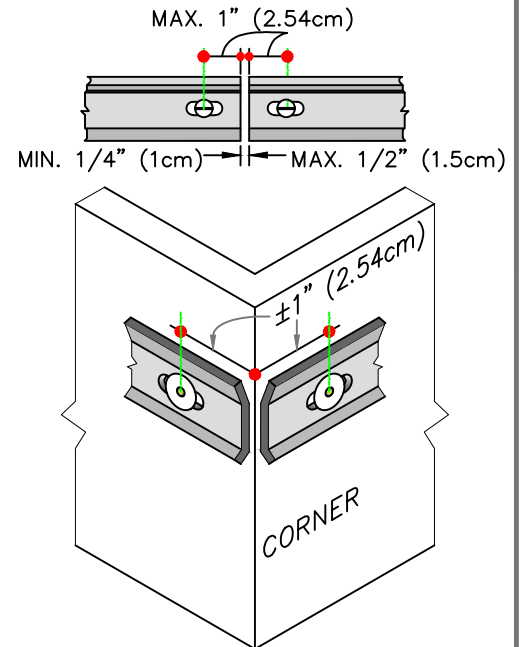
9B

## MECHANICAL TERMINATION

**WARRANTY  
UP TO 20 YEARS****SEE INSET  
A**

9C

## COUNTER FLASHING TERMINATION

**WARRANTY  
UP TO 10 YEARS****INSET A**

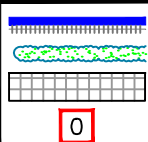
## NOTES:

1. APPLY ON HARD SMOOTH SURFACE ONLY; NOT FOR USE ON EXPOSED WOOD.
2. DO NOT WRAP TERMINATION BAR AROUND CORNERS.
3. DETAIL 9D ON PAGE 2 OF 3 MUST BE USED AT VERTICAL JOINTS IN PANEL WALLS.

## NOTE:

1. WHEN MECHANICAL FASTENERS ARE USED TO PENETRATE THE METAL COUNTER-FLASHING, USE EPDM WASHERS, APPLY WATER CUT-OFF MASTIC UNDER THE COUNTER-FLASHING OR CAULK THE FASTENER HEADS.

xxx

WATER CUT-OFF MASTIC- MUST BE  
HELD UNDER CONSTANT COMPRESSION.

- FleeceBACK MEMBRANE
- APPROVED ADHESIVE
- APPROVED SUBSTRATE
- SEE NOTE(S)

MEMBRANE TERMINATIONS  
(PAGE 1 OF 3)

WARRANTY AS NOTES FOR EACH DETAIL



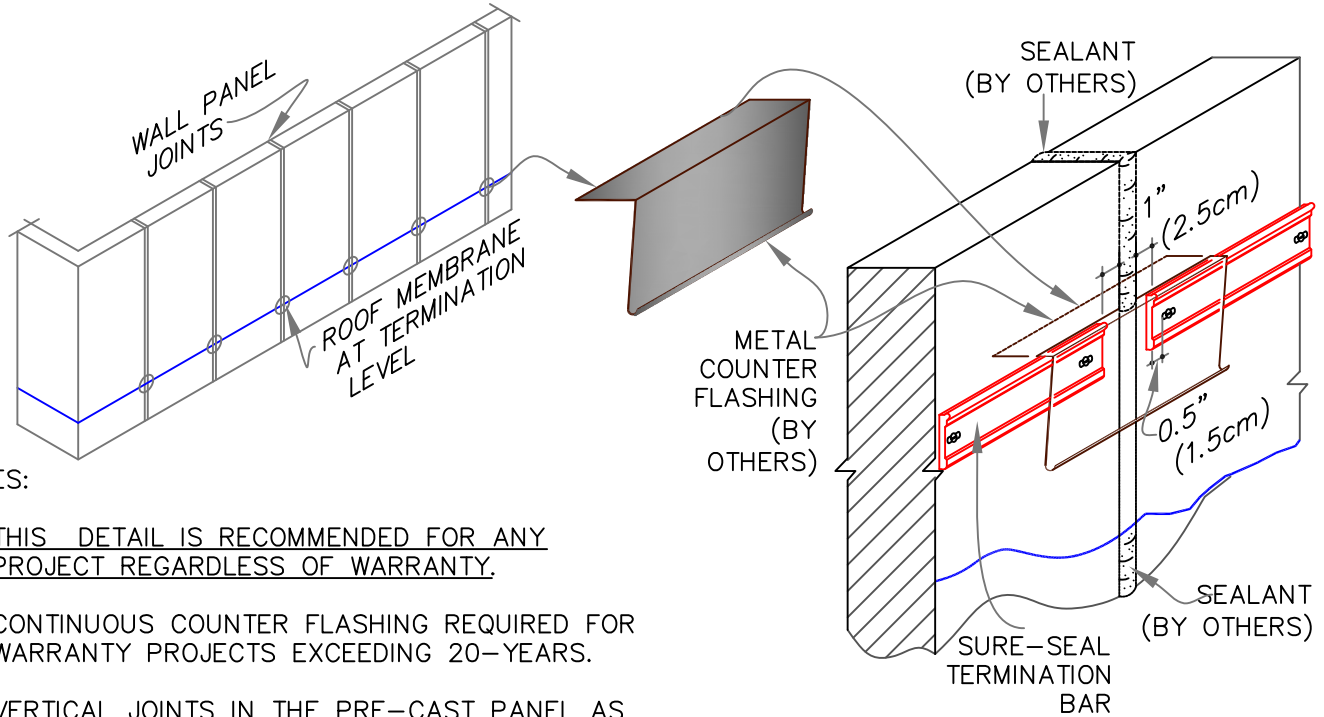
DETAIL NO.

FB-9

FLEECEBACK ADHERED

9D

## MECHANICAL TERMINATION AT VERTICAL JOINTS



## NOTES:

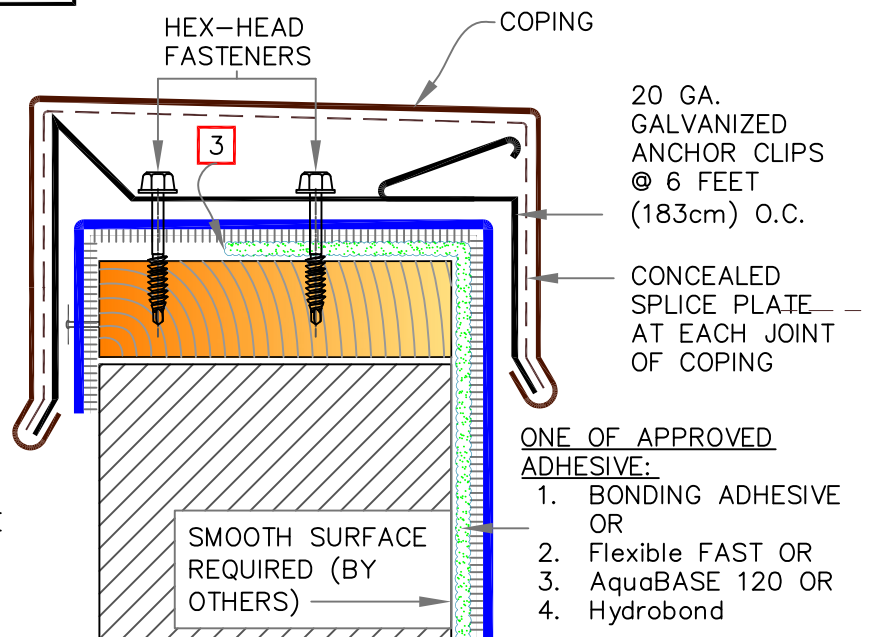
1. THIS DETAIL IS RECOMMENDED FOR ANY PROJECT REGARDLESS OF WARRANTY.
2. CONTINUOUS COUNTER FLASHING REQUIRED FOR WARRANTY PROJECTS EXCEEDING 20-YEARS.
3. VERTICAL JOINTS IN THE PRE-CAST PANEL AS WELL AS ALL GAPS AT THE JUNCTION OF THE TILT-UP PANEL AND ROOF DECK MUST BE FULLY SEALED TO PREVENT AIR INFILTRATION.
4. APPLY ON HARD SMOOTH SURFACE ONLY.

9E

## SecurEdge 200 &amp; 300 COPINGS

## NOTES:

1. MEMBRANE MUST BE EXTENDED AT CORNERS TO PROVIDE COMPLETE COVERAGE OF THE TOP WALL SURFACE. SEE [3D DETAIL 9F](#) ON [PAGE 3 OF 3](#).
2. REFER TO [SecurEdge COPING INSTALLATION INSTRUCTION](#) MANUAL FOR STEP-BY-STEP INSTRUCTION PROCEDURES.
3. STOP ADHESIVE AT APPROPRIATE DISTANCE TO AVOID STAINING ON EXTERIOR FACE OF WALL. EXTEND THE MEMBRANE DOWN & TEMPORARILY SECURE WITH CAPPED NAILS AT 12" (30.5cm) O.C. ENSURE SEAMS ARE SEALED.



|  |                       |
|--|-----------------------|
|  | — FleeceBACK MEMBRANE |
|  | — APPROVED ADHESIVE   |
|  | — APPROVED SUBSTRATE  |
|  | — SEE NOTE(S)         |

MEMBRANE TERMINATIONS  
(PAGE 2 OF 3)

WARRANTY AS NOTES FOR EACH DETAIL



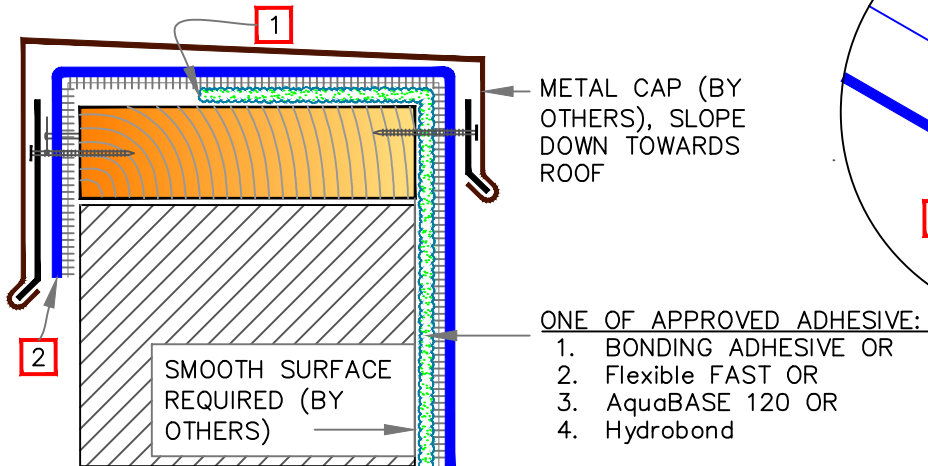
DETAIL NO.

FB-9

FLEECEBACK ADHERED

9F

## SHEET METAL COPING (BY OTHERS)

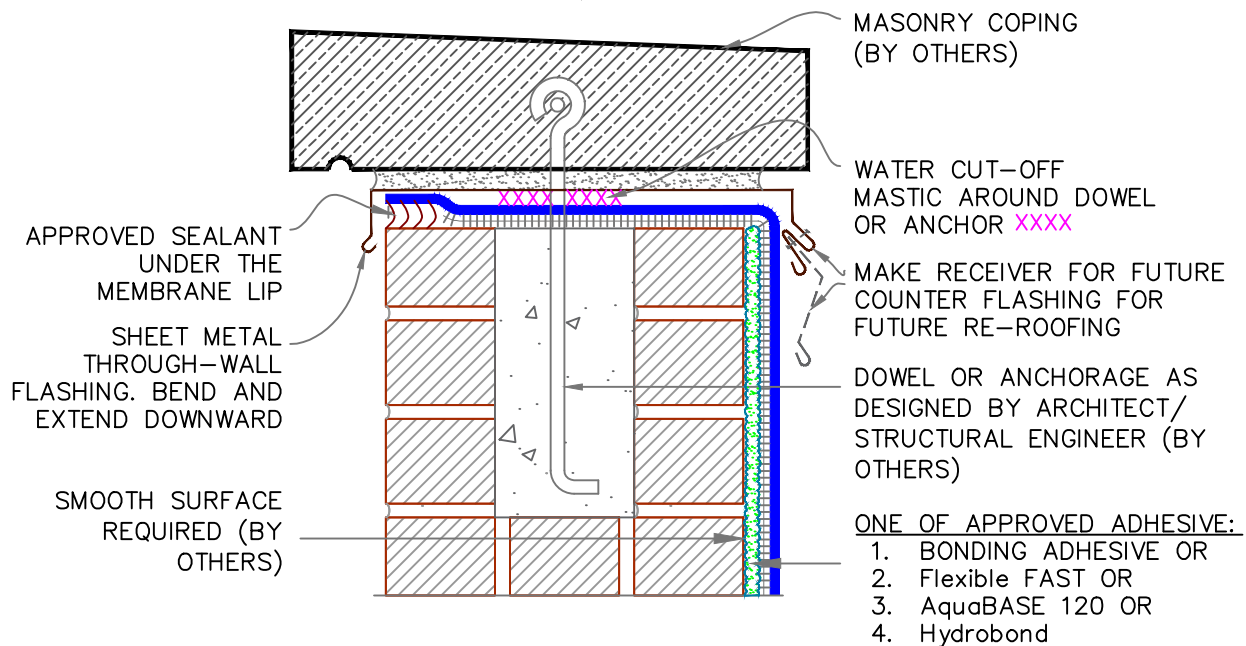


## NOTES:

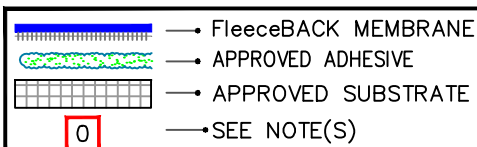
1. STOP ADHESIVE AT APPROPRIATE DISTANCE TO AVOID STAINING ON EXTERIOR FACE OF WALL. EXTEND THE MEMBRANE DOWN & SECURE WITH CAPPED NAILS AT 12" (30.5cm) O.C. ENSURE SEAMS ARE SEALED.
2. EXTEND THE MEMBRANE BELOW THE JOINT. AT CORNERS, MEMBRANE MUST BE EXTENDED TO PROVIDE COMPLETE COVERAGE OF WALL SURFACE.

9G

## MASONRY COPINGS (BY OTHERS)



XXXX WATER CUT-OFF MASTIC- MUST BE HELD UNDER CONSTANT COMPRESSION.

MEMBRANE TERMINATIONS  
(PAGE 3 OF 3)

MAXIMUM WARRANTY: 30 YEARS



DETAIL NO.

FB-9

FLEECEBACK ADHERED