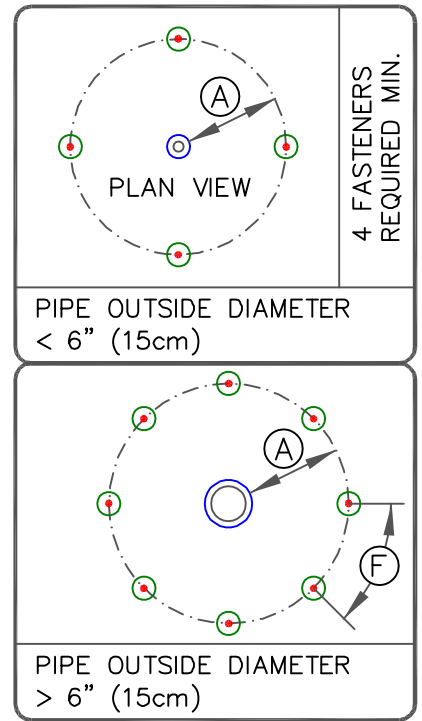


NOTES:

1. REMOVE ALL LEAD AND OTHER FLASHING BEFORE INSTALLING QA UNCURED EPDM FLASHING.
2. HPV FASTENERS AND POLYMER SEAM PLATES ARE REQUIRED OVER STEEL DECKS.
3. FOR STRUCTURAL STEEL TUBING GREATER THAN 12" ACROSS USE VGC-5 DETAILS.



MAXIMUM WARRANTY: SEE EACH DETAIL



FIELD FABRICATED PIPE WRAP

- EPDM MEMBRANE
- APPROVED SUBSTRATE
- SEE NOTE(S)

VersiGard MECHANICALLY ATTACHED (EPDM)

VGMA-8.2