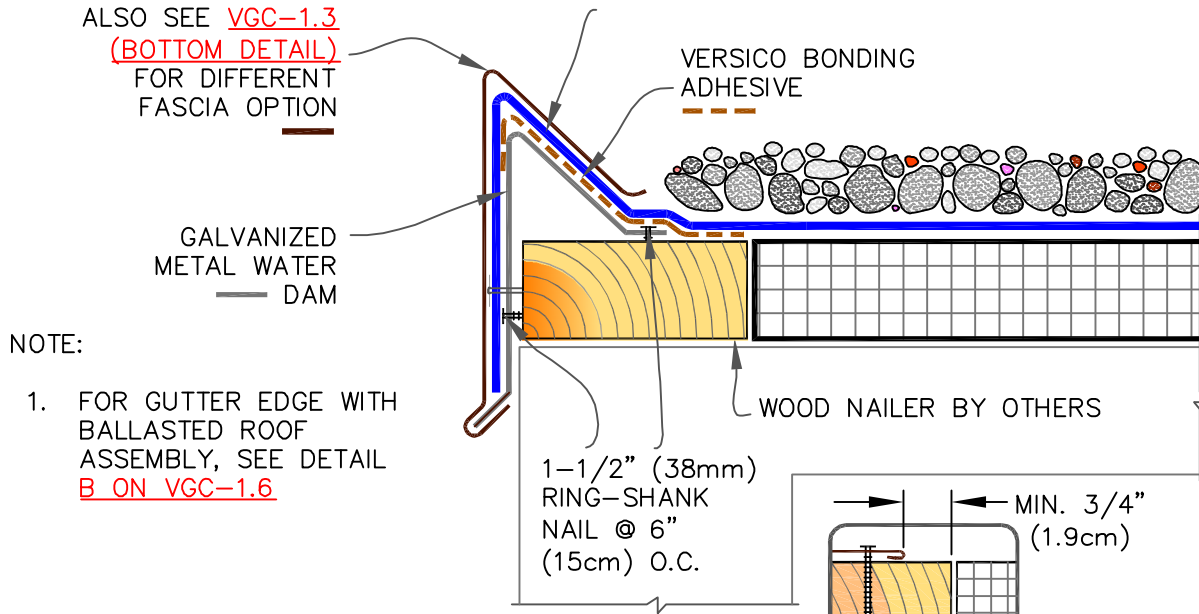


VERSITRIM
SNAP-ON CANTED
FASCIA OR METAL
FASCIA BY OTHERS.
ALSO SEE [VGC-1.3](#)
(BOTTOM DETAIL)
FOR DIFFERENT
FASCIA OPTION

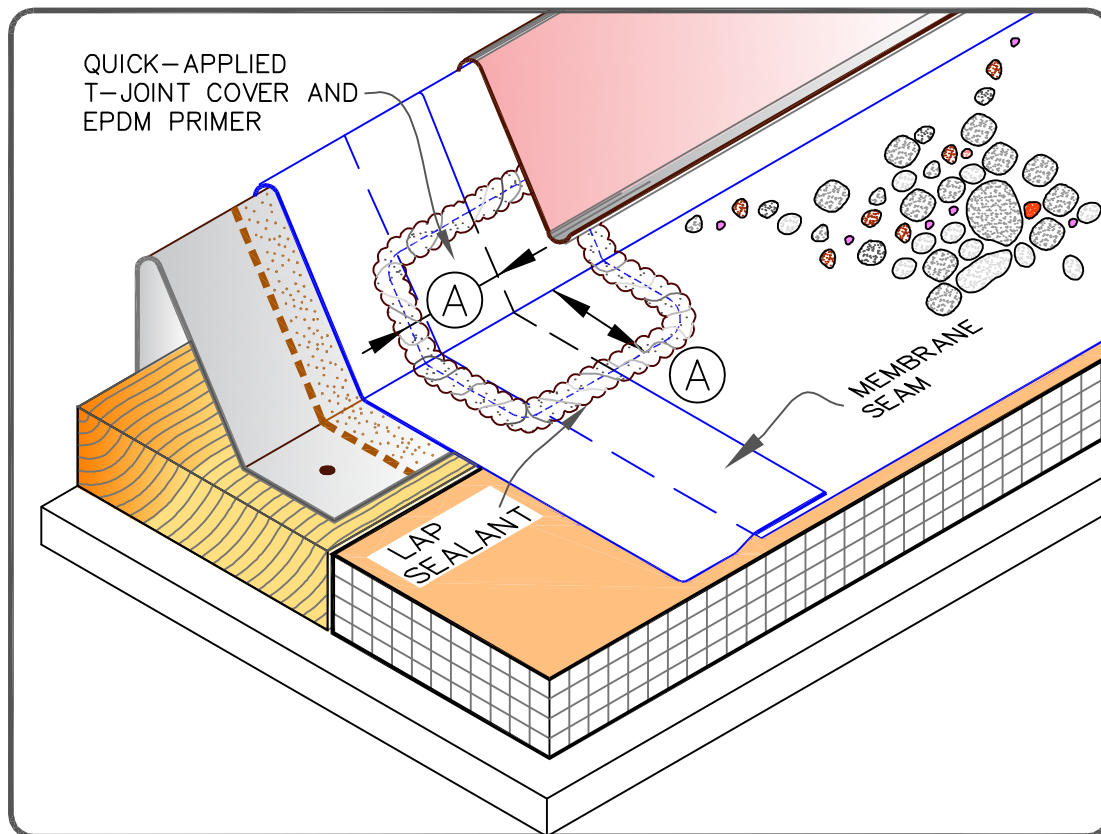
MAXIMUM MEMBRANE THICKNESS GOING OVER THE
WATER DAM IS 60-MIL. FOR THICKER MEMBRANES,
RUN FIELD SHEET UNDER THE WATER DAM AND
STRIP-IN WITH MAXIMUM 60-MIL MEMBRANE



NOTE:

1. FOR GUTTER EDGE WITH
BALLASTED ROOF
ASSEMBLY, SEE DETAIL
[B ON VGC-1.6](#)

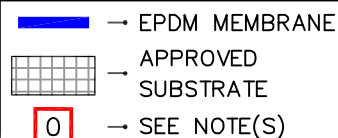
DIMENSION	cm	
(A)	3"	7.5 MIN.



MAXIMUM WARRANTY: 30 YEARS



VERSITRIM SNAP-ON
CANTED FASCIA



VersiGard BALLASTED
(EPDM)

VGB-1.1