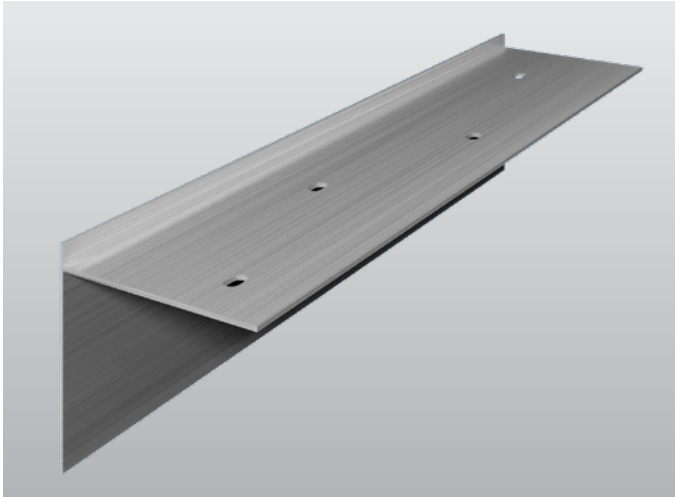


# SecurEdge™ METAL

## Eliminailer



### Overview

Carlisle's SecurEdge Eliminailer-T makes using a wood nailer obsolete. Using the Eliminailer-T, you can avoid the need to install multiple layers of 2" x 6" lumber that can be warped or inconsistent. This product can be fastened into the purlins or structural support using the pre-punched holes and eliminates the need for multiple layers of wood. It comes in a variety of face heights to accommodate up to 5.2" of insulation. The finished edge metal can be fastened directly into the Eliminailer-T and is eligible for warranties up to 120 MPH. The product is ANSI/SPRI/FM 4435/ES-1 tested and manufactured in 12' lengths.

### Features and Benefits

- » Simple and easy to install (up to 60% faster)
- » Eliminates wood blocking assemblies
- » Will not warp, crack, split, rot, or deform
- » Included in the roof system warranty (up to 30 years and 120 MPH)
- » FM and Miami-Dade approved
- » Enhanced thermal performance
- » Sustainable and non-combustible

### Installation

For complete instructions, refer to Eliminailer installation instructions at [www.carlislestec.com](http://www.carlislestec.com)

### Primary Applications

- » Standard low-slope, consistent perimeter height, non-tapered
- » Metal roof retrofits (up to a 1/2 pitch)

### Alternative Versus Wood Nailers

#### Wood Nailer Alternative Benefits

- » Warranty and performance protection with wind coverage up to a category 5 hurricane
- » FM tested up to 1-990 (Eliminailer-T) and 1-540\* (EdgeBox RI) at the perimeter rating
- » Heavy-gauge materials that will not warp, crack, split, rot, or deform
- » Continuous insulation to the roof edge (up to a 47% increase in R-value at the edge with Eliminailer-T)
- » Easy and precise installation with pre-punched holes, up to 60% faster than wood nailers
- » Non-combustible, made with recycled materials

#### Wood Nailer Comparison

- » No warranty or performance guarantee
  - » Not as structurally strong as heavy-gauge extruded aluminum
  - » Wood deteriorates from moisture, mold, insects, and more
  - » Prevents insulation from reaching the roof edge, allowing energy to escape and moisture to enter
  - » Wood can be uneven, requiring additional prep time before and during installation
  - » Combustible and serves as a food source for insects and mold
- \* Max 4.5" height and 5.5"-Width

### Eliminailer-T Options

- » 1.5" face x 2.5" flange
- » .5" face x 5.5" flange
- » 3" face x 2.5" flange
- » 3" face x 5.5" flange
- » 5.2" face x 4" flange
- » 5.2" face x 5.5" flange

# SecurEdge™ METAL

## Eliminailer

### Market Segment

Metal roof retrofits and low-slope new construction and re-roofs featuring consistent insulation height along the roof perimeter, non-tapered applications.

### Installation Features

- » Installs onto metal stud walls or existing wood nailers, if secure
- » Installs directly onto roof deck substrate for pre-cast, masonry, concrete, and metal stud walls

### Installation Advantages

- » Replaces 1 wood nailer and allows 1.5" of polyiso and ½" cover board up to 2" of polyiso
- » Replaces 2 wood nailers and allows 3" of polyiso and ½" cover board up to 3.5" of polyiso
- » Replaces 3 wood nailers and allows 5.2" of polyiso and ½" cover board up to 5.7" of polyiso

### Added Thermal Benefits

- » Up to an added R-11.4 to the edge
- » Up to an added R-20.5 to the edge
- » Up to an added R-32 to the edge

### Structural Benefits

FM Tested: 1-990 ES-1: 1200 PSF

### Warranty

30 year / 120 MPH

### Metal Retrofit Applications

- » Available inverted for regular metal retrofit applications or standard configuration for metal retrofits with added insulation, pitched up to ¼<sub>12</sub>
- » Inverted and standard configuration, non-pitched only
- » Eliminailer-T 1.5" x 2.5" on existing wood nailer/featuring SecurEdge EX Drip Edge