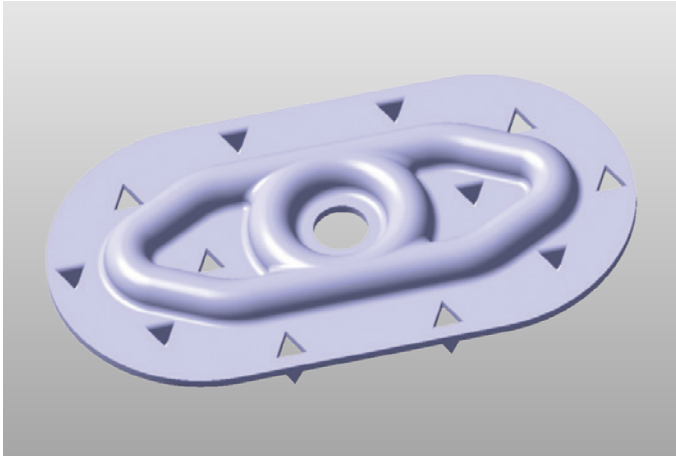


# 1.5" x 2.75" Oval Barbed Plate



## Overview

The 1.5" x 2.75" Oval Barbed Plate is for use with all VersiFlex™ PVC and KEE HP polyester-reinforced membranes. These plates are designed for use in mechanically attached PVC and KEE HP roofing systems, offering greater wind uplift resistance allowing higher wind speed approvals. In-house testing showed that the elongated edge of the oval plate better distributes the stress along the seam and improves splice delamination strength, resulting in higher wind uplift ratings.

## Features and Benefits

- 12 barbs for additional slip resistance
- 18-gauge corrosion resistant Galvalume® steel
- Pull-through strength of over 700 lbs (3.11 kN)

## Installation

Care must be taken to ensure that the longer edge of the oval plate is positioned parallel to the edge of the membrane, approximately three quarters of an inch (¾") from the edge. The plate must be secured to the deck by installing Versico HPVX fasteners through the center hole with a standard clutch drive electric screw gun (0-2500 rpm). Use care to avoid over-driving the fastener during installation. Optimum fastener and plate performance is achieved when the fastener is installed perpendicular to the deck and into the top flutes of a steel deck. The oval plate can be used with PVC or KEE HP polyester-reinforced membranes.

REVIEW CURRENT VERSICO SPECIFICATIONS AND DETAILS FOR SPECIFIC INSTALLATION REQUIREMENTS.

## Precautions

- Eye protection is recommended during installation.
- Use care to avoid over-torquing the fastener.

## Typical Properties and Characteristics

Part Number	319985
Application	Roof cover to roof deck (metal, wood or concrete)
Thickness	18 gauge
Hole Diameter	0.250"
Length	2.750"
Width	1.500"
Pcs/Pail	500
Pail Weight	33.75 lb (15.31 kg)
Pails/Skid	40
Pull-Through Strength	700 lb (3.11 kN) minimum
Corrosion Resistance	15/15 Kesternich, per FM 4470

Typical properties and characteristics are based on samples tested and are not guaranteed for all samples of this product. This data and information is intended as a guide and does not reflect the specification range for any particular property of this product.