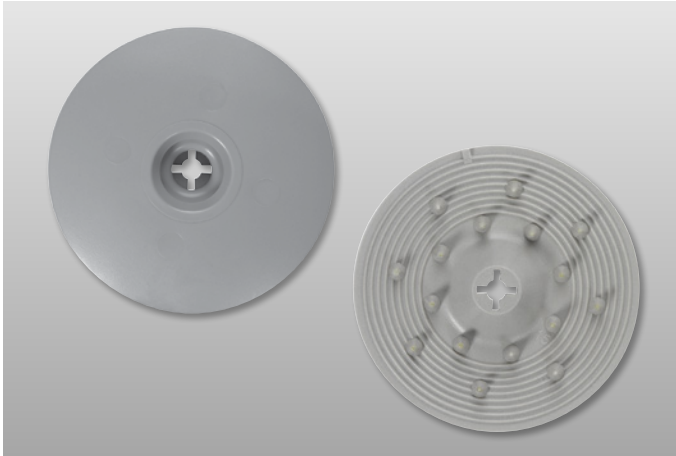


# HP-XTRA Polymer Seam Plates



## Overview

Carlisle's HP-XTRA Polymer Seam Plates are used in conjunction with HP-XTRA Fasteners for excellent back-out resistance and enhanced wind uplift ratings (Contact Carlisle for specifics regarding these ratings). The 16-barb profile on the underside of the plate reduces lateral movement when subjected to dynamic membrane loading.

## Features and Benefits

- » Incorporates an oversized-diameter hole to accommodate the larger wire size of HP-XTRA Fasteners
- » Increased slip resistance of membrane during uplift conditions
- » Enhanced wind uplift ratings
- » Locking plate prevents fastener backout
- » No special tools required

## Installation

1. Position HP-XTRA Polymer Seam Plates with barbs facing downward.
2. Secure HP-XTRA Polymer Seam Plates using HP-XTRA Fasteners. Tighten fastener until fastener head "snaps" into plate recess.

*Review Carlisle specifications and details for complete installation information.*

## Precautions

- » Eye protection is recommended during drilling and installation of fasteners.
- » Cannot be directly installed over hard surfaces such as wood, brick, concrete, concrete block, DensDeck® and SECUROCK®.
- » Use care to avoid over-torquing the fastener. Fastener must be tight enough so that the plate doesn't turn.

## Typical Properties and Characteristics

Size	2 3/8" diameter (60 mm)
Weight/carton	26 lbs (12 kg)
Quantity/carton	1,000
Pull-through resistance	985 lbs (447 kg)
Compatibility	Accepts Carlisle HP-XTRA Fasteners

Typical properties and characteristics are based on samples tested and are not guaranteed for all samples of this product. This data and information is intended as a guide and does not reflect the specification range for any particular property of this product.