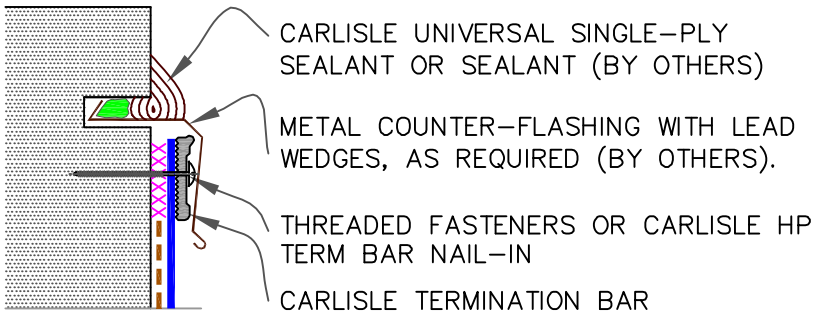


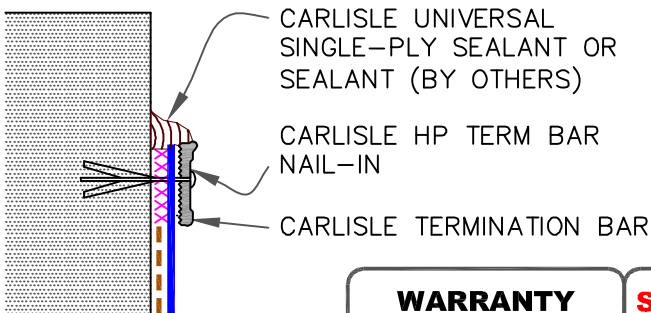
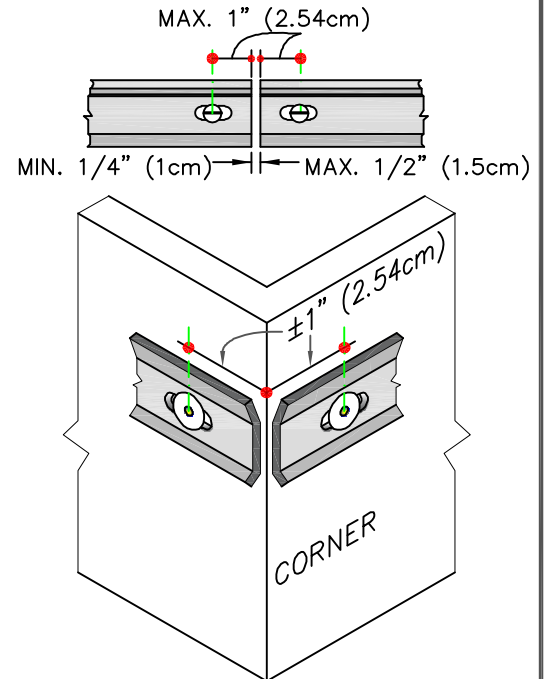
9A

MECHANICAL TERMINATION WITH COUNTER FLASHING

**WARRANTY
UP TO 30 YEARS****SEE INSET
A**

9B

MECHANICAL TERMINATION

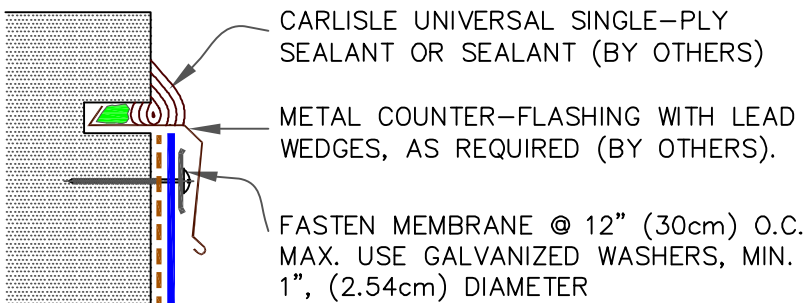
**WARRANTY
UP TO 20 YEARS****SEE INSET
A****INSET A**

NOTES:

1. APPLY ON HARD SMOOTH SURFACE ONLY; NOT FOR USE ON EXPOSED WOOD.
2. DO NOT WRAP TERMINATION BAR AROUND CORNERS.
3. DETAIL **9D** MUST BE USED AT VERTICAL JOINTS IN PANEL WALLS.

9C

COUNTER FLASHING TERMINATION



NOTE:

1. WHEN MECHANICAL FASTENERS ARE USED TO PENETRATE THE METAL COUNTER-FLASHING, USE EPDM WASHERS, APPLY WATER CUT-OFF MASTIC UNDER THE COUNTER-FLASHING OR CAULK THE FASTENER HEADS.

**WARRANTY
UP TO 10 YEARS**

--- APPLICABLE BONDING ADHESIVE

xxx WATER CUT-OFF MASTIC- MUST BE HELD UNDER CONSTANT COMPRESSION.

MEMBRANE TERMINATIONS
(PAGE 1 OF 3)

WARRANTY AS NOTES FOR EACH DETAIL



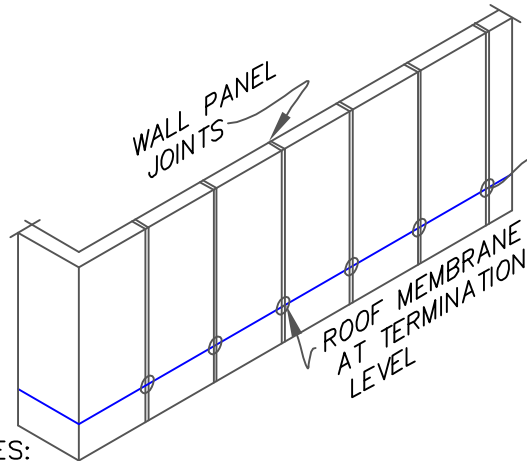
DETAIL NO.

U-9

U (UNIVERSAL DETAIL)

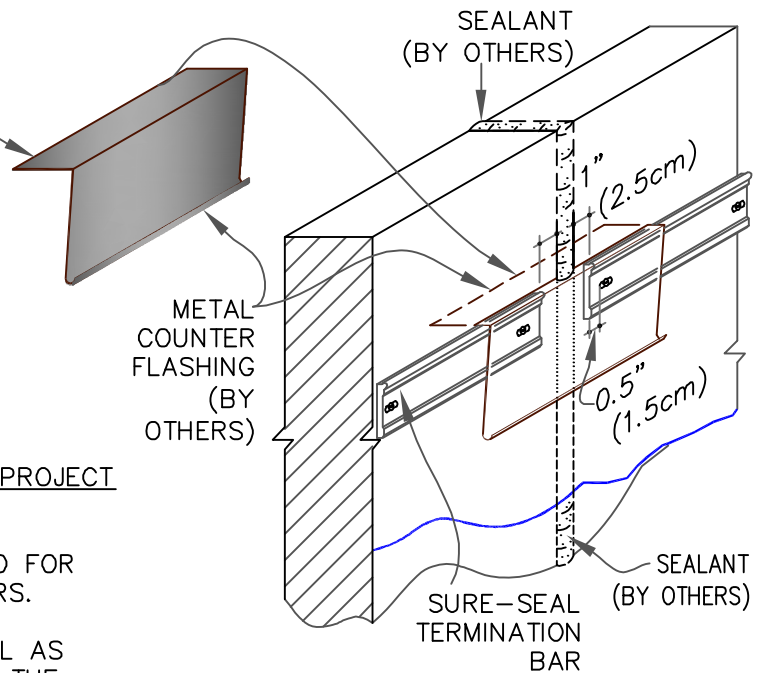
9D

MECHANICAL TERMINATION AT VERTICAL JOINTS



NOTES:

1. THIS DETAIL IS RECOMMENDED FOR ANY PROJECT REGARDLESS OF WARRANTY.
2. CONTINUOUS COUNTER FLASHING REQUIRED FOR WARRANTY PROJECTS EXCEEDING 20-YEARS.
3. VERTICAL JOINTS IN THE PRE-CAST PANEL AS WELL AS ALL GAPS AT THE JUNCTION OF THE TILT-UP PANEL AND ROOF DECK MUST BE FULLY SEALED TO PREVENT AIR INFILTRATION.
4. APPLY ON HARD SMOOTH SURFACE ONLY.

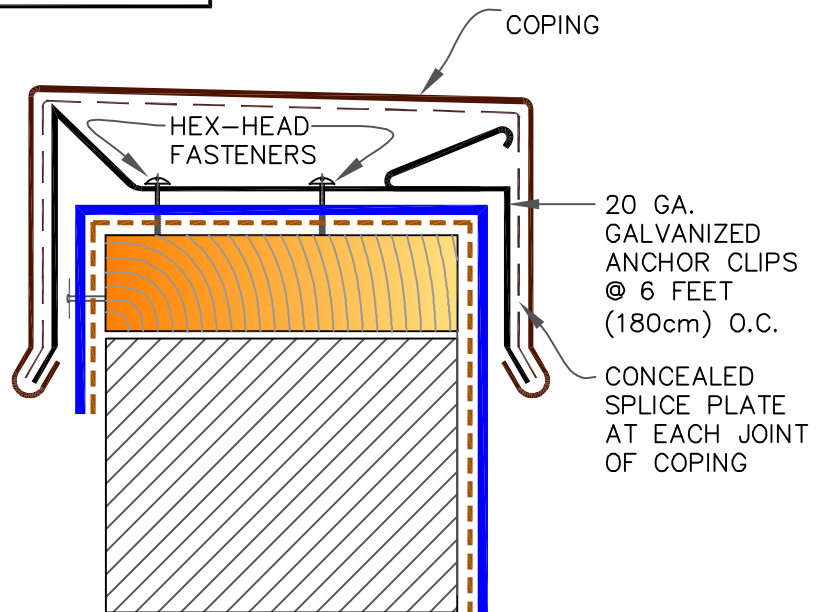


9E

SecurEdge & SecurEdge 300 COPINGS

NOTES:

1. MEMBRANE MUST BE EXTENDED AT CORNERS TO PROVIDE COMPLETE COVERAGE OF THE TOP WALL SURFACE. REFER TO [3D DETAIL ON DETAIL U-9F](#).
2. REFER TO [SecurEdge COPING INSTALLATION INSTRUCTION](#) MANUAL FOR STEP-BY-STEP INSTRUCTION PROCEDURES.



MAXIMUM WARRANTY: 30 YEARS

--- APPLICABLE BONDING ADHESIVE

xxx WATER CUT-OFF MASTIC- MUST BE HELD UNDER CONSTANT COMPRESSION.

MEMBRANE TERMINATIONS
(PAGE 2 OF 3)

WARRANTY AS NOTES FOR EACH DETAIL



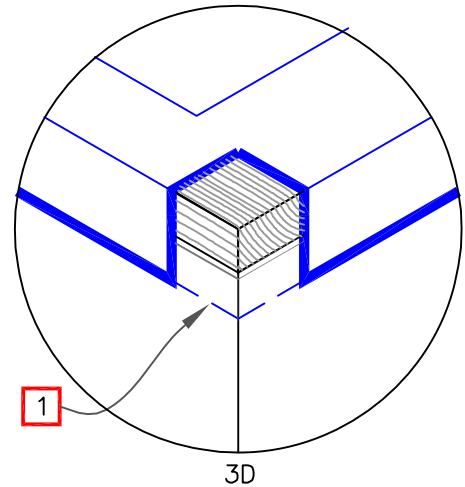
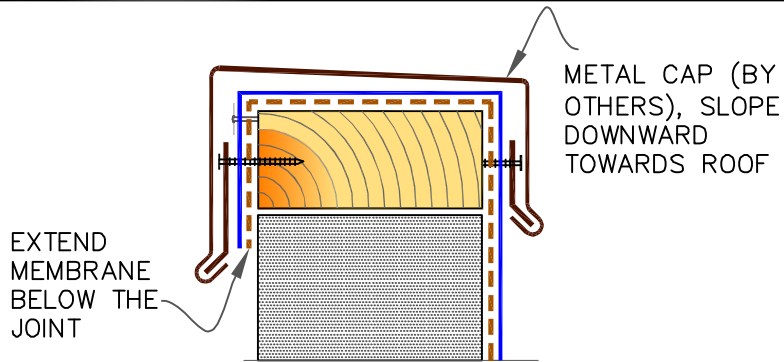
DETAIL NO.

U-9

U (UNIVERSAL DETAIL)

9F

SHEET METAL COPING (BY OTHERS)

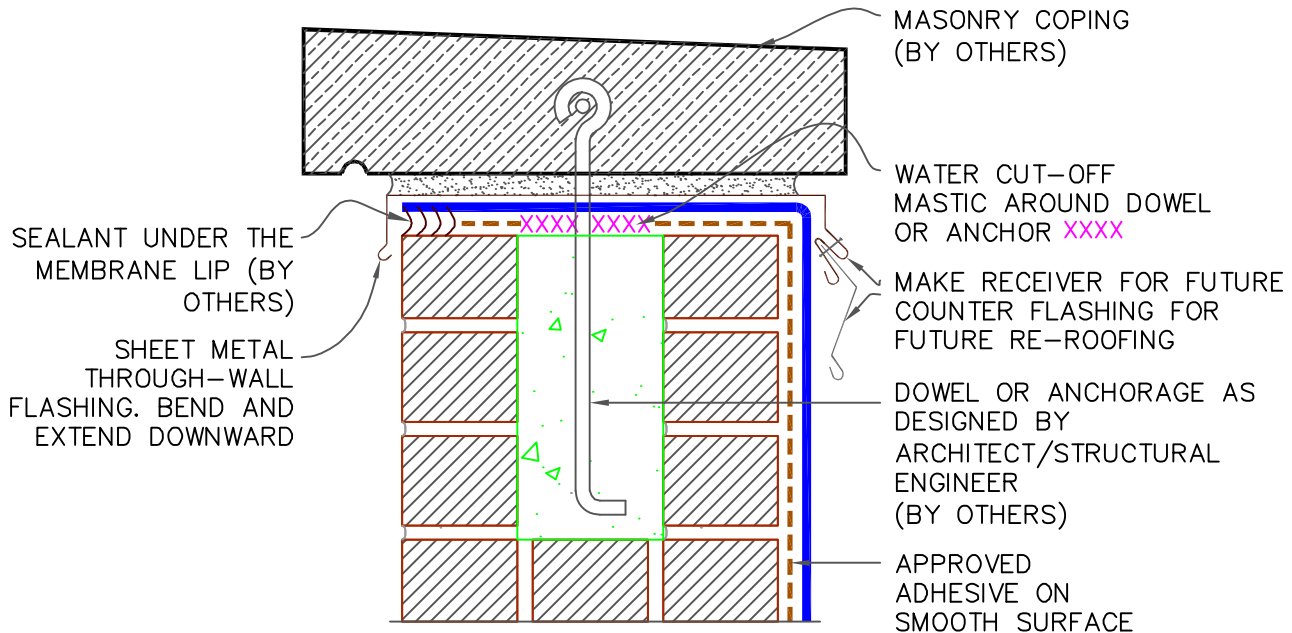


NOTES:

1. MEMBRANE MUST BE EXTENDED TO CORNERS TO PROVIDE COMPLETE COVERAGE OF THE TOP WALL SURFACE.
2. WARRANTY AS PROVIDED (BY OTHERS).

9G

MASONRY COPINGS (BY OTHERS)



MAXIMUM WARRANTY: 30 YEARS

--- APPLICABLE BONDING ADHESIVE

xxx WATER CUT-OFF MASTIC- MUST BE HELD UNDER CONSTANT COMPRESSION.

MEMBRANE TERMINATIONS
(PAGE 3 OF 3)

MAXIMUM WARRANTY: 30 YEARS



DETAIL NO.

U-9

U (UNIVERSAL DETAIL)