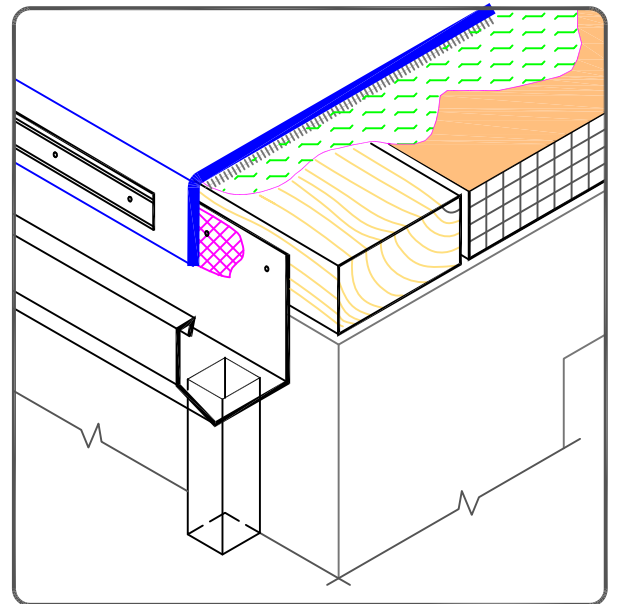


NOTES:

1. POSITION MEMBRANE WITH SELVAGE EDGE AT TERMINATION BAR LOCATION TO AVOID REMOVAL OF FLEECE BACKING.
2. FASTENING OF METAL TERMINATION BAR MUST PROVIDE CONSTANT COMPRESSION ON WATER CUT-OFF MASTIC.
3. ALLOW MEMBRANE SHEET TO EXTEND 1/2" (1.5cm) MINIMUM BELOW THE METAL TERMINATION BAR.



METAL BAR EDGE TERMINATION

	→ VERSIFLEECE MEMBRANE
	→ FLEXIBLE DASH
	→ APPROVED SUBSTRATE
	→ SEE NOTE(S)

THERMOPLASTIC VERSIFLEECE ADHERED

VF-1.3A