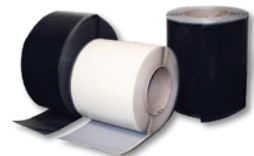


## Sure-Seal® EPDM

### Roofing System Accessories



#### Pressure-Sensitive Elastoform Flashing®

Uncured 60-mil EPDM laminated to synthetic rubber adhesive. Pressure-Sensitive Elastoform Flashing can be used to flash corners, pipes and other penetrations.

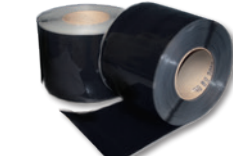
Sizes Available	Product Number	Color
6" x 100'	310443	Black
6" x 100'	310434	White
9" x 50'	303162	Black
9" x 50'	309950	White
12" x 50'	305723	Black
12" x 50'	309951	White
(White approved for TPO)		
Quantity Per Box:	2 rolls (6"), 1 roll (9" and 12")	



#### Pressure-Sensitive T-Joint Covers

Uncured EPDM laminated to a synthetic rubber adhesive. Required to overlay T-Joint intersections of splices in the field as well as at angle changes for wall flashings. An additional 12" x 12" T-Joint Cover is required for 30-Year Warranty Systems.

Sizes Available	Product Number	Color
6" x 6"	303100	Black
6" x 6"	332871	White
12" x 12"	305089	Black
(White approved for TPO)		
Quantity Per Box:	20	



#### Pressure-Sensitive Overlayment Strip

Semi-cured EPDM laminated to a synthetic rubber adhesive. It is designed for stripping in seams, all types of metal edging and Carlisle Seam Fastening Plates.

Sizes Available	Product Number	Color
6" x 100'	302319	Black
9" x 100'	302281	Black
12" x 50'	317600	Black
Quantity Per Box:	2 rolls (6"), 1 roll (9" and 12")	



#### Pressure-Sensitive Pipe Seals

Cured EPDM with a synthetic rubber adhesive. PS Pipe Seals increase the speed and ease of installation.

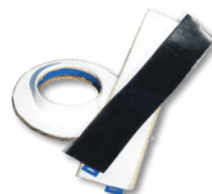
Sizes Available	Product Number	Color
½" – 3"	300204	Black
1" – 6"	309750	Black
1" – 6"	316593	White
(White approved for TPO)		
Quantity Per Box:	10	



#### 20" Pressure-Sensitive Curb Flashings

Cured 60-mil EPDM membrane pre-cut to 20" wide with PS SecurTAPE already applied. This product provides an efficient way to flash curbs and short walls.

Sizes Available	Product Number	Color
20" x 50' (with 6" PS SecurTAPE)	308705	Black
20" Pressure-Sensitive Cured Flashing:		
20" x 50'	329385	Black
20" x 50'	330913	White
(White approved for TPO)		
Quantity Per Box:	1 roll	



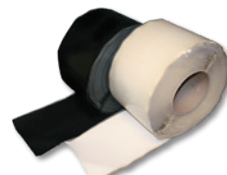
#### Pressure-Sensitive Pourable Sealer Pockets

Uncured Sure-Seal EPDM Flashing with a synthetic rubber adhesive and a 2" support strip pre-applied to the flashing. Sizes can be combined to form larger pockets when required.

Sizes Available	Product Number	Color
4" diameter	300208	Black
6" diameter	300209	Black
6" diameter	316243	White
8" diameter	300210	Black
8" diameter	332890	White
(White approved for TPO)		
Quantity Per Box:	12	

A ready reference guide for ordering EPDM Pressure-Sensitive (PS) Accessories for your next job.

Sure-White EPDM PS Accessories available for use with Carlisle's Sure-Weld TPO.



#### Pressure-Sensitive Cured Cover Strip

Cured 60-mil EPDM membrane laminated to a synthetic rubber adhesive makes this product the optimal solution to overlay seam fastening plates, stripping in metal edgings or making roof repairs.

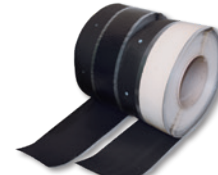
Sizes Available	Product Number	Color
6" x 100'	308701	Black
6" x 100'	308910	White
9" x 100'	308839	Black
9" x 100'	309121	White
12" x 50'	317598	Black
12" x 50'	317596	White
(White approved for TPO)		
Quantity Per Box:	2 rolls (6"), 1 roll (9" and 12")	



#### Pressure-Sensitive Inside/Outside Corners

Uncured EPDM laminated to a synthetic rubber adhesive. The pre-cut corners greatly reduce installation time and can be used for inside and outside corner installations.

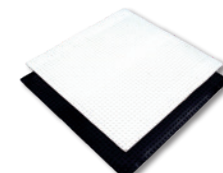
Sizes Available	Product Number	Color
7" x 9"	300199	Black
7" x 9"	310310	White
(White approved for TPO)		
Quantity Per Box:	20	



#### Pressure-Sensitive RUSS

Reinforced Universal Securement Strip RUSS combines reinforced EPDM with 3"-wide Pressure-Sensitive SecurTAPE for additional membrane securement. A 9" version with 3"-wide Pressure-Sensitive SecurTAPE on both sides permits securement of perimeter sheeting on mechanically fastened systems.

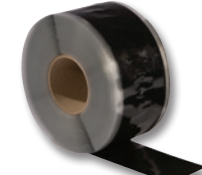
Sizes Available	Product Number	Color
6" RUSS	300490	Black
6" RUSS	309268	White
Use with all EPDM Systems (White approved for TPO)		
9" RUSS	300489	
Use with Mechanically Fastened EPDM Systems		
Quantity Per Box:	2 rolls (6"), 1 roll (9")	



#### Pressure-Sensitive Molded Walkpads

Cured EPDM with a synthetic rubber adhesive. Pressure-Sensitive Walkway Pads are designed to protect the Carlisle EPDM membrane in areas exposed to repetitive foot traffic.

Sizes Available	Product Number	Color
30" x 30"	300829	Black
30" x 30"	309589	White
(White approved for TPO)		
Quantity Per Box:	50	



#### Pressure-Sensitive SecurTAPE™

Fully cured synthetic rubber product used for splicing cured EPDM membrane in ballasted, adhered and mechanically fastened roofing systems.

Sizes Available	Product Number	Color
3" x 100'	300465	Black
3" x 100'	303260	White
6" x 100'	302952	Black
6" x 100'	317501	White
Quantity Per Box:	4 rolls (3"), 2 rolls (6")	



#### Pipe Supports

An extruded EPDM product used to support steel pipe, electrical conduit, PVC pipe, and copper tubing on Carlisle's EPDM, TPO, and PVC roofing systems.

Sizes Available	Product Number
Mini: ½" - 1½"	309403
Small: ¾" - 2"	309402
Large: 2½" - 5"	309404
Quantity Per Box:	20 (Mini and Small), 10 (Large)