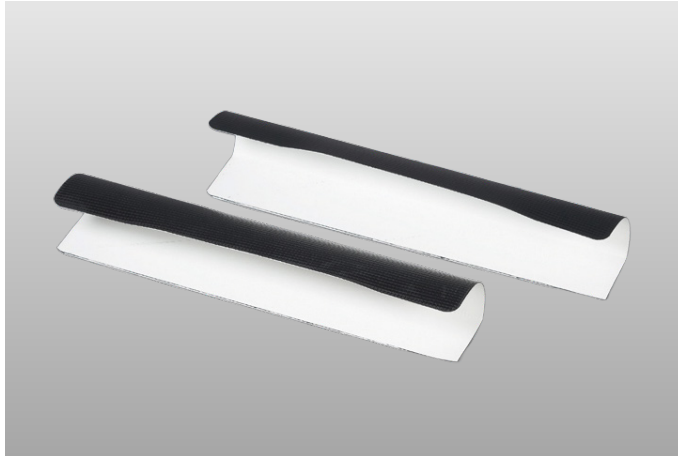


VersiWeld® TPO Pocket Extensions



Overview

Let Versico simplify your next VersiWeld TPO installation with pre-fabricated Pocket Extensions. TPO Pocket Extensions are fabricated from 60-mil-thick TPO reinforced membrane and TPO coated metal. The Pocket Extensions are used with the Prefabricated or Molded Sealant Pockets and can be used full length, cut to size for customized lengths or welded to each other for extra long applications. They are packaged 10 legs per carton and are available in white.

Versico's TPO Pocket Extensions are part of the Certified Fabricated Accessory (CFA) program. Certified Fabricated Accessories are the only factory-fabricated TPO accessories that meet the stringent quality tolerances required to be included in a Versico warranted roofing system.

Features and Benefits

- Provide a substantial labor savings compared to field fabricating odd-sized sealant pockets
- Allows extension of the standard TPO Molded or Prefabricated Sealant Pockets without the need to custom order a custom-sized pocket
- Can be cut to length to minimize sealant usage
- Provides a reliable method to waterproof odd-shaped penetrations
- Professional finished appearance

Installation

1. Clean the inside of the Pocket Extensions and TPO Sealant Pocket as well as the areas where the pocket overlaps, the underside of the pocket flange, and the deck membrane with Weathered Membrane Cleaner. Use a primer pad with the cleaner if the membrane has been exposed for an extended period of time.
2. Place the TPO Sealant Pocket and Extensions around the penetration(s), overlapping the two sections of the pocket with the Extensions. The Extensions must be positioned as follows: the 2" TPO overlap tab is placed on the topside of the pocket and the opposite end (with no welding tab) is placed on the underside of the opposing pocket.
3. Cut a piece of cardboard (approximately 4" x 4") and place it under the overlap area to be welded. The cardboard prevents the pocket and extension leg from fusing to the deck membrane when first welding the overlaps.
4. Using a hand-welder, weld the angle change in the overlap areas at each end of the extension leg. Using the end of a seam probe assists in this process. The hand-welder temperature setting should be between 5 and 6.
5. Hand-weld the remainder of the horizontal overlaps.
6. Position the TPO Sealant Pocket and Extension so the vertical overlap is against the penetration. This will allow proper pressure to be applied with the 2" silicone roller.
7. Weld all the vertical overlaps starting at the angle change and progressing to the top of the pocket.
8. Make tack-welds on all four sides of the pocket to hold it in place.
9. Weld the entire horizontal flange of the molded pocket and extension legs to the deck membrane. Crease all step-offs with the edge of the silicone roller to avoid water channeling.
10. Once the weld area is completely cool, check all splices for voids and cold-welds using a seam probe. Make any needed repairs.
11. Apply a thin coat of TPO Primer to the TPO membrane, penetration(s), and around the top rim of the pocket using a small paint brush. Do not apply TPO Primer to the galvanized metal surface on the inside of the TPO Pocket Extensions.
12. Fill the pocket with White One-Part Pourable Sealer. Use an adequate amount of sealant to ensure that contact is made with the top rim of the pocket. One set of TPO Pocket Extensions welded to a TPO Molded Sealant Pocket will require 1-gallon (3.785 liters) of sealant to fill the extended pocket.

REVIEW CURRENT VERSICO SPECIFICATIONS AND DETAILS FOR SPECIFIC INSTALLATION REQUIREMENTS.



VersiWeld TPO Pocket Extensions

Precautions

- The walls of the TPO Extensions and sealant pockets must be a minimum of one inch from any penetration.
- TPO Pocket Extensions are designed to fit both sides of the TPO Sealant Pocket without having a designated left or right part.
- Clean TPO Pocket Extensions, sealant pocket, TPO membrane and the penetration(s) prior to use with Weathered Membrane Cleaner. Primer pads must be used if the membrane has been exposed for an extended period of time. Apply TPO Primer to the TPO membrane and penetration(s) surfaces only. Do not apply TPO Primer to the galvanized metal surface utilized on the inside of the TPO Pocket Extensions.

Typical Properties and Characteristics

Property	Value
Sizes	14" (35.56 cm) overall length; 10" (25.4 cm) installed length
Packaging	10 per box
Weight (each)	6 lbs. (2.72 kg)
Material	Reinforced 60-mil TPO membrane and coated metal
Color	White

Typical properties and characteristics are based on samples tested and are not guaranteed for all samples of this product. This data and information is intended as a guide and does not reflect the specification range for any particular property of this product.

Green Building Information

Pre-consumer Recycled Content	0%
Post-Consumer Recycled Content	0%
Solar Reflectance Index (SRI)	N/A
Global Warming Potential (GWP)	N/A
Volatile Organic Compounds (VOC) Content	N/A
Manufacturing Location(s)	Eugene, OR
Corporate Sustainability Report (CSR) Availability	Yes
Environmental Product Declaration (EPD) Availability	No



A SINGLE SOURCE FOR SINGLE-PLY ROOFING

800.992.7663 • www.versico.com