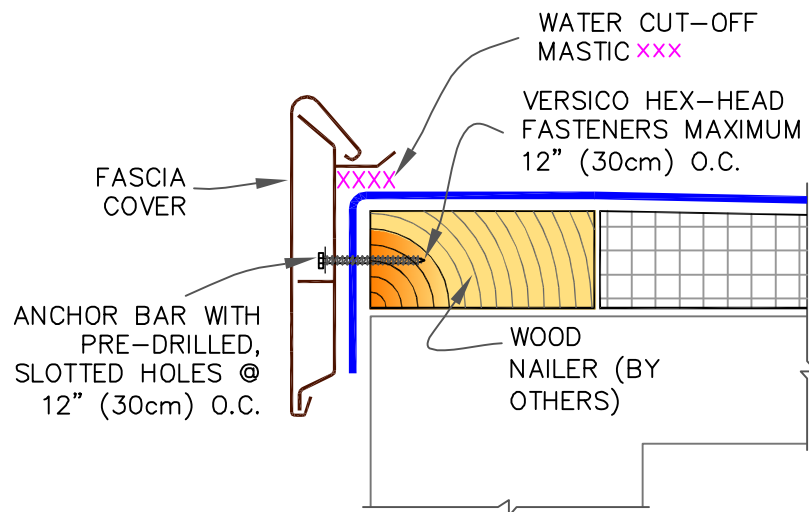
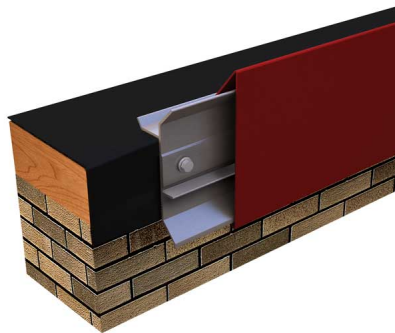


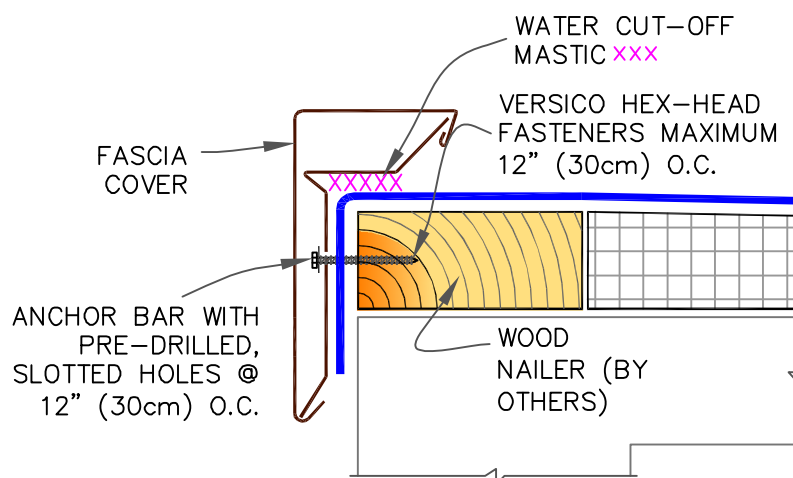
VERSITRIM 2000



NOTES:

1. REFER TO [VERSITRIM INSTALLATION INSTRUCTION MANUAL](#) FOR THE STEP BY STEP INSTALLATION PROCEDURES AND FOR THE VARIOUS PRODUCT FEATURES AVAILABLE.
2. IF INCIDENTAL/TEMPORARY PONDED WATER IS EXPECTED, THE VERSITRIM MUST BE ELEVATED AND SCUPPERS PROVIDED FOR DRAINAGE.
3. ENSURE ROOF SLOPES AWAY FROM VERSITRIM.

VERSITRIM 3000

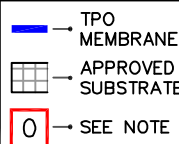


VERSITRIM ANCHOR BAR ADDITIONAL OPTION



VERSITRIM 2000 & 3000

MAXIMUM WARRANTY: 30 YEARS



PS (PRESSURE SENSITIVE)
P&S (PEEL & STICK)
QA (QUICK APPLIED)

THERMOPLASTIC ROOFING SYSTEM

TPC-1.6