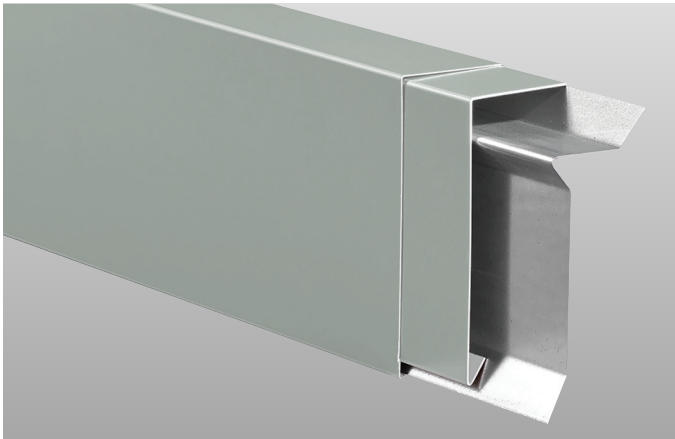


# SecurEdge™ METAL

## CF Snap-On Fascia



### Overview

Carlisle's SecurEdge CF Snap-On Fascia is a two-part assembly with a rigid terminator base plate and a decorative snap-on fascia cover for single-ply roofs. The fascia is fabricated from aluminum or galvanized steel in various finishes and features concealed splice plates. The 12' long retainer base plate is 20-gauge galvanized steel with  $\frac{1}{2}$ " pre-punched holes for provided fasteners at 12" on center.

### Features and Benefits

- » Clamps membrane against the building's perimeter
- » Allows for the use of high-torque screws without penetrating the membrane's top surface
- » ANSI/SPRI/FM-4435 ES-1 tested to comply with International Building Code requirements
- » Factory Mutual Approved for wind uplift protection
- » Miami-Dade Approved to comply with the High Velocity Hurricane Zone of the Florida Building Code
- » Prefabricated miters and accessories ensure a proper fit, provide a cleaner appearance, and prevent the need for any field fabrication
- » Sizes range from 3  $\frac{1}{2}$ " up to 12  $\frac{1}{4}$ " face heights to accommodate multiple nailers and coverage requirements
- » Its unique design allows for covers to be manufactured in 22 gauge and 24 gauge steel, .040" and .050" aluminum

### Installation

Review Carlisle specifications and details or visit [www.metalera.com/brands/carlisle](http://www.metalera.com/brands/carlisle) for complete installation information.

### Finishes

- » Natural mill-finish aluminum
- » Pre-finished Kynar® standard and low gloss
- » Premium metallic Kynar
- » Anodized aluminum – clear, dark bronze, and black
- » Drexlume – Acrylic coated galvalume
- » HDG90 Galvanized Steel
- » Custom post-painted Kynar finishes available upon request
- » Please consult color chart for color and gauge/thickness availability, non stock combinations require minimum order and extended lead time

### Quality Assurance

SecurEdge CF Snap-On Fascia is tested per ANSI/SPRI/FM 4435/ES-1 Test Methods RE-1 and RE-2 for evaluation of membrane securement strength. Fascia is certified to design pressures as indicated in current edition of ANSI/SPRI ED-1 Design Standard for Edge Systems Used with Low Slope Roofing Systems. Meets International Building Code requirements. Miami-Dade approved to comply with the High-Velocity Hurricane Zone of the Florida Building Code. Factory Mutual approved for wind uplift protection.

### Technical Services

Engineering and shop drawings, as well as long-form specifications and CAD details, are available from Carlisle. Product samples, detail sheets, color chips, and color charts are also available for submittal packages. For assistance with questions or submittals, contact Carlisle or your local manufacturer's representative.

### Specifications

Fascia Model	Fascia Height	Nailer Thickness	Nailer Coverage
TE-350	3.5"	2.75"	1 Nailer
TE-475	4.75"	4"	2 Nailers
TE-625	6.25"	5.5"	3 Nailers
TE-775	7.75"	7"	4 Nailers
TE-925	9.25"	8.5"	5 Nailers
TE-1075	10.75"	10"	6 Nailers
TE-1225	12.25"	11.5"	7 Nailers

### Warranty

Carlisle's SecurEdge CF Snap-On Fascia is warranted in conjunction with the roofing system, in an edge to edge warranty up to 30 years with 120mph windspeeds. A non-prorated 35 year Kynar finish warranty is also available.