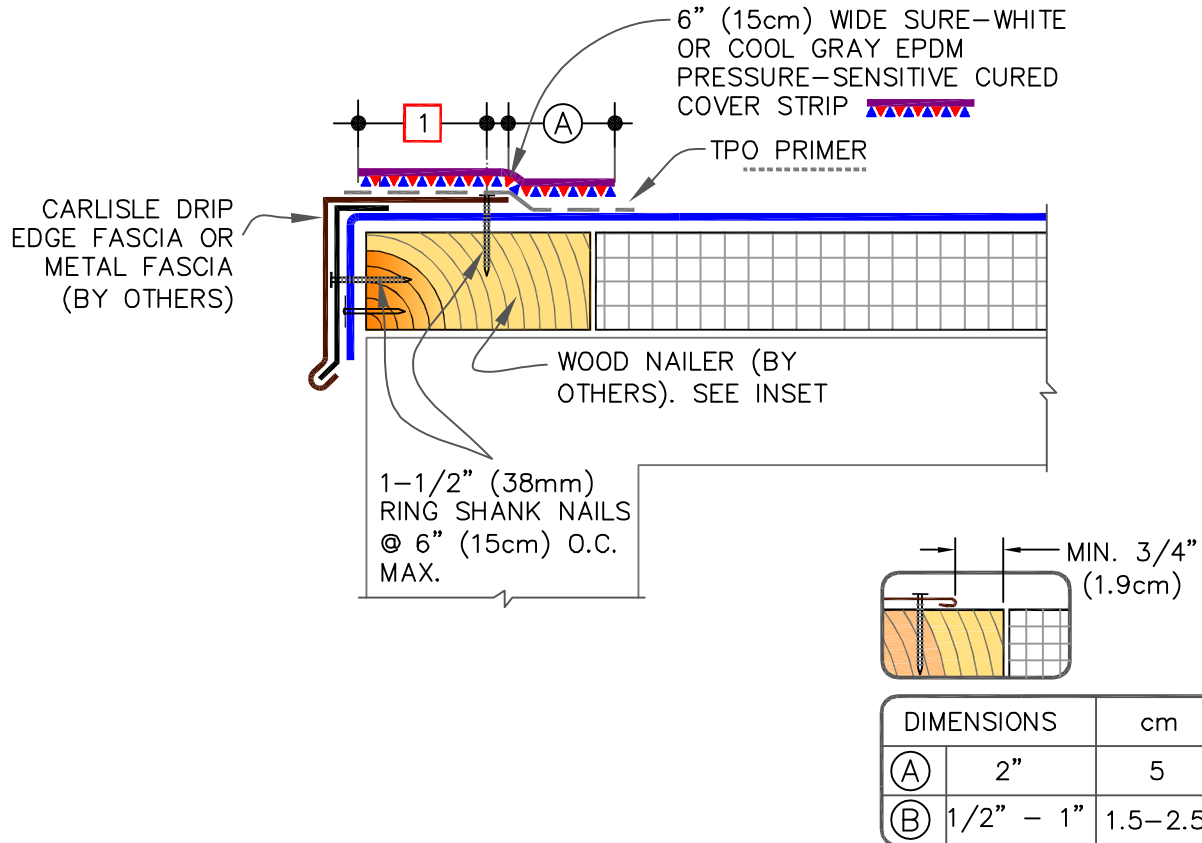


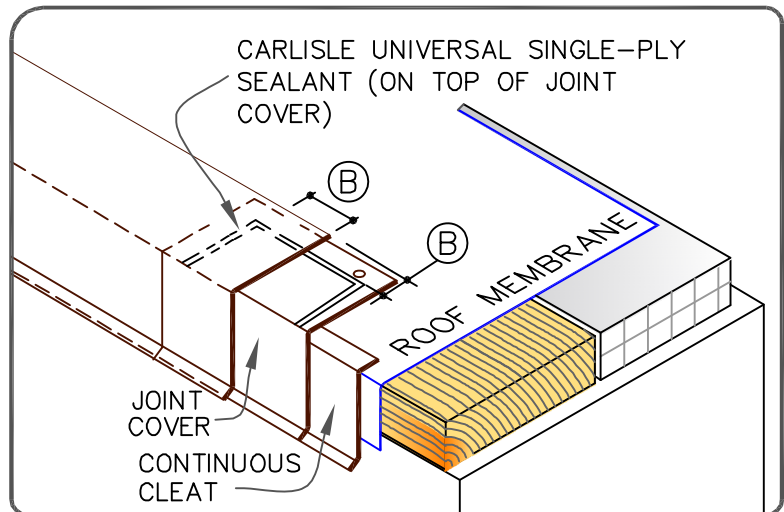
CAUTIONS

- THIS DETAIL IS NOT RECOMMENDED FOR ROOFS THAT ARE LIKELY TO EXPERIENCE SIGNIFICANT SNOW AND ICE UP-SLOPE FROM THE GUTTER /EDGE. REFER TO DETAILS [U-1B](#) OR [U-1C](#).
- FOR 30-YEAR WARRANTY PROJECTS, SEE DETAILS [U-1.B](#), [U-1C](#), [U-1D](#), [U-1E](#) OR [U-1F](#).



NOTES:

- METAL FASCIA DECK FLANGE MUST BE TOTALLY COVERED BY SURE-WHITE OR COOL GRAY PRESSURE-SENSITIVE COVER STRIP WITH MINIMUM 2" (5cm) COVERAGE PAST NAIL HEADS.
- TO REMOVE FINISHING OILS, SCRUB METAL FLANGE WITH WEATHERED MEMBRANE CLEANER; ALLOW TO DRY PRIOR TO APPLYING TPO PRIMER.
- WHEN METAL FASCIA BY OTHERS IS USED, FASTENER TYPE AND FASTENING FREQUENCY SHALL BE RECOMMENDED BY METAL EDGE MANUFACTURER.
- T-JOINT COVERS ARE REQUIRED AT INTERSECTIONS WITH 60-MIL (1.52mm) OR 80-MIL (2.03mm) MEMBRANES.



DRIP EDGE FASCIA WITH EPDM FLASHING

MAXIMUM WARRANTY: 20 YEARS



DETAIL NO.

U-1AT