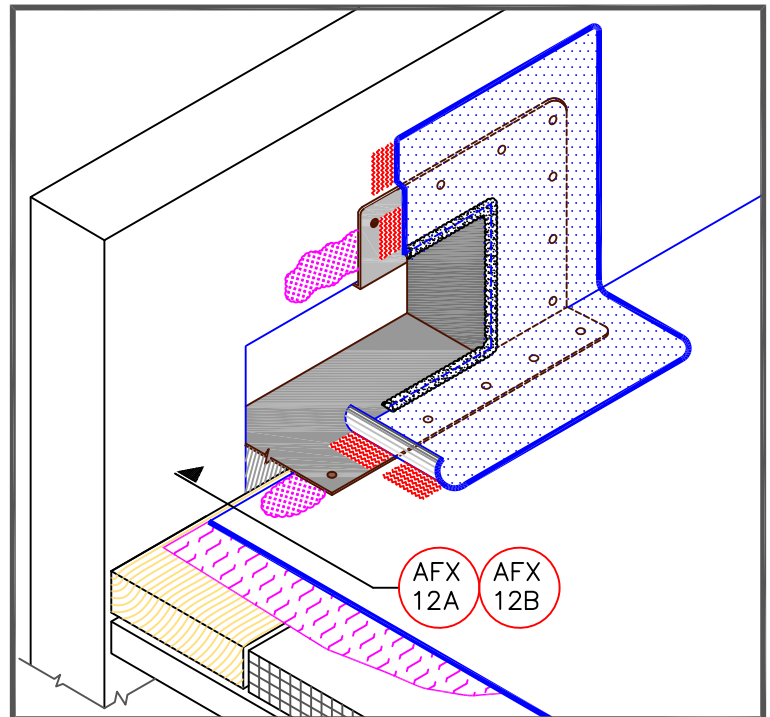


## NOTES:

- WOOD NAILERS ARE INSTALLED ONLY AT SCUPPERS TO SECURE METAL SLEEVE AND MUST EXTEND PAST THE WIDTH OF METAL SLEEVE FLANGE.
- INSTALL WALL FLASHING PRIOR TO SCUPPER INSTALLATION.
- METAL SCUPPER BOX MUST HAVE CONTINUOUS FLANGES WITH ROUNDED CORNERS. SOLDER ALL SCUPPER SEAMS WATER-TIGHT.
- WATER CUT-OFF MASTIC UNDER SCUPPER FLANGE MUST BE UNDER CONSTANT COMPRESSION.
- SCUPPER FLANGES MUST BE TOTALLY COVERED BY NON-REINFORCED TPO FLASHING WITH MINIMUM 2" (5cm) COVERAGE PAST NAIL HEAD.
- UNIVERSAL SINGLE-PLY SEALANT IS REQUIRED AT FLASHING EDGES ON SCUPPER EDGE. TPO PRIMER MUST BE USED TO PREPARE SURFACES PRIOR TO THE APPLICATION OF SEALANT.



THROUGH-WALL SCUPPER WITH  
SecurWELD METAL

MAXIMUM WARRANTY: 25 YEARS



DETAIL NO.

AFX-18B

AFX ADHERED