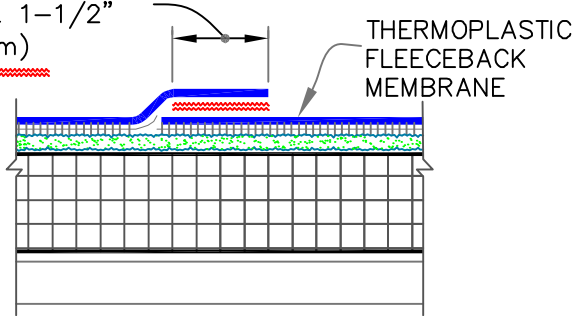


## MEMBRANE SPLICE

HOT AIR WELD  
MIN. 1-1/2"  
(4cm)

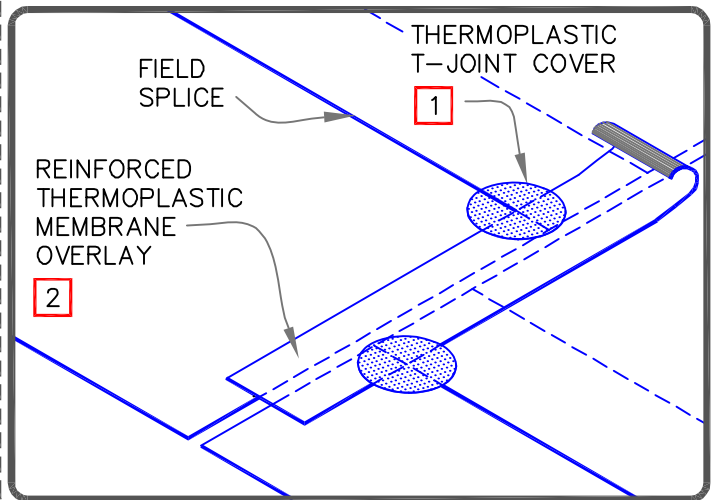
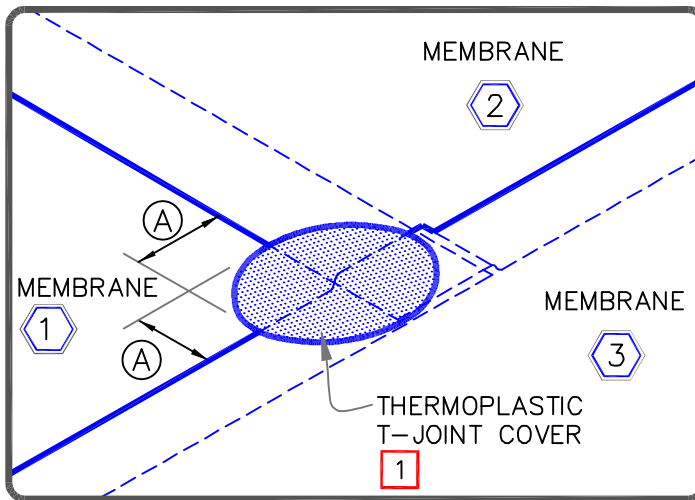
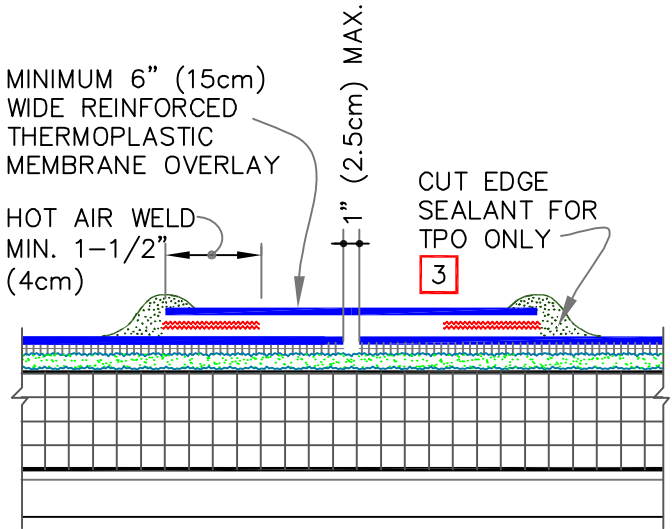


## END LAP SPLICE

MINIMUM 6" (15cm)  
WIDE REINFORCED  
THERMOPLASTIC  
MEMBRANE OVERLAY

HOT AIR WELD  
MIN. 1-1/2"  
(4cm)

CUT EDGE  
SEALANT FOR  
TPO ONLY



| DIMENSION  | cm |
|------------|----|
| (A) 2-1/4" | 6  |

## NOTES:

1. WHEN USING 115-MIL TPO OR 135-MIL TPO, 135-MIL PVC OR KEE HP FLEECEBACK MEMBRANE, APPLY A 4-1/2" (11cm) DIAMETER THERMOPLASTIC "T-JOINT" COVER AT ALL FIELD SPLICE INTERSECTIONS.
2. WHEN USING 60 OR 80 MIL THERMOPLASTIC REINFORCED MEMBRANE OVERLAY, INTERSECTIONS BETWEEN SPLICES MUST BE OVERLAID WITH A 4-1/2" (11cm) DIAMETER THERMOPLASTIC "T-JOINT" COVER.
3. APPROXIMATELY 1/8" (0.5cm) DIAMETER BEAD OF CUT-EDGE SEALANT IS REQUIRED ON CUT EDGES OF REINFORCED TPO MEMBRANE.
4. WHEN USING 115-MIL FLEECEBACK TPO, MAXIMUM WARRANTY IS 20 YEARS

|  |                       |
|--|-----------------------|
|  | — FleeceBACK MEMBRANE |
|  | — APPROVED ADHESIVE   |
|  | — APPROVED SUBSTRATE  |
|  | — SEE NOTE(S)         |

THERMOPLASTIC MEMBRANE SPLICES

MAXIMUM WARRANTY: 30 YEARS



DETAIL NO.

FB-2B.1

FLEECEBACK ADHERED