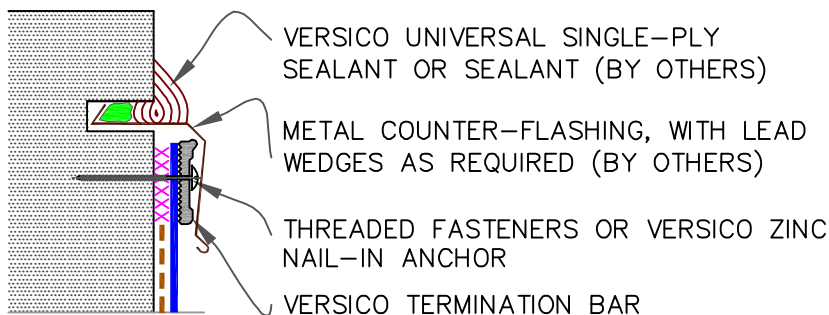


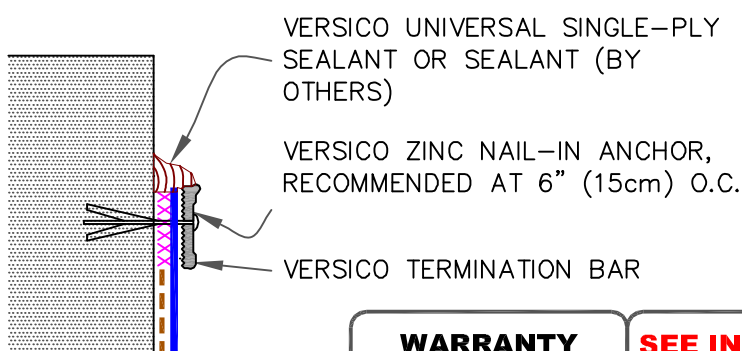
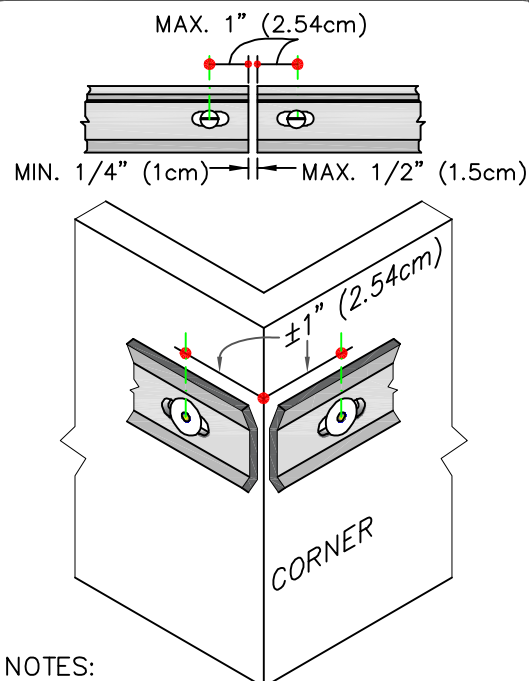
9.1

MECHANICAL TERMINATION WITH COUNTER FLASHING

**WARRANTY
UP TO 30 YEARS****SEE INSET
A**

9.2

MECHANICAL TERMINATION

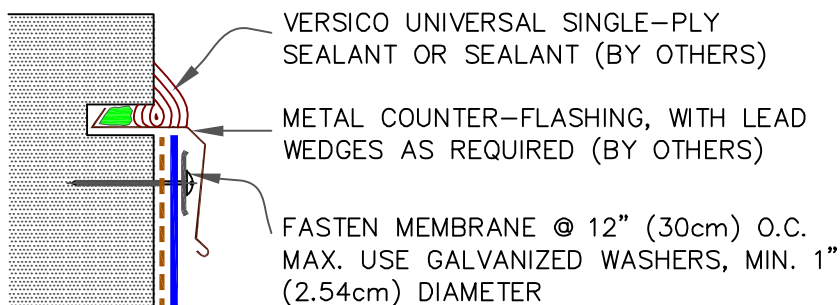
**WARRANTY
UP TO 20 YEARS****SEE INSET
A****INSET A**

NOTES:

1. APPLY ON HARD SMOOTH SURFACE ONLY; NOT FOR USE ON EXPOSED WOOD.
2. DO NOT WRAP TERMINATION BAR AROUND CORNERS.
3. DETAIL 9.4 MUST BE USED AT VERTICAL JOINTS IN PANEL WALLS.

9.3

COUNTER FLASHING TERMINATION



NOTE:

1. WHEN MECHANICAL FASTENERS ARE USED TO PENETRATE THE METAL COUNTER-FLASHING, USE EPDM WASHERS, APPLY WATER CUT-OFF MASTIC UNDER THE COUNTER-FLASHING OR SEAL THE FASTENER HEADS.

**WARRANTY
UP TO 10 YEARS**

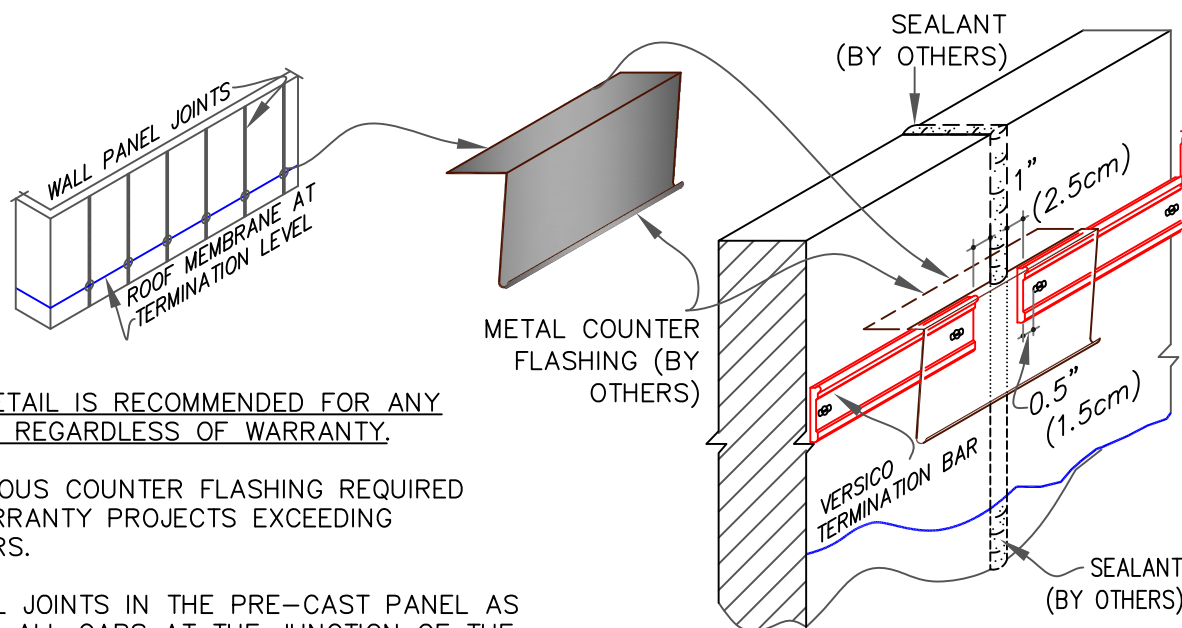
--- APPLICABLE BONDING ADHESIVE

xxx

WATER CUT-OFF MASTIC- MUST BE HELD UNDER CONSTANT COMPRESSION.

9.4

MECHANICAL TERMINATION AT VERTICAL JOINTS



NOTES:

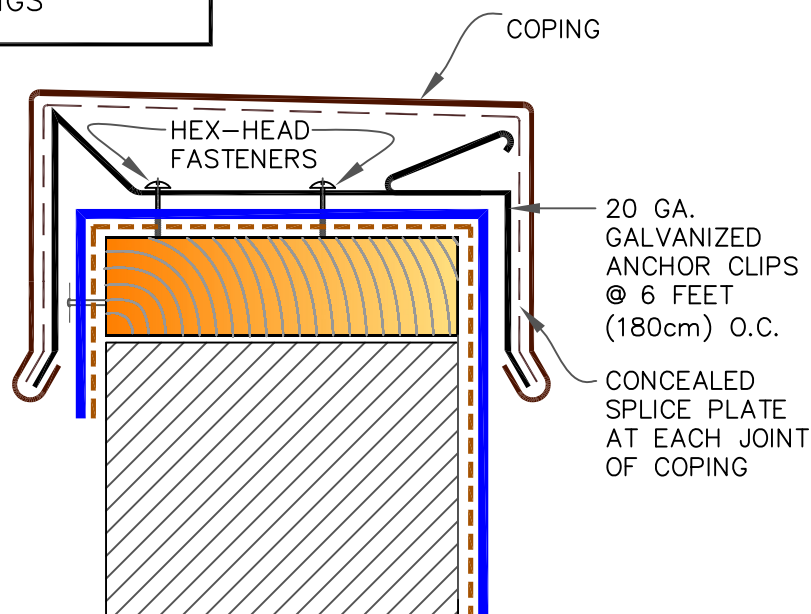
1. THIS DETAIL IS RECOMMENDED FOR ANY PROJECT REGARDLESS OF WARRANTY.
2. CONTINUOUS COUNTER FLASHING REQUIRED FOR WARRANTY PROJECTS EXCEEDING 20-YEARS.
3. VERTICAL JOINTS IN THE PRE-CAST PANEL AS WELL AS ALL GAPS AT THE JUNCTION OF THE TILT-UP PANEL AND ROOF DECK MUST BE FULLY SEALED TO PREVENT AIR INFILTRATION.
4. APPLY ON HARD SMOOTH SURFACE ONLY.

9.5

VERSITRIM 200 & 300 COPINGS

NOTES:

1. MEMBRANE MUST BE EXTENDED AT CORNERS TO PROVIDE COMPLETE COVERAGE OF THE TOP WALL SURFACE. REFER TO 3D DETAIL ON DETAIL U-9.6.
2. REFER TO VERSITRIM COPING INSTALLATION INSTRUCTION MANUAL FOR STEP-BY-STEP INSTRUCTION PROCEDURES.



--- APPLICABLE BONDING ADHESIVE

xxx WATER CUT-OFF MASTIC- MUST BE HELD UNDER CONSTANT COMPRESSION.



MEMBRANE TERMINATIONS,
PAGE 2 OF 3

WARRANTY AS NOTES FOR EACH DETAIL

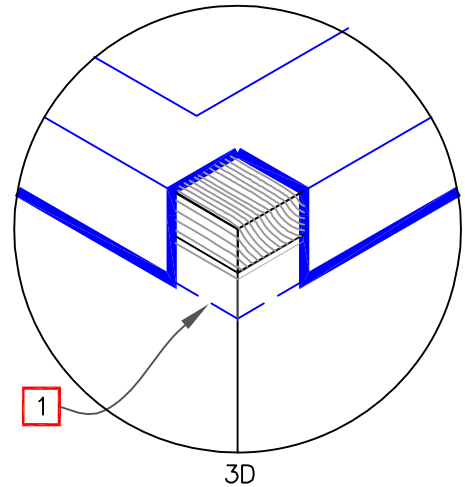
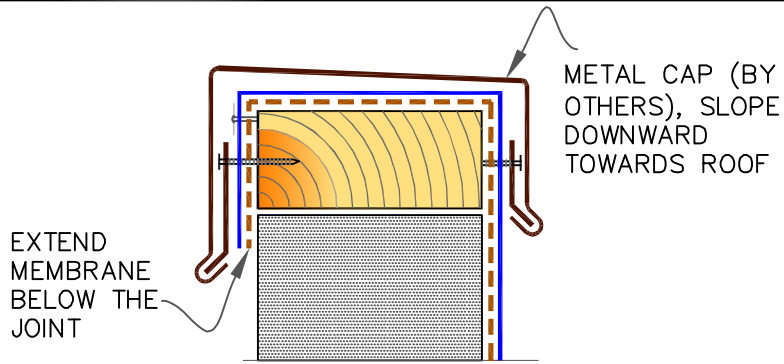
— TPO MEMBRANE
— APPROVED SUBSTRATE
0 — SEE NOTE

PS (PRESSURE SENSITIVE)
P&S (PEEL & STICK)
QA (QUICK APPLIED)

THERMOPLASTIC
ROOFING SYSTEM

TPC-9

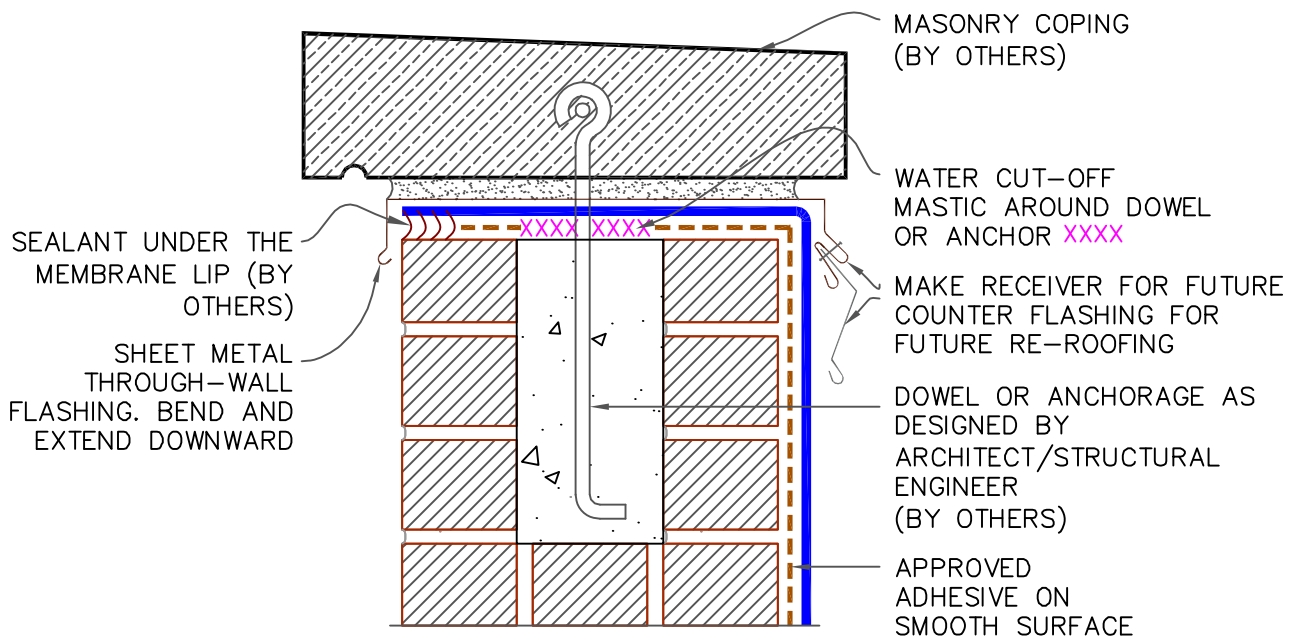
9.6 SHEET METAL COPING (BY OTHERS)



NOTES:

1. MEMBRANE MUST BE EXTENDED TO CORNERS TO PROVIDE COMPLETE COVERAGE OF THE TOP WALL SURFACE.
2. WARRANTY AS PROVIDED (BY OTHERS).

9.7 MASONRY COPINGS (BY OTHERS)



--- APPLICABLE BONDING ADHESIVE

xxx WATER CUT-OFF MASTIC- MUST BE HELD UNDER CONSTANT COMPRESSION.