

## Single-Source Overburden Warranty Information Sheet

Carlisle SynTec Systems' Single-Source Overburden Warranty covers removal and replacement of Carlisle-supplied overburden components needed to access the roof membrane in the event of a leak. Carlisle's Single-Source Overburden Warranties are available for overburden systems supplied by Carlisle and installed over an approved Carlisle warranted roof system. Overburden Warranties eliminate unexpected and costly building owner liability and ensure that the roofing system is protected for up to 20 years.

### THE ADVANTAGE OF A "SINGLE-SOURCE" OVERBURDEN WARRANTY

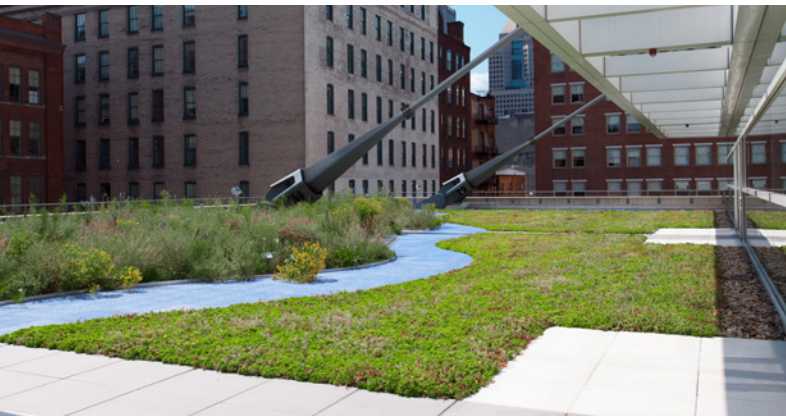
Many green roof and paver manufacturers offer overburden warranties that are not tied to the roof membrane manufacturer or membrane warranty. These generic overburden warranties can and will lead to finger-pointing in the event of a roof leak, which can lead to litigation. "Single-source" overburden warranties are only available from roof membrane manufacturers like Carlisle. They ensure that the building owner is protected from unexpected and costly liability by providing a single company to contact in the event of a roof leak and subsequent warranty claim.

### CARLISLE'S SINGLE-SOURCE OVERBURDEN WARRANTY

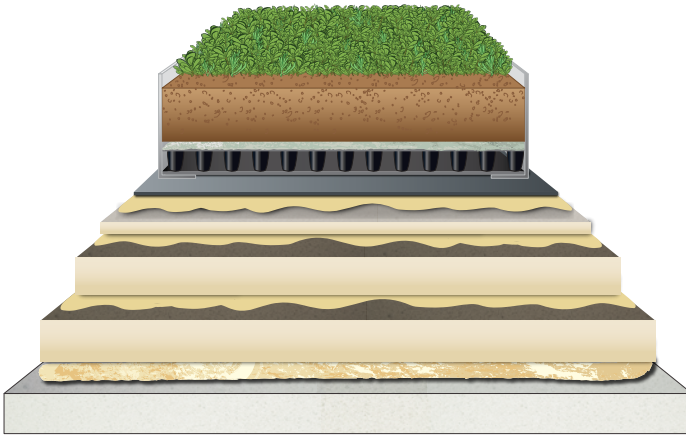
Carlisle's Single-Source Overburden Warranty is an add-on to a Carlisle Total Roof System Warranty. They are available for any Carlisle-supplied overburden system installed over an approved and warranted Carlisle roofing system. Carlisle has several overburden systems available such as concrete, porcelain, and rubber Plaza Paver systems, as well as traditional and modular Roof Garden systems. Carlisle's Single-Source Overburden Warranties are available for up to 20 years for both new Carlisle warranted roof systems and existing Carlisle warranted roofing systems that wish to retroactively install Carlisle overburden components.

### ELIGIBILITY REQUIREMENTS

- » Roof system must be supplied and warranted by Carlisle.
- » Roof system must be approved by Carlisle for the specific overburden system being installed. Depending on the overburden being used, roof system enhancements may be required.
- » Roof system must be installed by a Carlisle Certified Installer.
- » A Carlisle Field Service Representative must inspect and approve the Carlisle roof system prior to overburden installation. Any and all repair work that is required must be completed and the roof re-inspected, until approval is granted.
- » Depending on the overburden system to be installed, flood testing or electronic leak detection testing may need to be performed to ensure watertight integrity prior to overburden installation.
- » All overburden components to be covered under Carlisle's Single-Source Overburden Warranty **must be purchased through Carlisle.**
- » For new roofs and existing roofs less than 2 years old, overburden components must be installed by the Carlisle Certified Installer that installed the roof, or by a sub-contractor arranged or approved by the original Carlisle Certified Installer that installed the roof.



## ROOF SYSTEM DESIGN REQUIREMENTS FOR ROOF GARDEN APPLICATIONS



- » Minimum ½" cover board.\* Cover board must be adhered.
- » Membrane must be adhered.
- » All concealed membrane seams must be overlaid with min. 6" Pressure-Sensitive Cover Strips.\*\*
- » Electronic leak detection (ELD) or flood testing required prior to overburden installation.

\*Cover board not required when membrane is adhered directly to concrete deck

\*\*12" cover strip is required for deep assemblies warranted for 20 years

### Minimum Membrane Thicknesses for Traditional Roof Garden Systems

Roof Garden Type	EPDM		TPO		PVC/KEE HP	
	10-/15-year	20-year	10-/15-year	20-year	10-/15-year	20-year
Extensive/Shallow	60 mil 115 mil FB 105 mil AFX	75 mil 145 mil FB 105 mil AFX	60 mil 115 mil FB 135 mil AFX	80 mil 135 mil FB 155 mil AFX	60 mil 115 mil FB	80 mil 135 mil FB
Semi-Intensive/Medium	75 mil 115 mil FB 105 mil AFX	90 mil 145 mil FB 105 mil AFX	80 mil 115 mil FB 135 mil AFX	80 mil 135 mil FB 155 mil AFX	80 mil 115 mil FB	80 mil 135 mil FB
Intensive/Deep	90 mil 115 mil FB 105 mil AFX	90 mil 145 mil FB	80 mil 115 mil FB 135 mil AFX	135 mil FB	80 mil 115 mil FB	135 mil FB

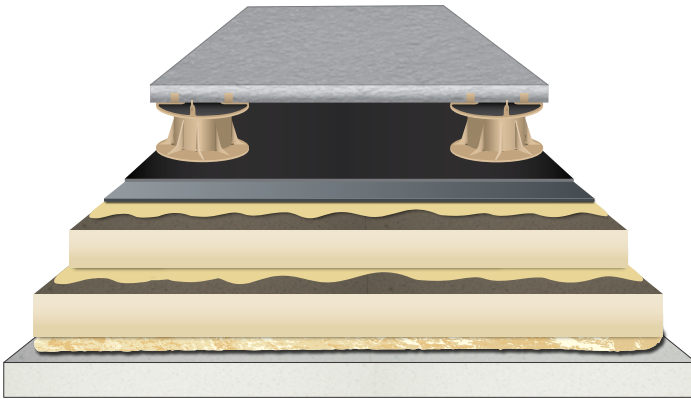
For specific design and installation requirements, view Carlisle's Traditional Roof Garden Specification and Details.

### Minimum Membrane Thicknesses for Modular Roof Garden Systems

EPDM 10/15/20 year	TPO 10/15/20 year	PVC/KEE HP 10/15/20 year
60 mil 115 mil FB 105 mil AFX	60 mil 115 mil FB 135 mil AFX	60 mil 115 mil FB

For specific design and installation requirements, view Carlisle's Modular Roof Garden Specification and Details.

## ROOF SYSTEM DESIGN REQUIREMENTS AND CONSIDERATIONS FOR PAVER APPLICATIONS



- » A cover board is recommended but not required.
- » Top layer of insulation or cover board may be adhered or mechanically fastened.\*
- » Membrane can be adhered or mechanically fastened.\*
- » Cover strips over seams are recommended but not required.
- » Electronic leak detection (ELD) or flood testing is recommended but not required.
- » Protection fabric required for most paver applications. For specific protection fabric requirements, see Paver Spec Supplement and Details.

\*If pavers and pedestals are used over mechanically fastened insulation and/or membrane, care should be taken to avoid placing pedestals directly over plates and fasteners.

### Minimum Membrane Thicknesses for Paver Systems

EPDM 10/15/20 year	TPO 10/15/20 year	PVC/KEE HP 10/15/20 year
60 mil 115 mil FB 105 mil AFX	60 mil 115 mil FB 135 mil AFX	60 mil 115 mil FB

For specific design and installation requirements, view Carlisle's Paver Spec Supplement and Details.

## SINGLE-SOURCE OVERBURDEN WARRANTY FEES AND DURATIONS

Carlisle Single-Source Overburden Warranties are available for 10-, 15-, and 20-year durations. For retroactively installed overburden systems installed over an existing Carlisle warranted roof, the duration of the overburden warranty is limited to the number of years remaining on the roof system warranty – up to 20 years.

### Roof Garden Systems\*\*

	10 years	15 years	20 years
Traditional Roof Garden	\$0.20/ft <sup>2</sup>	\$0.25/ft <sup>2</sup>	\$0.30/ft <sup>2</sup>
Minimum Warranty Charge	\$2,000	\$2,500	\$3,000
Modular Roof Garden	Free	Free	Free

### Pavers and GRO Synthetic Turf\*\*

Paver and Turf Area <10,000 ft <sup>2</sup> *	\$1,000
Paver and Turf Area ≥10,000 ft <sup>2</sup> and <20,000 ft <sup>2</sup> *	\$1,500
Paver and Turf Area ≥20,000 ft <sup>2</sup> *	\$3,000

\*Paver and GRO Turf warranty fees are based on total overburden size for the project. The fees listed are applicable for any duration up to 20 years, limited by the roof system warranty duration.

\*\*Warranty fees are limited to 12 inches of overburden thickness, including drainage layers, insulation, etc. For overburden thicknesses greater than 12 inches, an additional \$0.01/ft<sup>2</sup>/inch of overburden depth will be added to the standard fee.