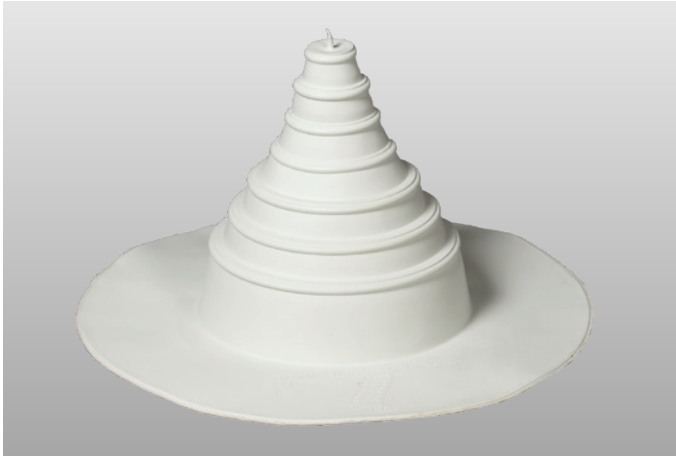


VersiGard® White EPDM Peel & Stick Pipe Seals



Overview

Versico's VersiGard White EPDM Peel & Stick (P&S) Pipe Seals are cured, pre-molded EPDM flashing designed for pipes 1" to 6" in diameter.

Features and Benefits

- Fits pipes from 1" to 6" (25 mm – 150 mm) in diameter
- P&S Pipe Seals have pre-applied P&S Seam Tape on the bottom of the deck flange which affords easy installation and strong membrane bonding
- Designed to be used with Versico's VersiGard EPDM White and VersiWeld® TPO membranes.

Installation

1. Remove all lead and other flashing material.
2. The entire surface where the P&S Pipe Seal will be applied must be clean. The adhesive on the back of the P&S Pipe Seal will not adhere to dusted or dirty surfaces. Any residual contamination will be detrimental to the bond strength of the adhesive.

3. Remove all foreign material.
 - a. Remove excess mica dust by brooming or wiping with a clean, dry rag or HP Splice Wipe.
 - b. The use of Weathered Membrane Cleaner may be necessary. This process is essential on membrane that has been exposed for a number of weeks.

Note: Permeation-resistant gloves (that meet ANSI/ISEA 105- 2005) are required for hand protection when cleaners or primers are being used.
 - c. Allow the membrane to dry thoroughly before proceeding.
4. Cut the P&S Pipe Seal above the raised "ring" that is one size smaller than pipe diameter.
5. Pull P&S Pipe Seal over pipe until base flange is in contact with the membrane.
6. Mark pipe around the top of the P&S Pipe Seal.
7. Pull P&S Pipe Seal upwards on pipe until mark on the pipe is visible.
8. Install Water Cut-Off Mastic below the mark, which indicates the top of the installed P&S Pipe Seal.
9. Application of V-150 Primer, TPO Primer, or Low-VOC Primer:
 - a. Standard (Dusted) Membrane – Apply the appropriate primer with a clean Splice Wipe (or equivalent). Scrub the membrane area where the P&S Pipe Seal is to be applied in a circular motion to achieve a thin, even coating on the membrane. The properly cleaned/ primed area will be uniform in color and free of streaks, globs, or puddles.
 - b. Pre-Cleaned (No Dust) EPDM or TPO Membrane – Roller-apply the appropriate primer to the membrane with a short nap length paint roller. The coated area will be free of streaks, globs, or puddles.

Note: Using excessive amounts of primer will not significantly enhance the adhesion of the P&S Pipe Seal to the membrane. Use only the amount necessary to obtain 100% coverage of the area where the P&S Pipe Seal will be applied.
10. Allow the primer to properly flash off until it does not transfer to a dry finger touch. Install the P&S Pipe Seal as soon as the primer flashes off to minimize potential dust contamination and promote adhesion in colder weather.
11. Pull P&S Pipe Seal back down over the pipe and into position.
12. Remove release liner from the tape and, with hand pressure, press tape to the primed area. Roll splice area with a 2" roller.

VersiGard White EPDM Peel & Stick Pipe Seals

13. Install a stainless steel universal clamping ring to the top of the P&S Pipe Seal to provide constant compression of the Water Cut-Off Mastic.
14. When a field splice intersects a P&S Pipe Seal, install a T-Joint Cover.

REVIEW CURRENT VERSICO SPECIFICATIONS AND DETAILS FOR SPECIFIC INSTALLATION REQUIREMENTS.

Precautions

- Remove all lead and other flashing.
- Temperature of pipe must not exceed 180°F (82°C).
- Deck flanges of the P&S Pipe Seal should not be overlapped, cut or applied over any angle change.
- Additional membrane securement is required on mechanically attached roofing systems, refer to detail VGMA 8.1.
- When clamping ring is to be used with a 1"-diameter pipe, the following method must be utilized to provide proper clamping.
 - Lift the tightening screw and slip the loose end of the clamping ring under this tightening apparatus. A complete circle will now be formed with the metal band.
 - Pull the loose end of the clamping ring until a circle with a diameter of approximately 1.5" is formed.
 - Insert the loose end of the clamping ring under the tightening screw for the second time so a double layer of the metal bands results.
 - Flip the tightening apparatus into position and turn the tightening screw until the appropriate clamping pressure is achieved against the sealant and pipe penetration.

Typical Properties and Characteristics

Material	Molded EPDM
Color	White
Size	1"–6" (25 mm–150 mm) Pipe
Packaging	10/carton
Weight	11 lbs./carton (5 Kg)
Shelf Life	1 year

Typical properties and characteristics are based on samples tested and are not guaranteed for all samples of this product. This data and information is intended as a guide and does not reflect the specification range for any particular property of this product.

LEED® Information

Pre-consumer Recycled Content	2%
Post-consumer Recycled Content	0%
Manufacturing Location	Greenville, IL
Solar Reflectance Index	N/A



A SINGLE SOURCE FOR SINGLE-PLY ROOFING

800.992.7663 • www.versico.com