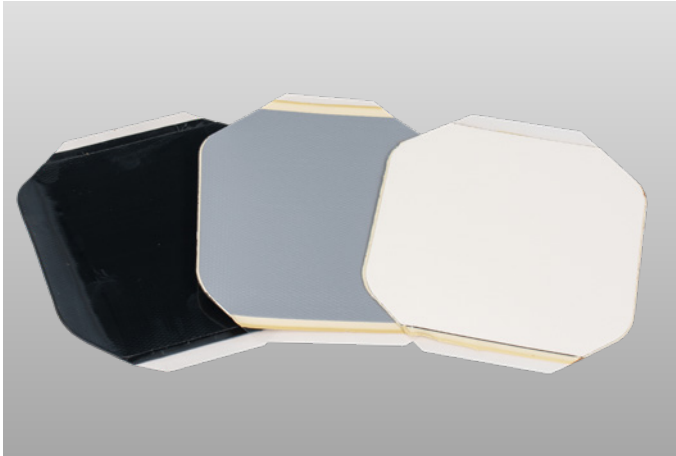


# Pressure-Sensitive T-Joint Covers



## Overview

Let Carlisle simplify your next EPDM installation with their Sure-Seal® and Sure-White® EPDM Pressure-Sensitive (PS) T-Joint Covers. The black 6" PS T-Joint Cover combines 40-mil (1 mm), uncured Elastoform Flashing® laminated to 30-mil (0.75 mm), fully cured PS adhesive providing 70 mils (1.75 mm) of total thickness. The black 12" T-Joint Cover and 6" white and grey combines 60-mil (1.5 mm), uncured flashing laminated to 30-mil (0.75 mm), fully cured PS adhesive providing 90 mils (2.25 mm) of total thickness.

PS T-Joint Covers are used to seal field splice intersections, horizontal-to-vertical transitions of field splices, and 30-year outside corner details on Sure-Seal, Sure-White, and Sure-Tough® EPDM membrane roofing systems.

## Features and Benefits

- » Available in 6" x 6" (black, white, or gray) and 12" x 12" (black)
- » Pre-cut with rounded corners increases installation speed by eliminating the need for cutting
- » Sure-White T-Joint Covers is approved for use on EPDM and TPO membranes
- » Can also be used for 30-year outside corner detail U-15H

## Installation

1. The entire surface where the PS T-Joint Cover will be applied must be clean. The adhesive on the back of the PS T-Joint Cover will not adhere to dusted or dirty surfaces. Any residual contamination will be detrimental to the bond strength of the adhesive.

2. Remove all foreign material.

- a. Remove excess mica dust by brooming or wiping with a clean, dry rag or Carlisle HP Splice Wipe.
- b. The use of Weathered Membrane Cleaner may be necessary. This process is essential on membrane that has been exposed for a number of weeks.

Note: Permeation-resistant gloves (that meet ANSI/ISEA 105-2005) are required for hand protection when cleaners or primers are being used.

- c. Allow the membrane to dry thoroughly before proceeding.

3. Application of HP-250 Primer, TPO Primer, or Low-VOC Primer

- a. Standard Membrane - Apply the primer with a clean HP Splice Wipe (or equivalent). Scrub the area of the membrane (where the PS T-Joint Cover is to be applied) in a circular motion to achieve a thin, even coating on the membrane. The properly cleaned/primed area will be uniform in color without streaks and free of globs or puddles.

Note: Membrane type determines which primer to use. TPO Primer is used with TPO, HP-250 Primer is used with EPDM, and Low-VOC

- a. Primer can be used with both TPO and EPDM.

- b. Pre-Kleened™ EPDM or TPO Membrane - Roller-apply the primer to the membrane with a short nap-length paint roller. The coated area will be free of globs or puddles.

Note: The use of excessive amounts of primer will not significantly enhance the adhesion of the PS T-Joint Cover to the membrane. Use only the amount necessary to obtain 100% coverage of the area where the PS T-Joint Cover will be applied.

4. For EPDM membranes apply a  $\frac{5}{16}$ "-diameter (8 mm) bead of Sure-Seal Lap Sealant  $\frac{1}{2}$ " (13 mm) in each direction from the membrane intersection according to detail U-2-A.

5. Allow the primer to properly flash off until it does not transfer to a dry finger touch. Install the PS T-Joint Cover as soon as the primer flashes off to minimize potential dust contamination and promote adhesion in colder weather.

# Pressure-Sensitive T-Joint Covers

6. Immediately roll the PS T-Joint Cover with a 2"-wide (50 mm) roller, using positive pressure. **Carefully** roll the area where lap sealant was applied using light pressure.
7. To achieve proper adhesion of the PS T-Joint Cover when jobsite temperatures fall below 40°F (4°C), heat the cleaned/primed area of the membrane with a hot-air gun as the flashing is applied and pressed into place.

Review Carlisle specifications and details for complete installation information.

## Precautions

- » Avoid prolonged contact with skin. In case of contact with skin, thoroughly wash affected area with soap and water.
- » Prolonged jobsite storage temperatures in excess of 90°F (32°C) will shorten product shelf life.
- » In warm, sunny weather, keep PS T-Joint Covers in their box in a shaded area until ready to use.
- » Storage and use of PS T-Joint Cover at temperatures below 40°F (4°C) will result in a loss of adhesive tack and, in extreme cases, will result in no bond to the substrate. Overnight storage must be available to keep the temperature of the T-Joint Cover at a minimum of 60°F (15°C). Hot boxes for jobsite storage must be provided to maintain a minimum product temperature of 40°F (4°C).
- » PS T-Joint Cover must be stored in a dry area. PS Elastoform flashing must be stored in a dry area. It is recommended to store the flashing below 80°F (27° C) to ensure maximum formability and shelf life.
- » Due to solvent flash-off, condensation may form on freshly applied primer when the ambient temperature is near the dew point. If condensation develops, the application of primer and PS T-Joint Cover must be discontinued as proper adhesion will not be achieved. Allow the surface to dry and apply a thin freshener coat of primer to the previously coated surface and apply PS T-Joint Cover when conditions allow.
- » Do not allow waste products (petroleum, grease, oil, solvents, vegetable or mineral oil, animal fats, etc.) or direct steam venting to come in contact with the PS T-Joint Cover.
- » KEEP OUT OF THE REACH OF CHILDREN.

## Typical Properties and Characteristics

Sizes	6" x 6" (150 mm x 150 mm) - Black, White and Gray 12" x 12" (300 mm x 300 mm) - Black
Packaging	20/carton
Weight	3 lbs/carton (1.35 kg) for 6" x 6" 10 lbs/carton (4.5 kg) for 12" x 12"
Shelf Life	9 months when stored between 60° and 80°F (15° to 27°C)

Typical properties and characteristics are based on samples tested and are not guaranteed for all samples of this product. This data and information is intended as a guide and does not reflect the specification range for any particular property of this product.

Sure-Seal and Sure-White Pressure-Sensitive T-Joint Covers meets or exceeds the minimum requirements set forth by ASTM D4811 for a Type 1 (EPDM), Class V (cures on the roof) flashing material.

## LEED® Information

Pre-consumer Recycled Content	2% (Sure-Seal Black Only)
Post-consumer Recycled Content	0%
Manufacturing Location	Greenville, IL
Solar Reflectance Index (SRI)	N/A