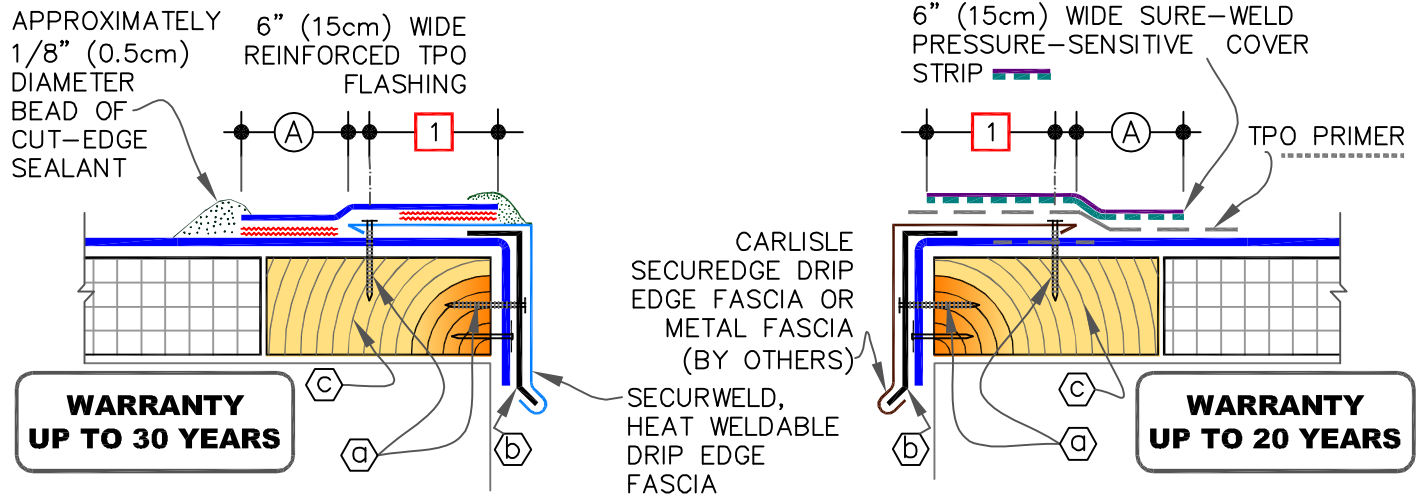


## CAUTIONS

- **DETAIL B** IS NOT RECOMMENDED FOR ROOFS THAT ARE LIKELY TO EXPERIENCE SIGNIFICANT SNOW AND ICE UP-SLOPE FROM THE GUTTER /EDGE. REFER TO DETAILS **U-1B** OR **U-1C**.
- FOR 30-YEAR WARRANTY PROJECTS, SEE ALSO DETAILS **U-1B, U-1C, U-1D OR U-1F**



**(A)** SECURWELD DRIP EDGE FASCIA

**(B)** SecurSeal DRIP EDGE FASCIA

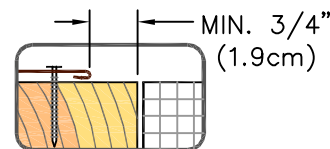
**(a)** M1-1/2" (3.8cm) RING SHANK NAILS  
6" (15cm) O.C. MAX.

**(b)** MINIMUM 22-GAUGE CONTINUOUS  
CLEAT.

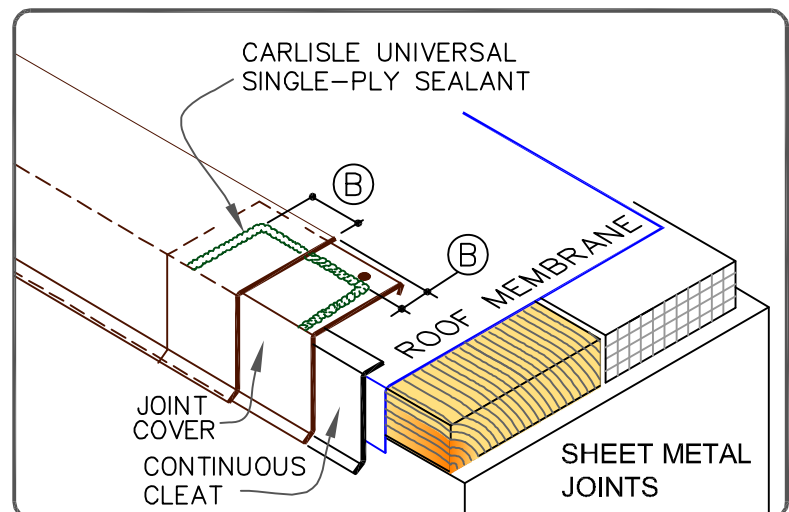
**(c)** WOOD NAILER (BY OTHERS)

## NOTES:

1. METAL FASCIA DECK FLANGE MUST BE TOTALLY COVERED BY TPO PRESSURE-SENSITIVE COVER STRIP WITH MINIMUM 2" (5cm) COVERAGE PAST NAIL HEADS.
2. TO REMOVE FINISHING OILS, SCRUB METAL FLANGE WITH WEATHERED MEMBRANE CLEANER; ALLOW TO DRY PRIOR TO APPLYING TPO PRIMER.
3. WHEN METAL FASCIA BY OTHERS IS USED, FASTENER TYPE AND FASTENING FREQUENCY SHALL BE RECOMMENDED BY METAL EDGE MANUFACTURER.
4. TO ENSURE TPO PRESSURE-SENSITIVE COVER STRIP CONFORMS TO STEP-OFFS, HEAT COVER STRIP AT SPLICE INTERSECTIONS PRIOR TO ROLLING.



DIMENSIONS		cm	
<b>(A)</b>	2"	5	MIN.
<b>(B)</b>	1/2"	1.5	TO
	1"	2.5	



DRIP EDGE FASCIA WITH TPO  
FLASHING

MAXIMUM WARRANTY: SEE EACH DETAIL  
(SEE CAUTION ON TOP OF PAGE)



DETAIL NO.

U-1A

U (UNIVERSAL DETAILS)