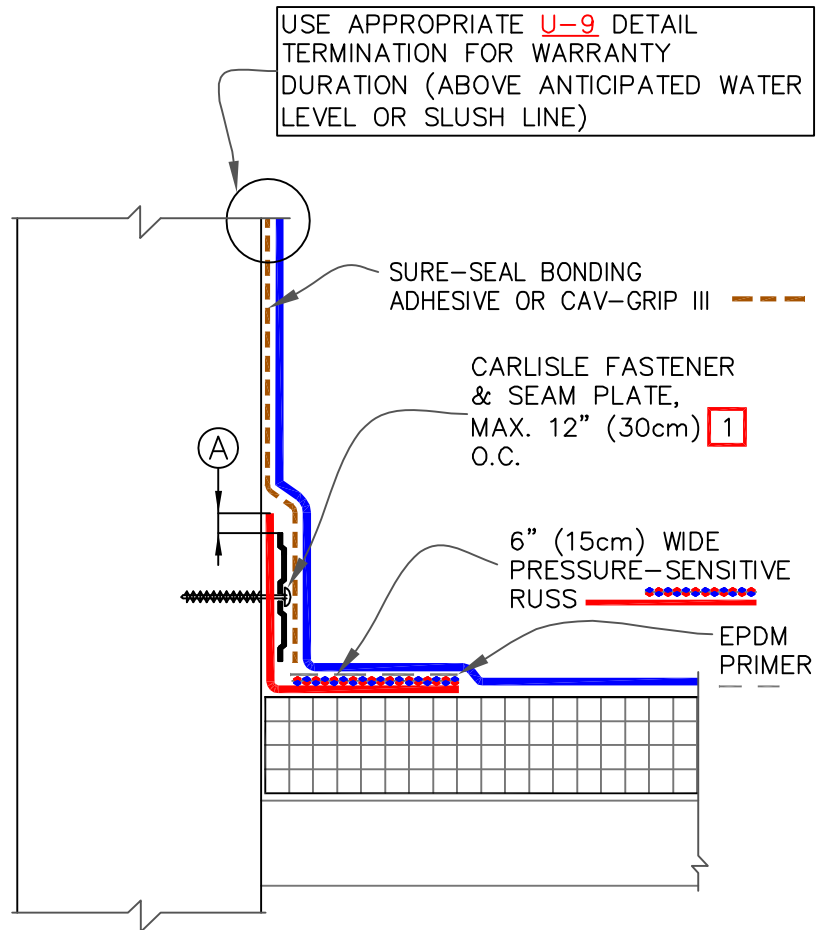


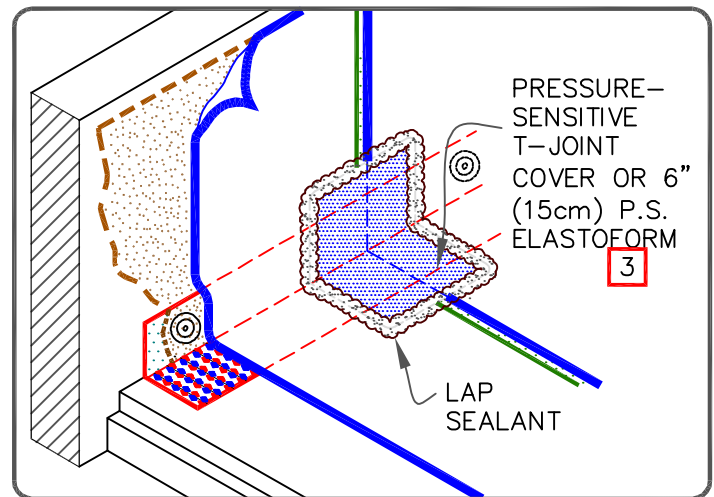
OPTIONAL: SEAM  
PLATE/FASTENER MAY BE  
INSTALLED INTO THE  
STRUCTURAL DECK UP TO 6"  
(15cm) FROM ANGLE CHANGE.



## NOTES:

1. FASTENERS AND PLATES ARE REQUIRED AT 6" (15cm) O.C. FOR ADHERED SYSTEMS WITH WARRANTY WIND SPEED COVERAGE GREATER THAN 90 MPH AND FOR ALL PROJECTS WITH WARRANTIES GREATER THAN 20 YEARS. HP FASTENERS AND POLYMER SEAM PLATES ARE REQUIRED OVER STEEL DECKS ON MECHANICALLY FASTENED SYSTEMS.
2. PROJECTS WITH 30-YEAR WARRANTY OR WHEN USING 90-MIL MEMBRANE, REFER TO DETAIL [U-2C](#).
3. FOR CORNERS AND RUSS APPLICATION REFER TO [DETAILS U-15A OR U-15B](#).

DIMENSION	cm
(A) 1/8"–1"	0.5–2.5



PARAPET / CURB WITH CONTINUOUS  
MEMBRANE

MAXIMUM WARRANTY: 30 YEARS



DETAIL NO.

U-12A

U (UNIVERSAL DETAIL)