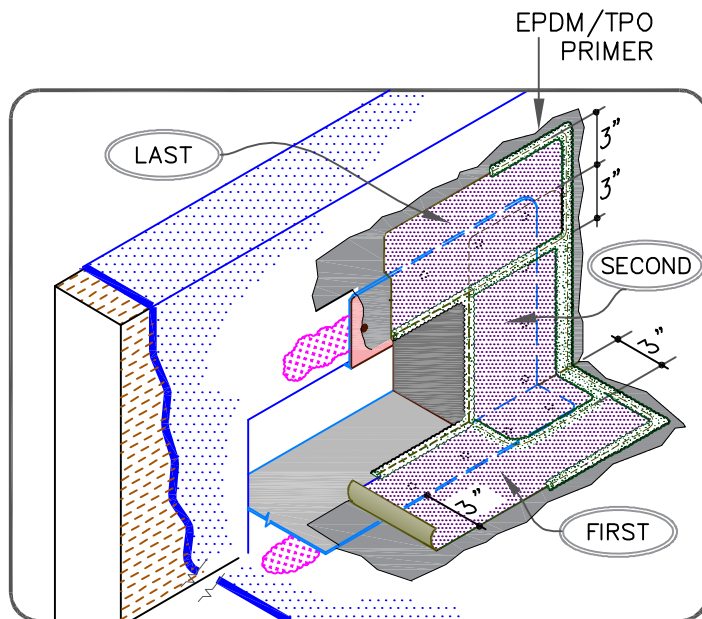


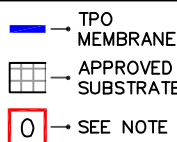
NOTES:

1. WOOD NAILERS ARE INSTALLED AT SCUPPERS TO SECURE METAL SLEEVE AND MUST EXTEND PAST THE WIDTH OF METAL SLEEVE FLANGE.
2. METAL SCUPPER BOX MUST HAVE CONTINUOUS FLANGES WITH ROUNDED CORNERS, SOLDER ALL SCUPPER SEAMS WATER-TIGHT.
3. WATER CUT-OFF MASTIC UNDER SCUPPER FLANGES MUST BE UNDER CONSTANT COMPRESSION.
4. SCUPPER FLANGES MUST BE TOTALLY COVERED BY PRESSURE-SENSITIVE UNCURED FLASHING WITH MINIMUM 2" (5cm) COVERAGE PAST NAIL HEAD.
5. UNIVERSAL SINGLE-PLY SEALANT IS REQUIRED AT FLASHING EDGES ON SCUPPER EDGE. TPO PRIMER MUST BE USED TO PREPARE SURFACES PRIOR TO THE APPLICATION OF SEALANT.



SCUPPER WITH EPDM FLASHING

MAXIMUM WARRANTY: 20 YEARS



PS (PRESSURE SENSITIVE)
P&S (PEEL & STICK)
QA (QUICK APPLIED)

THERMOPLASTIC ROOFING SYSTEM

TPC-18.2T