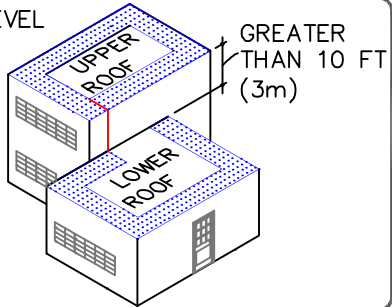


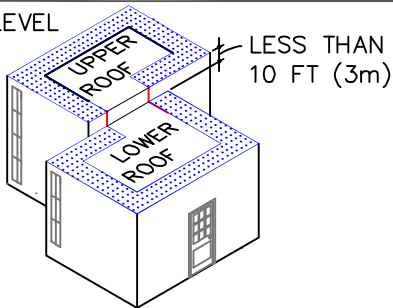
GUIDELINES FOR ROOF PERIMETER ZONES FOR MECHANICALLY ATTACHED ROOF SYSTEM

 PERIMETER ZONES

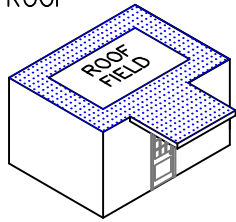
SAME LEVEL ROOF



SPLIT LEVEL ROOFS

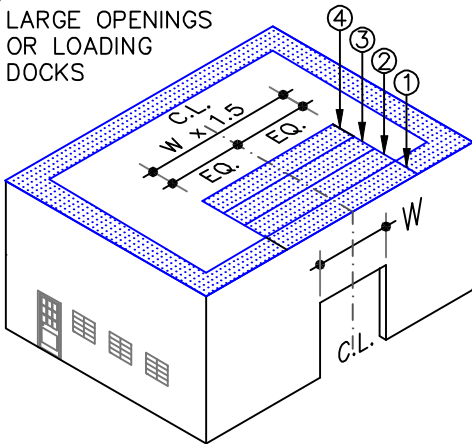


CANOPY ROOF



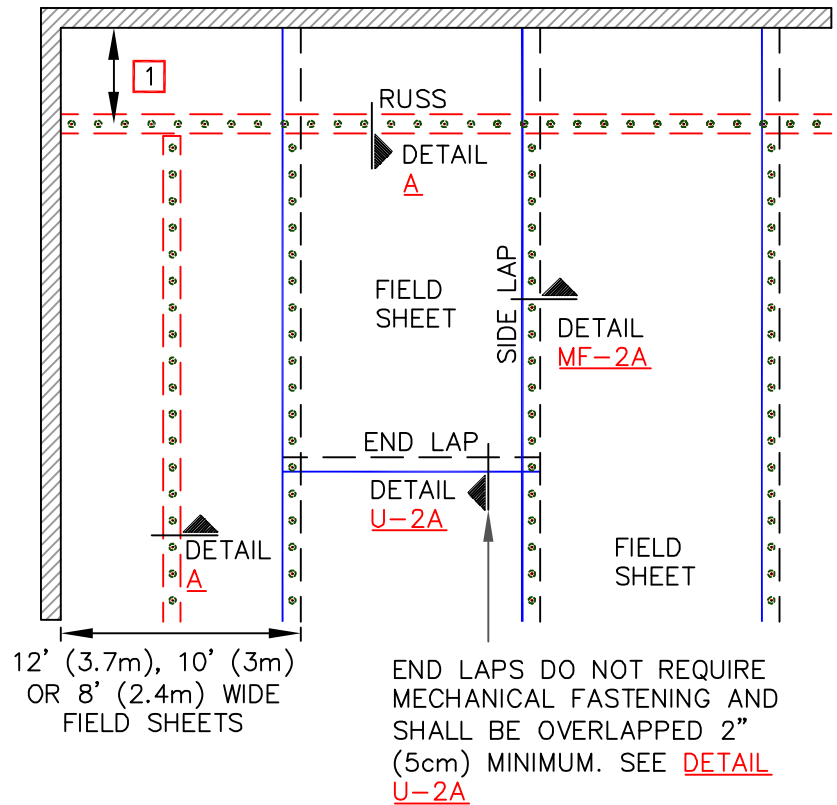
INSTALL PERIMETER SHEETS OVER THE ENTIRE OVERHANG (PROJECTION ROOF) AREA, EXTENDING ONTO THE MAIN ROOF DECK WHEN AT THE SAME LEVEL AS SHOWN.

LARGE OPENINGS OR LOADING DOCKS



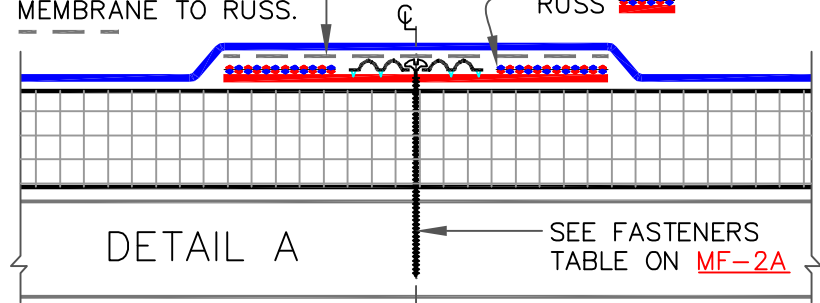
4 PERIMETER SHEETS CENTERED OVER LARGE OPENINGS

RUSS (REINFORCED UNIVERSAL SECUREMENT STRIP)



TPO PRIMER MUST BE APPLIED TO THE BACK SIDE OF MEMBRANE SURFACE PRIOR TO ADHERING MEMBRANE TO RUSS.

10" (25cm) WIDE TPO PRESSURE-SENSITIVE RUSS



NOTES:

1. RUSS SHALL BE POSITIONED 5' (1.5m) TO 6' (1.8m) FROM THE PERIMETER EDGE WHEN USING 10' (3m) OR 12' (3.7m) WIDE FIELD SHEETS. WHEN USING 8' (2.4m) WIDE FIELD SHEETS, RUSS SHALL BE POSITIONED 4' (1.2m) FROM THE PERIMETER EDGE.
2. REFER TO CARLISLE SPECIFICATIONS FOR REQUIRED NUMBER OF PERIMETER SHEETS, SHEET WIDTH AND MEMBRANE FASTENING SPACING.

MECHANICALLY FASTENED ASSEMBLY



MEMBRANE SECUREMENT WITH RUSS

MAXIMUM WARRANTY: 30 YEARS



DETAIL NO.

MF-2.1