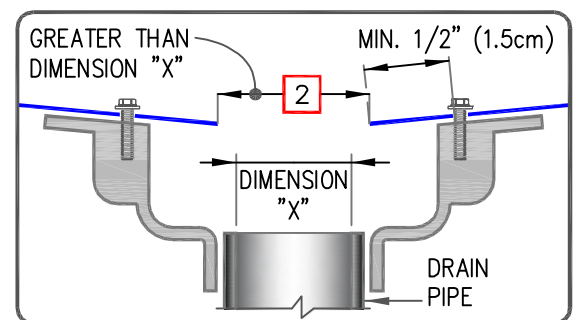


## NOTES:

1. ROOF DRAIN SIZE AND NUMBER OF DRAINS SHALL BE IN ACCORDANCE WITH THE LOCAL CODES.
2. THE HOLE IN THE MEMBRANE SHALL EXCEED THE DIAMETER OF THE DRAIN PIPE, BUT SHALL BE NO LESS THAN 1/2" (1.5cm) FROM THE ATTACHMENT POINTS OF THE DRAIN CLAMPING RING.
3. ALL BOLTS OR CLAMPS MUST BE IN PLACE TO PROVIDE CONSTANT COMPRESSION ON WATER CUT-OFF MASTIC.
4. REMOVE EXISTING LEAD, FLASHING MATERIAL & ENSURE THE DRAIN RING IS COMPLETELY CLEAN DOWN TO BARE METAL.
5. APPROXIMATELY 1/8" (0.5cm) DIAMETER BEAD OF CUT-EDGE SEALANT IS REQUIRED ON CUT EDGES OF REINFORCED TPO MEMBRANE.



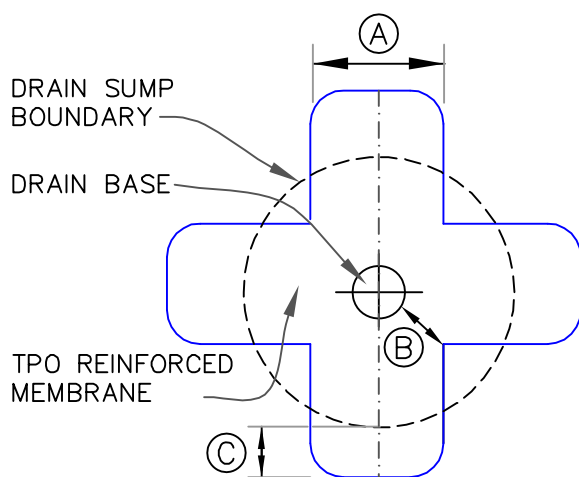
ROOF DRAIN: SUMP SLOPE GREATER THAN 3" TO ONE HORIZONTAL FOOT (OPTION 2), PAGE 1 OF 2

MAXIMUM WARRANTY: 30 YEARS

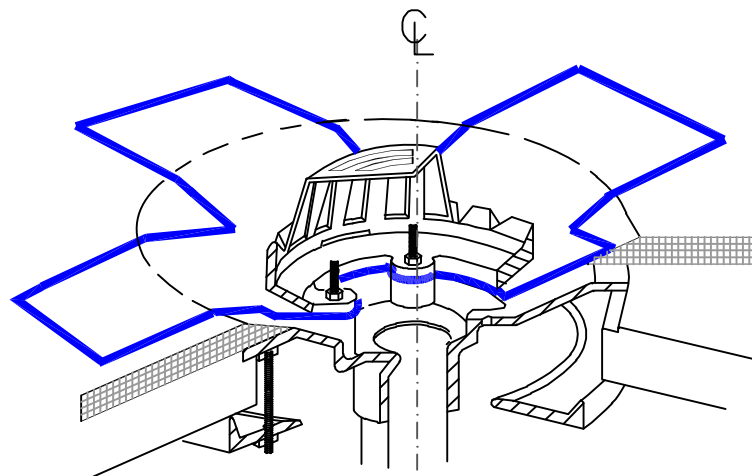


DETAIL NO.

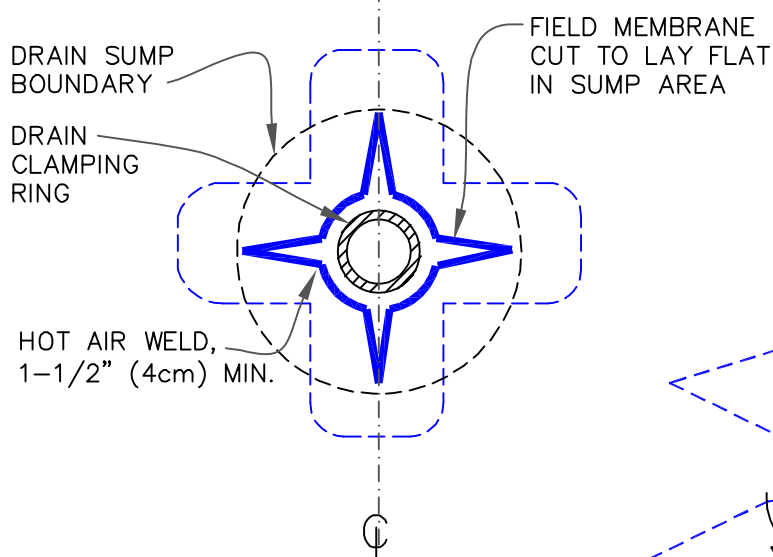
U-6C



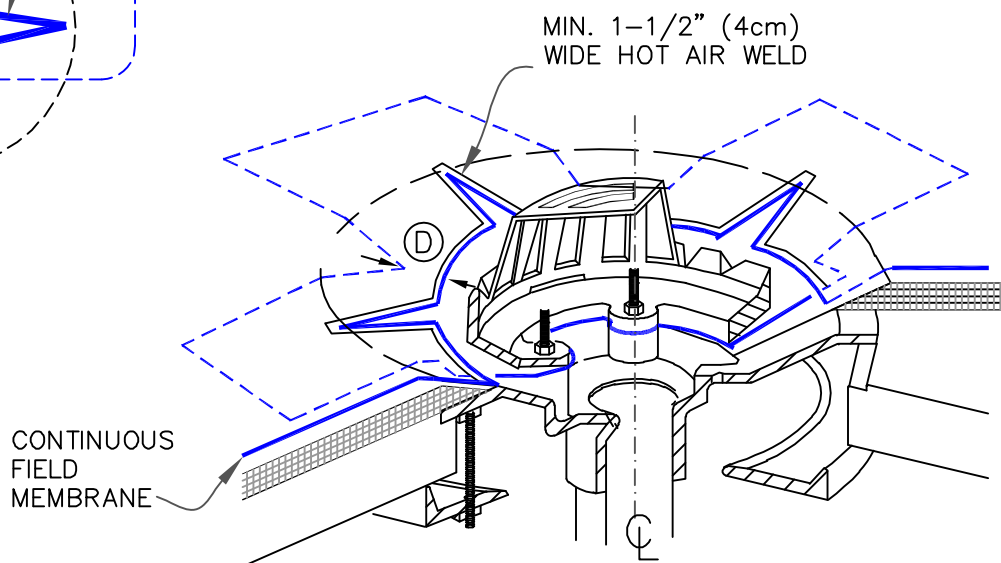
CUT SECTION OF TPO REINFORCED MEMBRANE AS SHOWN AND POSITION INTO DRAIN SUMP. EXTEND MEMBRANE OUT OF DRAIN SUMP APPROXIMATELY 6" (15cm) (ROUND CORNERS).



EXTEND TPO MEMBRANE ONTO MEMBRANE SECTION POSITIONED AT DRAIN SUMP AND CUT AS SHOWN TO LAY FLAT IN SUMP. HOT AIR WELD A MINIMUM OF 1-1/2" (4cm) COMPLETELY SURROUNDING AREA.



| DIMENSIONS |     | cm  |         |
|------------|-----|-----|---------|
| (A)        | 12" | 30  | MIN.    |
| (B)        | 6"  | 15  | MIN.    |
| (C)        | 6"  | 15  | APPROX. |
| (D)        | 3"  | 7.5 | MIN.    |



ROOF DRAIN: SUMP SLOPE GREATER  
THAN 3" TO 1" HORIZONTAL FOOT  
(OPTION 2), PAGE 2 OF 2

MAXIMUM WARRANTY: 30 YEARS



DETAIL NO.

U-6C