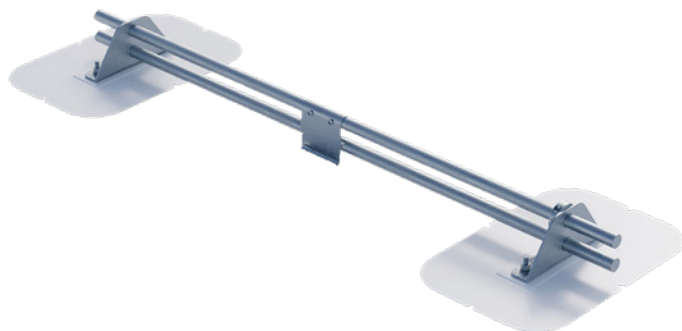


Anchor Products® Snow Retention System



Overview

The Anchor Products Snow Retention System is designed for use with Versico's single-ply roofing systems, providing a reliable, tested solution with exceptional strength. The system attaches to the roof using U3400 rooftop anchors and includes a range of prefabricated components such as brackets, pipes, end caps, end collars, snow restrictors, and all necessary hardware for assembly and attachment to the U-Anchors®.

Prefabrication allows for faster installation and more consistent performance compared to field-fabricated systems. By restraining snow movement, the system ensures snow is released from the roof in a safe, controlled manner. Optional restrictor plates can be installed on the top retention bar to extend closer to the roof surface, helping to minimize sliding snow during lighter accumulations that might otherwise pass beneath the lowest pipe.

Designed to withstand extreme loads, each system is third-party engineered to meet specific project requirements and environmental conditions.

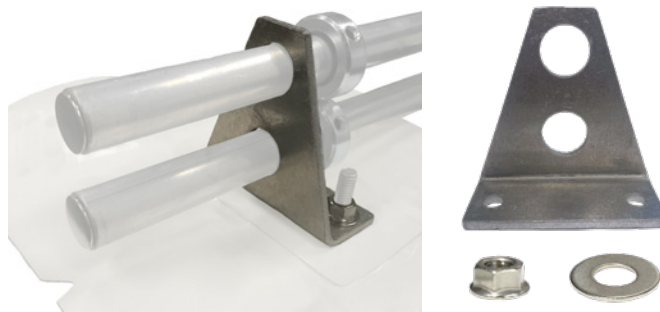
Features and Benefits

- Permanent, lightweight system with superior strength
- Secured with U3400 anchors that deliver industry-leading holding power
- High splice strength while accommodating thermal expansion and contraction
- Fully waterproof — no sealants, caulking, field-fabricated flashings, or compression seals required
- Exposed components and hardware made from stainless steel, aluminum, or other non-corrosive materials for long-lasting durability
- Quick, straightforward installation
- Custom colors available (additional charge and lead time apply)

System Components

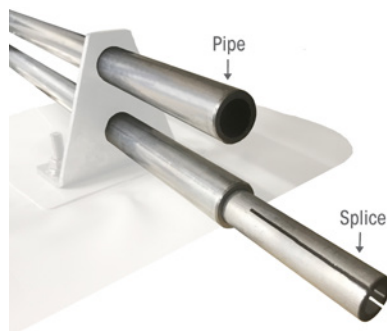
The Anchor Products Snow Retention System consists of multiple components specified by an engineer based on the project's design and site-specific requirements. The components listed below represent those commonly used in a typical snow retention installation.

Mounting Bracket and Hardware



The snow retention system is attached to the U3400 anchors using the mounting brackets along with the supplied washers and flange nuts. Tighten and torque the flange nuts to approximately 20 to 25 ft-lbs to ensure the brackets are properly secured.

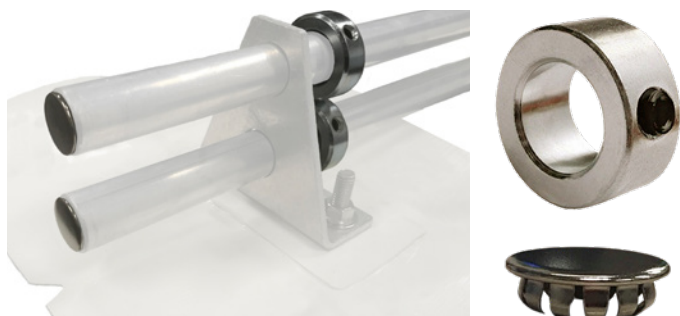
Retention Pipes and Splices



The Snow Retention Pipes have a 1" outside diameter and are supplied in 8' lengths. Insert the pipes into the mounting brackets. For runs longer than 8', splices are available to connect adjacent pipes; however, splices must not be located within 6" of a bracket. Continuous runs of snow retention pipe must not exceed 100'. For runs exceeding 100', introduce a short break and begin a new assembly along the same line to accommodate thermal expansion and contraction.

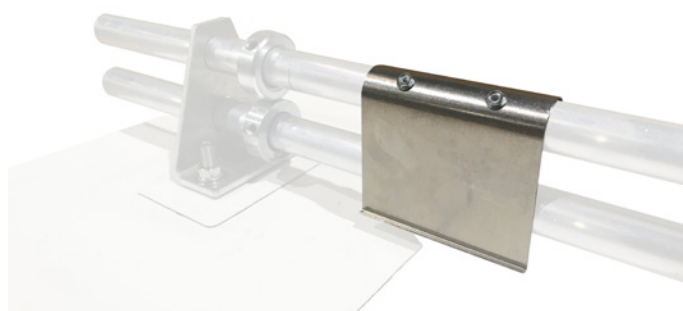
Anchor Products Snow Retention System

Pipe Collars and End Caps



The Snow Retention Pipes are secured in place with pipe collars, which are tightened onto the pipes using the provided set screws. Position each collar approximately 1" to 2" inside the first and last mounting brackets. The collars prevent the pipes from shifting or slipping out of the brackets. End caps are installed in the exposed pipe ends to provide a clean, finished appearance.

Restrictor Plate



Restrictor plates are an optional component installed on the top pipe of the snow retention system. Each plate extends downward beyond the bottom pipe, closer to the membrane, to help prevent smaller snowfalls from sliding beneath the system. The quantity and spacing of restrictor plates should be determined by the system designer.

Installation

FOR DETAILED INSTALLATION INSTRUCTIONS, PLEASE SEE THE VERSICO ANCHOR PRODUCTS SNOW RETENTION SYSTEM INSTALLATION GUIDE.

Precautions

- U3400 Anchors serve as the attachment points for the Snow Retention System brackets, transferring loads safely into the building structure. Always follow the project's engineering evaluation to ensure the correct type and quantity of fasteners are used for the specific application. Refer to Versico's U-Anchor Installation Guide for additional details.
- Continuous runs of snow retention pipe must not exceed 100'. For runs exceeding 100', introduce a short break and begin a new assembly along the same line to accommodate thermal expansion and contraction.
- Pipe splices must not be located within 6" of a bracket.
- Snow Retention System installations are typically performed on higher-sloped single-ply roofs, which can be slippery. Always prioritize safety; ensure installers use proper fall protection and are tied off appropriately to prevent injury.

Green Building Information

Pre-Consumer Recycled Content	0%
Post-Consumer Recycled Content	0%
Solar Reflectance Index (SRI)	N/A
Global Warming Potential (GWP)	N/A
Volatile Organic Compounds (VOC) Content	N/A
Manufacturing Location(s)	Haltom City, TX
Corporate Sustainability Report (CSR) Availability	Yes
Environmental Product Declaration (EPD) Availability	No

Anchor Products Snow Retention System

Typical Properties and Characteristics

Mounting Bracket and Hardware Kit

Mounting Bracket

Material Type	5052 Aluminum
Material Thickness	0.19"
Dimensions	4" L x 1.75" W x 4" H
Quantity per Box	10

Flange Nuts

Material Type	304 Stainless Steel
Material Thickness	3/8" – 16
Dimensions	0.74" L x 0.74" W x 0.34" H
Quantity per Box	20

Flat Washers

Material Type	304 Stainless Steel
Inner Diameter	0.415"
Outer Diameter	0.875"
Quantity per Box	20

Mounting Bracket and Hardware Kit Packaging Information

Box Dimensions	7" L x 7" W x 5" H
Weight	3.0 lbs.

Finishing Kit

Pipe Collar

Material Type	304 Stainless Steel
Inner Diameter	1.065"
Outer Diameter	1.75"
Dimensions	1.75" L x 0.627" W x 1.75" H
Quantity per Box	4

Pipe Collar Set Screws

Material Type	304 Stainless Steel
Thread Type	5/16" – 18
Set Screw Head	5/32
Quantity per Box	4

Pipe End Caps

Material Type	304 Stainless Steel
Outer Diameter	0.92"
Dimensions	0.92" L x 0.295" W x 0.92" H
Quantity per Box	4

Pipe Collar and Pipe End Cap Kit Packaging Information

Box Dimensions	7" L x 7" W x 5" H
Weight	1.1 lbs.

Restrictor Plate Kit

Restrictor Plate

Material Type	5052 Aluminum
Material Thickness	0.04"
Dimensions	4" L x 3.5" W x 1.125" H
Quantity per Box	10

Restrictor Plate Fasteners (Self-Tapping Screws)

Material Type	Zinc-Plated Steel
Fastener Head	5/16" Hex
Quantity per Box	20

Restrictor Plate Kit Packaging Information

Box Dimensions	6" L x 4" W x 4" H
Weight	1.2 lbs.

Pipe and Splice Kit

Pipe

Material Type	6061 Aluminum
Inner Diameter	0.75"
Outer Diameter	1"
Dimensions	96" L x 1" W x 1" H
Quantity per Box	10

Pipe Splice

Material Type	6061 Aluminum
Inner Diameter	0.5"
Outer Diameter	0.75"
Dimensions	6" L x 0.75" W x 0.75" H
Quantity per Box	10

Restrictor Plate Kit Packaging Information

Box Dimensions	96" L x 7" W x 7" H
Weight	66 lbs.

This data and information is intended as a guide and does not reflect the specification range for any particular property of these products.

The snow retention system is engineered by Anchor Products to include only the exact quantities required for each project. Partial box quantities of the materials listed above are also available, helping minimize excess materials and reduce jobsite waste.



A SINGLE SOURCE FOR SINGLE-PLY ROOFING

800.992.7663 • www.versico.com