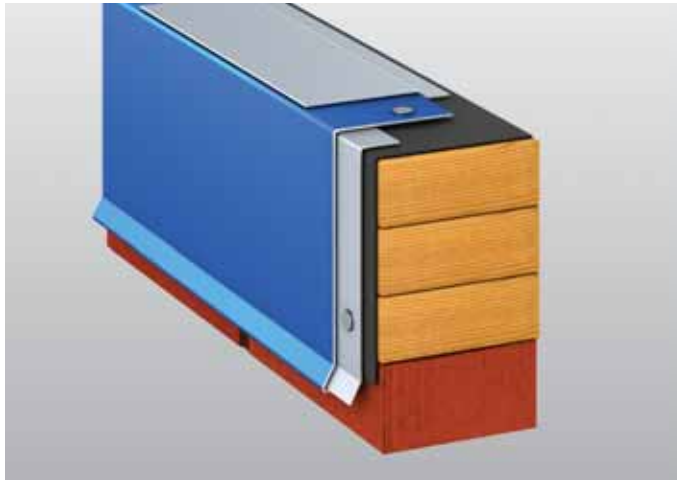


# SecurEdge™ 400 Drip Edge



## Overview

Carlisle's SecurEdge 400 Drip Edge system for single-ply roofs is a two-piece assembly that includes a continuous base and a decorative Drip Edge cover. Available in .040" (1.00 mm) formed aluminum and 24-gauge Kynar 500®-coated Galvalume steel, this product features two cleat options: a 22-gauge (G90) pre-punched cleat with fasteners spaced at 12" (304.8 mm) on center, or 24-gauge (AZ50) pre-punched cleat with fasteners spaced at 12" (304.8 mm) on center. SecurEdge 400 Drip Edge is available in 10' (3048 mm) cleat and cover lengths; concealed splice plates and fasteners are included with purchase.

## Features and Benefits

- » Terminates roof membrane to parapet walls
- » Allows for the use of high-torque screws without penetrating the top surface of the membrane
- » Pre-punched continuous cleat
- » Stock sizes for quick delivery
- » ANSI-SPRI ES-1 Tested
- » Mill finish aluminum and clear anodized finishes are available

## Installation

For complete installation instructions, refer to Carlisle specifications and details or visit [www.carlisesyntec.com](http://www.carlisesyntec.com).

## Quality Assurance

This product is tested per ANSI/SPRI Test Method RE-2 for Drip Edge. Drip Edge is certified by Carlisle to design pressures as indicated in current edition of SPRI's Wind Resistance Standard for Edge Systems Used with Low-Slope Roofing Systems. This product meets the International Building Code minimum requirement.

## Technical Services

Engineering and shop drawings, as well as long-form specifications and CAD details, are available from Carlisle. Product samples, detail sheets, color chips, and color charts are also available for submittal packages. For assistance with questions or submittals, contact Carlisle or your local manufacturer's representative.

### Specifications (22-gauge cleat)

Material	Face	Sustained Pressures
24-gauge	up to 6"	-390 psf (*)
0.040 Aluminum	up to 6"	-410 psf (*)

### Specifications (24-gauge cleat)

Material	Face	Sustained Pressures
24-gauge	up to 6"	-240 psf (*)
0.040 Aluminum	up to 6"	-250 psf (*)

\* Design Engineer must apply the Factor of Safety.

ADDITIONAL GAUGES - .050 and .063 aluminum and 22-gauge Galvalume are available upon request.