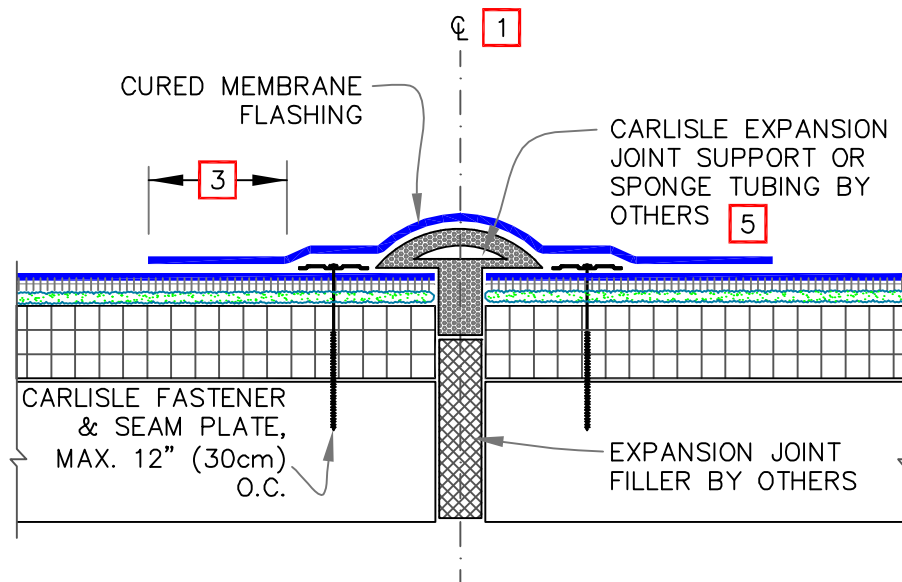


CAUTION

EPDM MEMBRANE SPLICES SHALL INCORPORATE 3"(7.5cm) WIDE FIELD APPLIED SecurTape FOR 20 & 25 YEAR WARRANTIES AND 6" (15cm) WIDE FIELD APPLIED SecurTAPE FOR PROJECTS WITH 30-YEAR WARRANTIES.



NOTES:

1. WHEN CARLISLE EXPANSION JOINT SUPPORT IS USED, WIDTH OF JOINT SHALL BE A MINIMUM OF 3/4" (2cm) AND SHALL NOT EXCEED 3" (7.5cm).
2. APPROXIMATELY 1/8" (0.5cm) DIAMETER BEAD OF CUT-EDGE SEALANT IS REQUIRED ON CUT EDGES OF REINFORCED TPO MEMBRANE.
3. MEMBRANE SPLICES SHALL BE COMPLETED USING MINIMUM 3" (7.5cm) WIDE SecurTAPE & PRIMER WITH EPDM MEMBRANE AND MINIMUM 1-1/2" (4cm) HOT AIR WELD WITH TPO/PVC.
4. WHEN USING 60 OR 80-MIL TPO AND 80-MIL PVC/KEE HP REINFORCED THERMOPLASTIC MEMBRANE FLASHING, APPLY A 4-1/2" (11cm) DIAMETER THERMOPLASTIC "T-JOINT" COVER AT ALL FIELD SPLICE INTERSECTIONS.
5. ALL EPDM SPLICE INTERSECTIONS MUST BE OVERLAID WITH A PRESSURE-SENSITIVE T-JOINT COVER. PRIOR TO DOING SO, APPLY LAP SEALANT ALONG THE EDGE OF THE MEMBRANE SPLICE (UNDER THE 6"x6" (15cm X 15cm) T-JOINT COVER) COVERING THE EXPOSED SPLICE TAPE 2" (5cm) IN EACH DIRECTION FROM THE SPLICE INTERSECTION. PROJECTS WITH 30-YEAR WARRANTIES OR WHEN USING 145-MIL MEMBRANE, INTERSECTIONS MUST BE OVERLAID WITH TWO LAYERS OF PRESSURE-SENSITIVE ELASTOFORM FLASHING. THE BOTTOM LAYER SHALL BE 6"x6" (15cm X 15cm) COVERED WITH A 12"x12" TOP LAYER (30cm X 30cm). BOTH LAYERS SHALL BE CENTERED OVER THE SPLICE INTERSECTION AND SEALED WITH CONTINUOUS LAP SEALANT, [REFER TO FB-2](#) DETAILS.
6. ROOF MEMBRANE SHALL NOT BE ADHERED OVER THE EXPANSION JOINT SUPPORT OR SPONGE TUBING.
7. FOR EPDM APPLICATIONS, USE TWO LAYERS OF PRESSURE-SENSITIVE ELASTOFORM FLASHING WITH EACH LAYER 3" (7.5cm) LARGER THAN THE PREVIOUS LAYER IN ALL DIRECTIONS FOR EXPANSION JOINT INTERSECTIONS BETWEEN EXPANSION JOINTS TO WALL OR EDGING.

	DECK-TO-DECK EXPANSION JOINT MAXIMUM WARRANTY: 30 YEARS	<div> </div> DETAIL NO. FB-3A.1 FLEECEBACK ADHERED
--	--	--