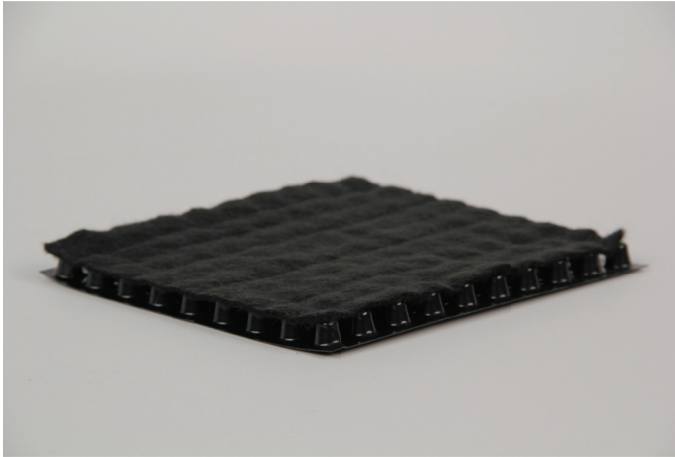


ROOF GARDEN

MiraDRAIN® 9800



Overview

Carlisle's MiraDRAIN 9800 is a high performance drainage composite consisting of a heavy-weight nonwoven filter fabric bonded to the individual dimples of a molded polypropylene core. The filter fabric provides superior filtration, preventing small particles from clogging the drainage channels. MiraDRAIN 9800 is for use in high-flow, high-compressive strength, horizontal drainage applications where maximum filtration is required. When placed over an approved protection fabric, MiraDRAIN 9800 is ideal for planter and Roof Garden applications.

Features and Benefits

- » Available in rolls 4' wide x 50' long (1.22 m x 15.24 m)
- » Provides drainage in Carlisle's Roof Garden Systems
- » Non-clogging drainage performance
- » High compressive strength that withstands overburden stresses

Installation

1. Carlisle's MiraDRAIN 9800 is installed on top of Carlisle's HP Mat or 200V/300HV Protection Fabric.
2. The filter fabric should be facing up. Overlap the filter fabric in the direction of water flow.
3. In windy conditions, provide temporary ballast to prevent wind disturbance.
4. Cover MiraDRAIN 9800 with Carlisle approved overburden materials.

Contact Carlisle for specific installation information.

Precautions

- » Limit UV exposure by covering within 30 days of installation.
- » Any panels that are damaged during installation should be replaced by the installer.

Typical Properties and Characteristics

Property	Test Method	Typical Value
Thickness	ASTM D1777	0.40 in (10.16 mm)
Compressive Strength	ASTM D1621	18,000 psf (862kPa)
Reservoir Capacity	TCM-0207	10 in ³ /ft ³ (1,775 cm ³ /m ³)
Maximum Flow Rate ¹	ASTM D4716	17.5 gpm/ft (219 lpm/m)

Filter Fabric

Apparent Opening Size	ASTM D4751	80 US Std. Sieve (0.18 mm)
Water Flow Rate	ASTM D4491	95 gpm/ft ² (3,870 l/min/m ²)
Grab Tensile Strength	ASTM D4632	205 lbs (912 N)

¹In plane flow rate at gradient of 1.0.

Typical properties and characteristics are based on samples tested and are not guaranteed for all samples of this product. This data and information is intended as a guide and does not reflect the specification range for any particular property of this product.

LEED® Information

Pre-consumer Recycled Content	4%
Post-consumer Recycled Content	0%
Manufacturing Location	Madison, GA
Solar Reflectance Index	N/A