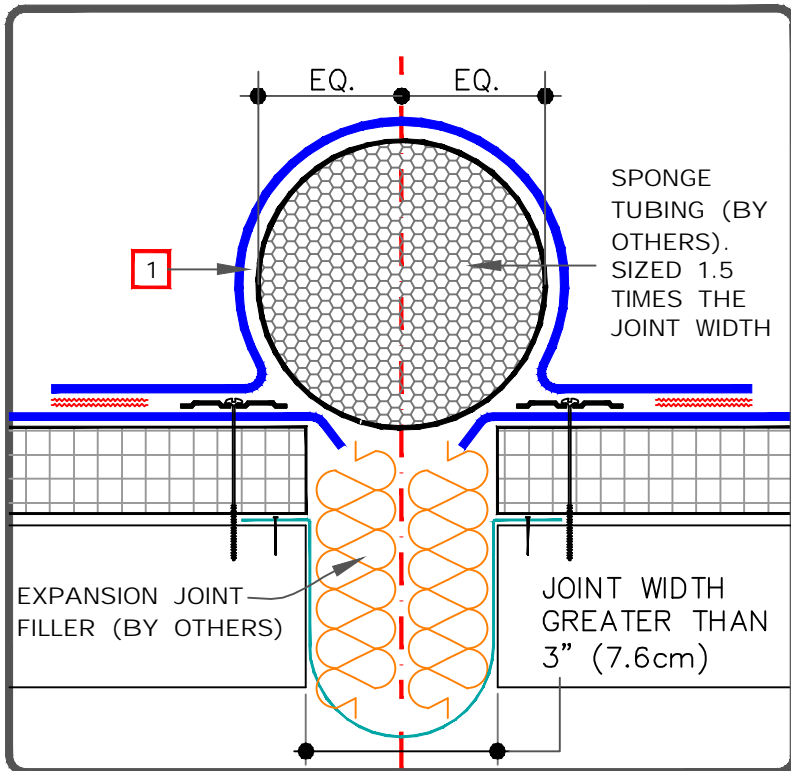


NOTES:

- MEMBRANE FLASHING SHALL NOT BE ADHERED OVER THE SPONGE TUBING (EXPANSION JOINT SUPPORT).
- WHEN THE EXPANSION JOINT INTERSECTS WITH A COATED METAL DRIP EDGE, THEN COATED METAL SHOULD BE GAPPED AND THE [U-1B](#) DETAIL BE FOLLOWED. DRIP EDGE BY OTHERS SHOULD ALSO BE GAPPED.

**FASTENER TYPES ON MECHANICALLY FASTENED ROOF ASSEMBLY**

DECK TYPE	OPTION	FASTENER	PLATE
STEEL OR WOOD	A	HP- X	PIRANHA
	B	HP- XTRA	PIRANHA XTRA
STRUCTURAL CONCRETE	A	CD- 10	PIRANHA
	B	HD 14- 10	PIRANHA



DECK-TO-DECK ROOF EXPANSION JOINT

MAXIMUM WARRANTY: 30 YEARS



DETAIL NO.

U- 3A

U (Universal Detail)