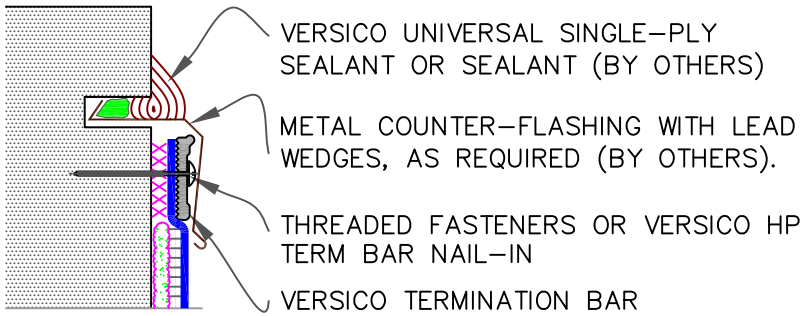
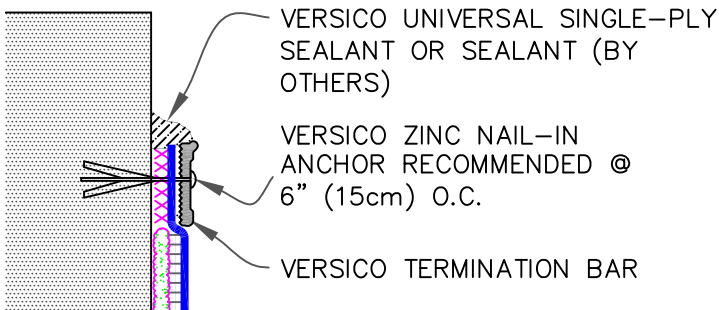


9A

MECHANICAL TERMINATION WITH
COUNTER FLASHING**WARRANTY
UP TO 30 YEARS****SEE INSET
A**

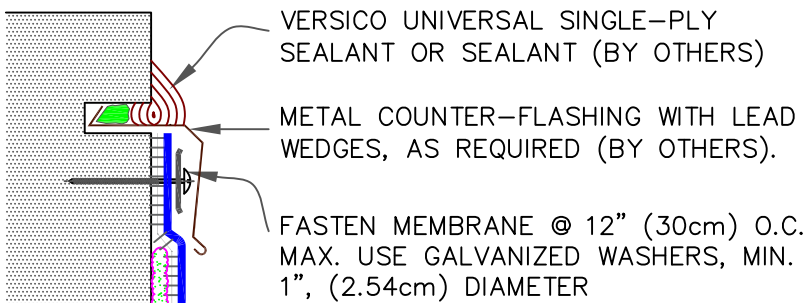
9B

MECHANICAL TERMINATION

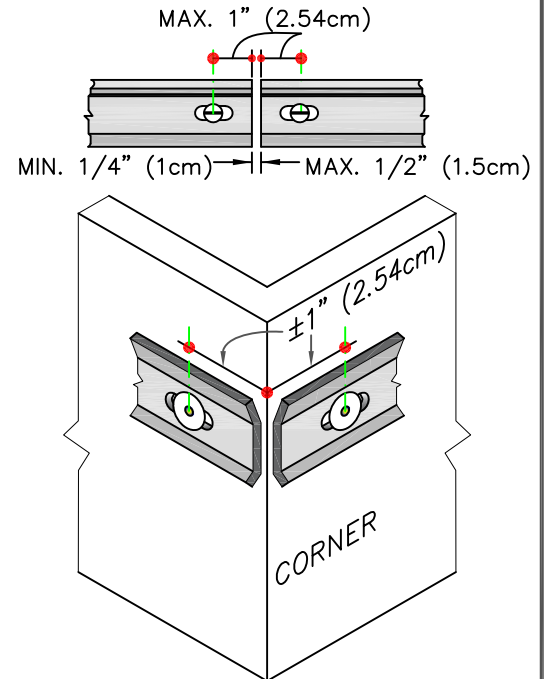
**WARRANTY
UP TO 20 YEARS****SEE INSET
A**

9C

COUNTER FLASHING TERMINATION

**WARRANTY
UP TO 10 YEARS**

xxx WATER CUT-OFF MASTIC- MUST BE HELD UNDER CONSTANT COMPRESSION.

INSET A

NOTES:

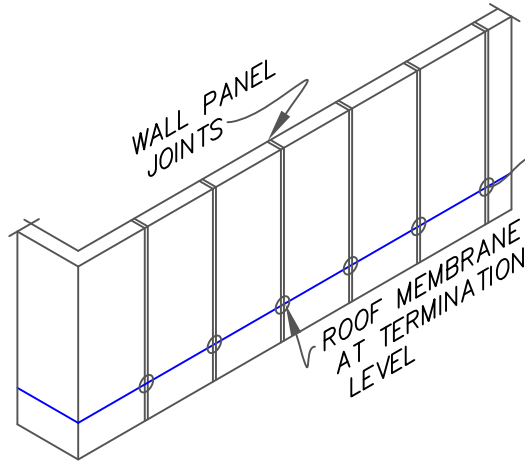
1. APPLY ON HARD SMOOTH SURFACE ONLY; NOT FOR USE ON EXPOSED WOOD.
2. DO NOT WRAP TERMINATION BAR AROUND CORNERS.
3. DETAIL 9D ON PAGE 2 OF 3 MUST BE USED AT VERTICAL JOINTS IN PANEL WALLS.

NOTE:

1. WHEN MECHANICAL FASTENERS ARE USED TO PENETRATE THE METAL COUNTER-FLASHING, USE EPDM WASHERS, APPLY WATER CUT-OFF MASTIC UNDER THE COUNTER-FLASHING OR CAULK THE FASTENER HEADS.

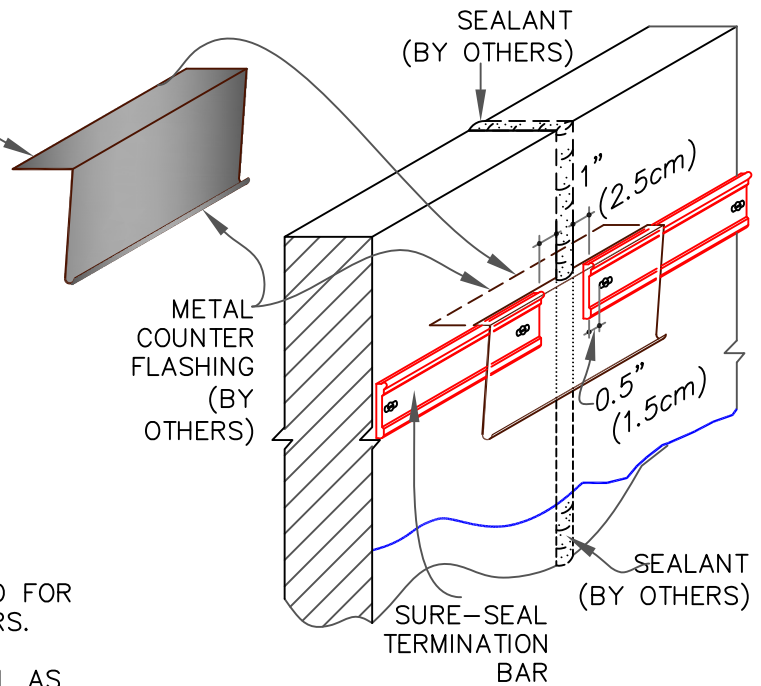
9D

MECHANICAL TERMINATION AT VERTICAL JOINTS



NOTES:

1. THIS DETAIL IS RECOMMENDED FOR ANY PROJECT REGARDLESS OF WARRANTY.
2. CONTINUOUS COUNTER FLASHING REQUIRED FOR WARRANTY PROJECTS EXCEEDING 20-YEARS.
3. VERTICAL JOINTS IN THE PRE-CAST PANEL AS WELL AS ALL GAPS AT THE JUNCTION OF THE TILT-UP PANEL AND ROOF DECK MUST BE FULLY SEALED TO PREVENT AIR INFILTRATION.
4. APPLY ON HARD SMOOTH SURFACE ONLY.

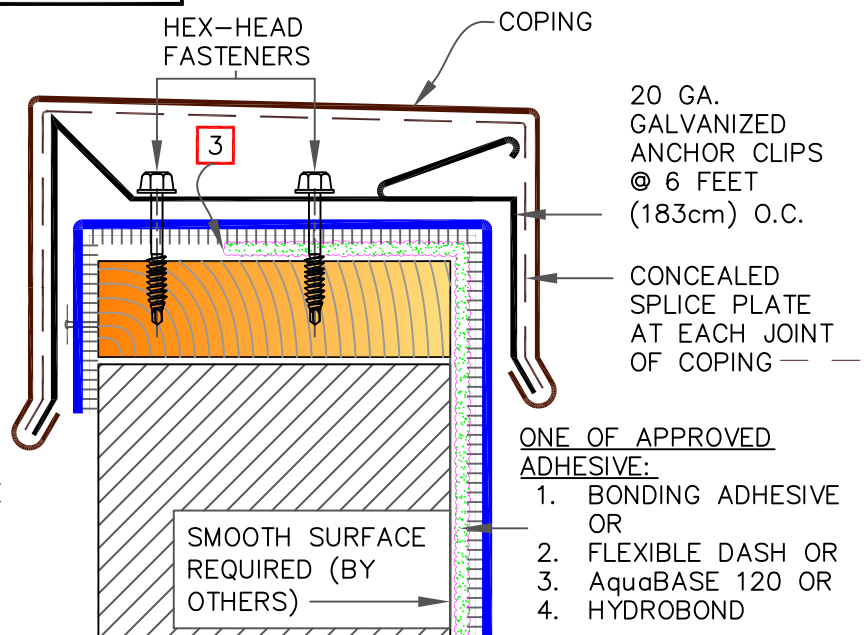


9E

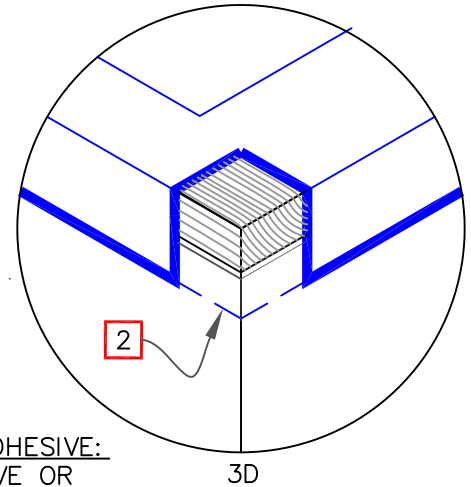
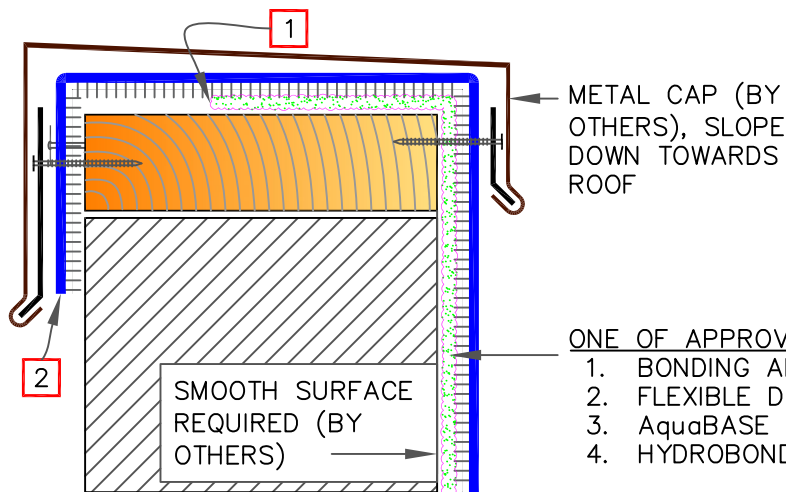
VERSITRIM & VERSITRIM 300 COPINGS

NOTES:

1. MEMBRANE MUST BE EXTENDED AT CORNERS TO PROVIDE COMPLETE COVERAGE OF THE TOP WALL SURFACE. SEE 9F ON PAGE 3 OF 3.
2. REFER TO VERSITRIM COPING INSTALLATION INSTRUCTION MANUAL FOR STEP-BY-STEP INSTRUCTION PROCEDURES.
3. STOP ADHESIVE AT APPROPRIATE DISTANCE TO AVOID STAINING ON EXTERIOR FACE OF WALL. EXTEND THE MEMBRANE DOWN & TEMPORARILY SECURE WITH CAPPED NAILS AT 12" (30.5cm) O.C. ENSURE SEAMS ARE SEALED.



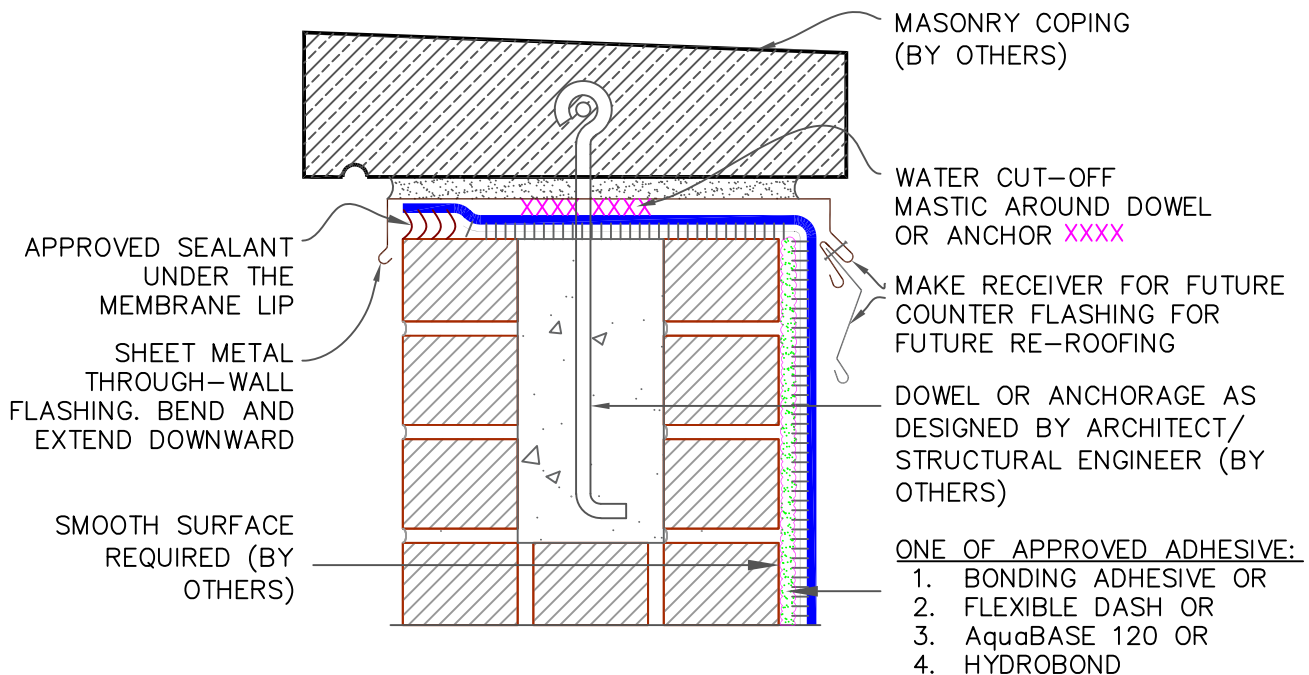
9F SHEET METAL COPING (BY OTHERS)



NOTES:

1. STOP ADHESIVE AT APPROPRIATE DISTANCE TO AVOID STAINING ON EXTERIOR FACE OF WALL. EXTEND THE MEMBRANE DOWN & SECURE WITH CAPPED NAILS AT 12" (30.5cm) O.C. ENSURE SEAMS ARE SEALED.
2. EXTEND THE MEMBRANE BELOW THE JOINT. AT CORNERS, MEMBRANE MUST BE EXTENDED TO PROVIDE COMPLETE COVERAGE OF WALL SURFACE.

9G MASONRY COPINGS (BY OTHERS)



XXX WATER CUT-OFF MASTIC- MUST BE HELD UNDER CONSTANT COMPRESSION.