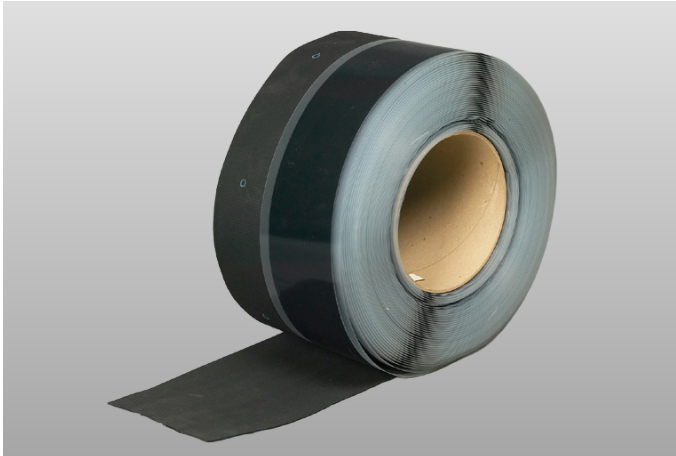


# Pressure-Sensitive RUSS



## Overview

Carlisle's Sure-Seal® EPDM Pressure-Sensitive (PS) RUSS is a nominal 45-mil (1.1 mm) reinforced EPDM membrane strip with a nominal 30-mil (.75 mm) cured EPDM splice tape laminated along one or both edges. Sure-Seal available in 6" (150 mm) total width, the adhesive strips are 3" (75 mm) wide. Sure-Seal also available in 9" (225 mm) total width.

6" PS RUSS has pre-applied splice tape along one edge and can be installed horizontally or vertically.

9" PS RUSS has pre-applied splice tape along both edges and can only be installed horizontally.

Please note: 6" PS RUSS cannot be used in the field of the roof on mechanically fastened roofing systems. 9" PS RUSS must be used in the field of the roof on mechanically fastened systems.

## Features and Benefits

- » 6" PS RUSS provides added membrane perimeter securement at walls, curbs, and expansion joints
- » 9" PS RUSS is used for membrane securement in the field of the roof on mechanically fastened systems

## Installation: 6" PS RUSS

1. Unroll and position PS RUSS horizontally or vertically in the angle change with the pre-applied tape lying horizontally and facing up.
2. Position 2" Seam Fastening Plates or 2" Polymer Seam Plates 1/8" to 3/4" (3 to 19 mm) from the angle change – 12" (305 mm) on center maximum – and secure with the appropriate Carlisle fastener. Do not fasten plates over the product's release liner, as this will cause the liner to tear when removed.

3. Remove all foreign material: The adhesive on the PS RUSS will not adhere to dusted or dirty surfaces. Remove any dust or foreign material by brooming and/or wiping with a clean, dry rag or Carlisle HP Splice Wipe. The use of Weathered Membrane Cleaner may be necessary. Allow the cleaner to dry thoroughly before proceeding.
 

Note: Permeation-resistant gloves (that meet ANSI/ISEA 105-2005) are required for hand protection when cleaners or primers are being used.
4. Apply HP-250 or Low-VOC EPDM Primer to the back of the field membrane.
5. Allow the primer to properly flash off until it does not transfer to a dry finger touch. Use hand pressure to install the field membrane to the PS RUSS as soon as the primer flashes off to minimize potential dust contamination and promote adhesion in colder weather.
6. Pull the field membrane back to expose the unadhered portion of the PS RUSS. Apply Carlisle Bonding Adhesive to the deck membrane, exposed PS RUSS, and parapet wall.
7. Once the bonding adhesive has properly flashed off, roll membrane to the angle change and crease. Roll the membrane up the wall and broom for optimal adhesion.
8. Roll the entire 6" (152 mm) width of the PS RUSS splice area with a 2" (51 mm)-wide roller, using positive pressure.

## Installation: 9" PS RUSS (Field of Roof)

1. Unroll and position PS RUSS in the field of the roof with pre-applied tape facing up.
2. Position 2" Polymer Seam Fastening Plates – 6" (152 mm) or 12" (302 mm) on center maximum – along the center line portion of the PS RUSS and secure with a Carlisle fastener. Do not fasten plates over the product's release liner, as this will cause the liner to tear when removed.
3. The entire surface where the PS RUSS will be applied must be cleaned and primed. The adhesive on the PS RUSS will not adhere to dusted/dirty surfaces. Remove any dirt or dust resulting from plate installation by wiping with a clean rag. If there is a heavy layer of dirt present, clean the splice area thoroughly with Weathered Membrane Cleaner.
4. Apply HP-250 or Low-VOC EPDM Primer to the back of the field membrane.
5. Allow the primer to properly flash off until it does not transfer to a dry finger touch. Remove the release liner from the tape adhesive on the PS RUSS, pulling it parallel to the roof deck. Use hand pressure to install the field membrane immediately after the primer flashes off to minimize potential dust contamination and promote adhesion in colder weather.
6. Roll the entire 9" (228 mm) width of the PS RUSS splice area with a 2" (51 mm)-wide roller, using positive pressure.

*Review Carlisle specifications and details for complete installation information.*

# Pressure-Sensitive RUSS

## Precautions

- » Avoid prolonged contact with skin. In case of contact with skin, thoroughly wash affected area with soap and water.
- » Prolonged jobsite storage in temperatures of 90°F (32° C) and higher will affect product shelf life.
- » In warm, sunny weather, keep PS RUSS in the box, in a shaded area, until ready to use.
- » Storage and use of PS RUSS at temperatures below 40°F (4°C) will result in a loss of adhesive tack, and, in extreme cases, will result in no bond to the substrate. Overnight storage must be available to keep the temperature of the PS RUSS at a minimum of 60°F (15°C). Hot boxes for jobsite storage must be provided to maintain a minimum product temperature of 40°F (4°C).
- » Store PS RUSS in a dry area.
- » Due to solvent flash-off, condensation may form on freshly applied primer when the ambient temperature is near the dew point. If condensation develops, the application of primer and installation of PS RUSS must be discontinued, as proper adhesion will not be achieved. Allow the primer to dry and apply a thin freshener coat of primer to the previously coated surface when conditions allow.
- » Carlisle fasteners and Seam Fastening Plates/Polymer Seam Plates must be used when installing PS RUSS. Refer to Carlisle specifications and details for appropriate fastening plates and fasteners.
- » PS RUSS is intended for use with black Sure-Seal and Sure-Tough™ membranes. Using this product in conjunction with Sure-White® membrane will result in discoloration of the white membrane surface over time.
- » In order to achieve proper adhesion, the following steps must be followed when installing PS RUSS at temperatures below 40°F (4°C).
  - a. After the primer has been applied and properly flashed off, install the membrane over the PS RUSS. Heat the top of the membrane directly over the tape with a hot-air gun and immediately roll with a hand roller. The heated surface should be very hot to the touch of bare skin. Take care not to burn or blister the membrane.
- » KEEP OUT OF THE REACH OF CHILDREN.

## Typical Properties and Characteristics

	6" RUSS	9" RUSS
Base	Membrane-EPDM (Polyester Reinforced) Adhesive-Synthetic Rubber	Membrane-EPDM (Polyester Reinforced) Adhesive-Synthetic Rubber
Roll Size	6" x 100' (150 mm x 30 m)	9" x 100' (225 mm x 30 m)
Thickness	EPDM – 45-mil (1.1 mm) Tape – 30-mil (.75 mm)	EPDM – 45-mil (1.1 mm) Tape – 30-mil (.75 mm)
Packaging	200 lf./ctn. (60 m) 2 rolls	100 lf./ctn. (30 m) 1 roll
Net Wt. per carton	38 lbs (17 kg)	33 lbs (15 kg)
Shelf Life	1 year	1 year

Typical properties and characteristics are based on samples tested and are not guaranteed for all samples of this product. This data and information is intended as a guide and does not reflect the specification range for any particular property of this product.

## LEED® Information

Pre-consumer Recycled Content	2% (Sure-Seal Only)
Post-consumer Recycled Content	0%
Manufacturing Location	Greenville, IL
Solar Reflectance Index (SRI)	N/A