

OPTIONAL

REFER TO DETAIL CS 1.2.1 FOR ADDITIONAL INFORMATION. WHERE UPPER ROOF IS BALLASTED ROOF, REFER TO CARLISLE SYNTec, INC. FOR REVIEW OF UPPER EDGE DETAIL.

3" WIDE SECURTAPE

CARLISLE ROOF MEMBRANE

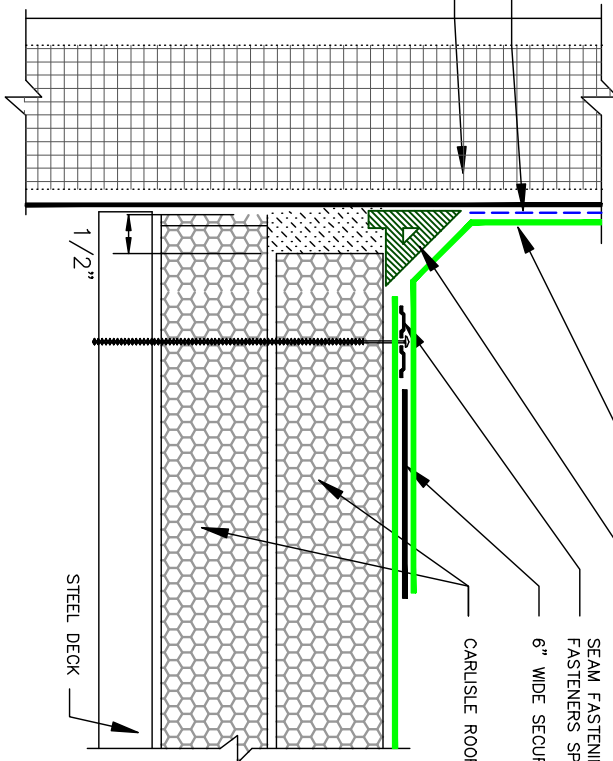
CARLISLE EXPANSION JOINT SUPPORT, WHEN REQUIRED

SEAM FASTENING PLATE & FASTENERS SPACED 12" O.C.

6" WIDE SECURTAPE

CARLISLE ROOF INSULATION

BONDING ADHESIVE
INSULATED WALL
PANEL (BY OTHERS)



1/2"

STEEL DECK

- NOTES:
1. ENSURE AIR INFILTRATION FROM OUTSIDE IS COMPLETELY RESTRICTED.
 2. ENSURE THE VERTICAL JOINTS OF ALL INSULATED WALL PANELS ARE SEALED (BY OTHERS).

DETAIL PROVIDED COURTESY OF
GROUP 4 MATERIALS, INC.
BROOKFIELD, WISCONSIN



Carlisle Syntec Incorporated

COLD STORAGE ENVELOPE IWP: COVERED RISING WALL, DECK-TO-WALL EXP. JOINT

CS 3.4.2

COLD STORAGE DETAILS

XXXXXXX	SURE-SEAL WATER CUT-OFF MASTIC
	FOAM-IN-PLACE INSULATION