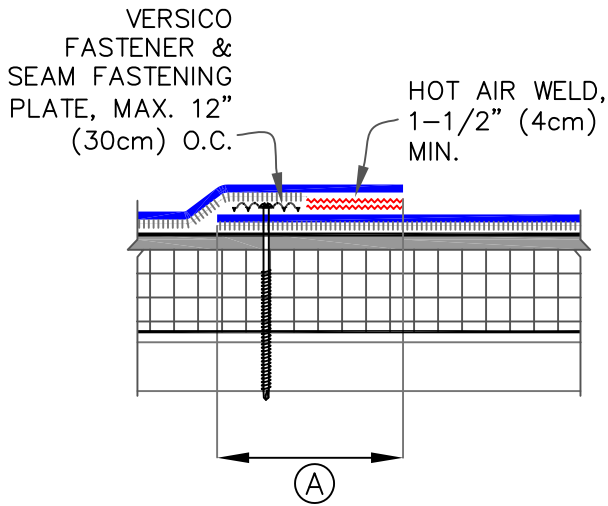
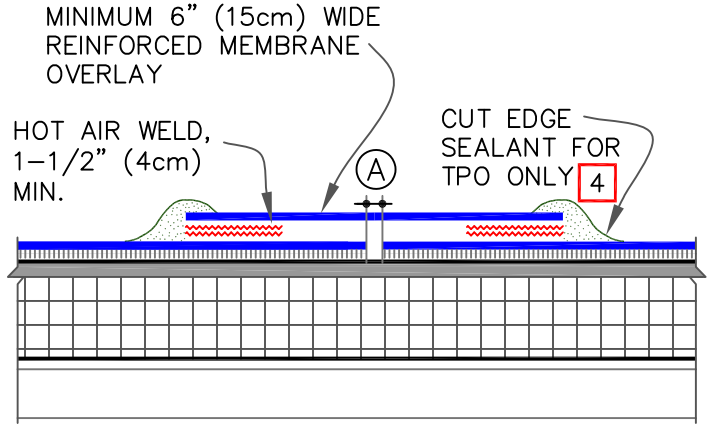


MEMBRANE SPLICE

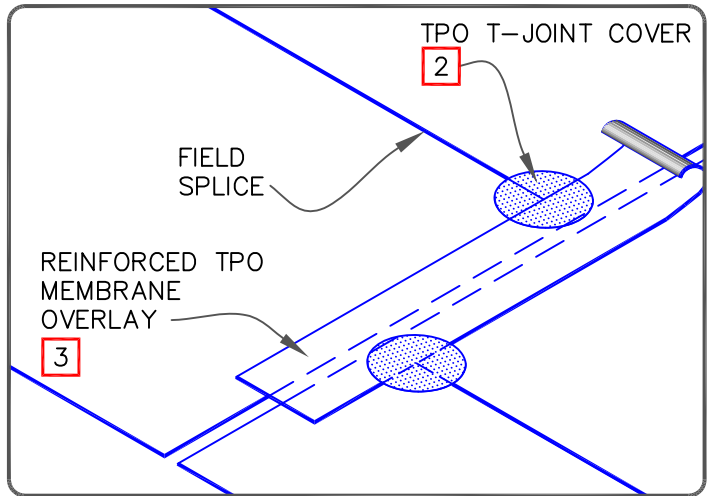
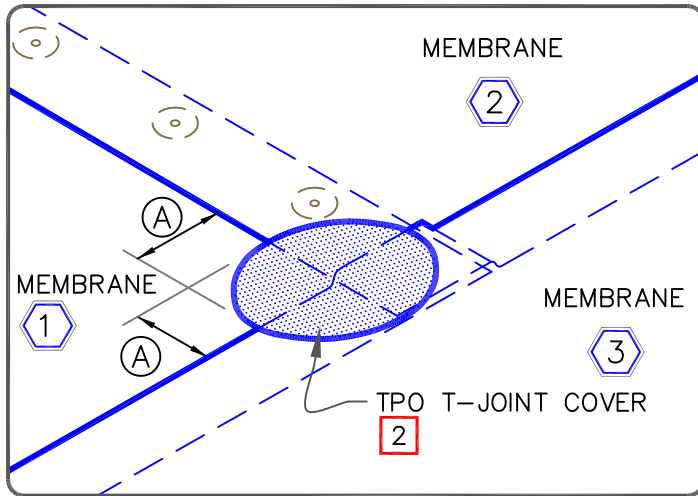


DIMENSIONS	cm	
(A) 5-1/2"	14	

END LAP SPLICE



DIMENSION	cm	
(A) 1"	25	MAX.



NOTES:

1. REFER TO VERSICO SPECIFICATIONS FOR REQUIRED FASTENERS AND FASTENING DENSITY.
2. WHEN USING 135 OR 155-MIL AC TPO MEMBRANE, APPLY A 4-1/2" (11cm) DIAMETER TPO "T-JOINT" COVER AT ALL FIELD SPLICE INTERSECTIONS.
3. WHEN USING 60 OR 80 MIL REINFORCED TPO MEMBRANE OVERLAY, INTERSECTIONS BETWEEN SPLICES MUST BE OVERLAID WITH A 4-1/2" (11cm) DIAMETER TPO "T-JOINT" COVER, AS SHOWN.
4. APPROXIMATELY 1/8" (0.5cm) DIAMETER BEAD OF CUT-EDGE SEALANT IS REQUIRED ON CUT EDGES OF REINFORCED TPO MEMBRANE.



AC TPO MECHANICALLY ATTACHED MEMBRANE & END LAPS

→ AC MEMBRANE OR KEE HP
 → ASPHALT/COLD APPLIED
 → APPROVED SUBSTRATE
 0 → SEE NOTE(S)

VERSIFLEECE AC OR KEE HP
 AC-MA2