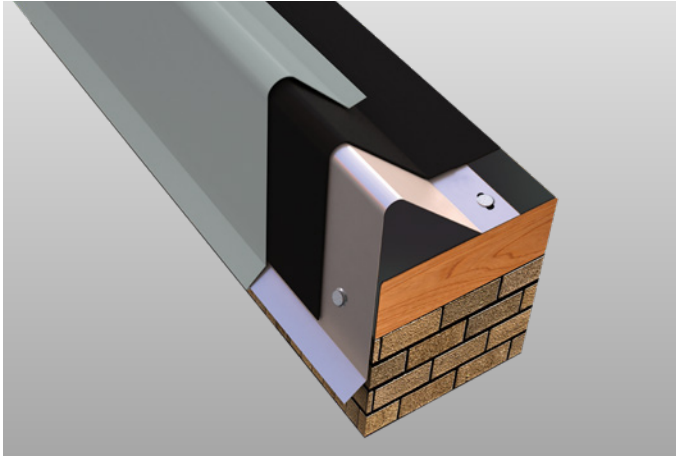


VersiTrim™ Crimp-On Canted Fascia



Overview

Versico's VersiTrim Crimp-On Canted Fascia uses a crimping method for securement for installers who prefer a more traditional approach to edge flashing details. It features dual attachment points on both the face and roof deck to allow for added flexibility when accommodating roof irregularities. With no exposed fasteners and no unsightly cover plates, VersiTrim Crimp-On Canted Fascia will complement the building's aesthetics while also being easy to install at a more competitive price than snap-on alternatives.

Features and Benefits

- No need for the stripping-in or heat-welding that are typical with other systems
- Manufactured in 12' lengths with pre-punched fastening holes in the 24GA galvanized waterdam to ensure correct placement and spacing of provided fasteners during installation
- Factory-fabricated miters and accessories ensure a proper fit and provide a cleaner appearance while eliminating the need for field fabrication
- ANSI/SPRI/FM 4435/ES-1 tested to comply with International Building Code requirements
- Factory Mutual approved for wind uplift protection
- Miami-Dade approved to comply with the High Velocity Hurricane Zone of the Florida Building Code

Installation

For complete installation instructions, refer to Versico specifications and details or visit www.metalera.com/brands/versico.

Finishes

- Natural mill-finish aluminum
- Pre-finished Kynar® standard and low gloss
- Premium metallic Kynar
- Anodized aluminum – clear, dark bronze, and black
- Drexlume – acrylic coated galvalume
- HDG90 galvanized steel
- Custom post-painted Kynar finishes available upon request
- Please consult color chart for color and gauge/thickness availability, non-stock combinations require minimum order and extended lead time

Quality Assurance

Tested per ANSI/SPRI/FM 4435/ES-1 Test Methods RE-1 and RE-2 for evaluation of membrane securement strength. Fascia shall be certified by Versico to design pressures as indicated in current edition of ANSI/SPRI ED-1 Design Standard for Edge Systems Used with Low Slope Roofing Systems. Meets requirements of the International Building Code. Florida Building Code approved (with cleat).

Technical Services

Engineering and shop drawings, as well as long-form specifications and CAD details, are available from Versico. Product samples, detail sheets, color chips, and color charts are also available for submittal packages. For personal assistance with questions or submittals, contact Versico or your local manufacturer's representative.

Specifications

Face Heights	5" 6.5" 8" 9.5" 11" 12.5"
Cover Materials	22GA Steel 0.040" Aluminum 0.050" Aluminum 0.063" Aluminum

Warranty

Versico's Crimp-On Canted Fascia is warranted in conjunction with the roofing system, in an edge-to-edge warranty up to 30 years with 100-mph windspeeds. A non-prorated 35-year Kynar finish warranty is also available.



A SINGLE SOURCE FOR SINGLE-PLY ROOFING

800.992.7663 • www.versico.com