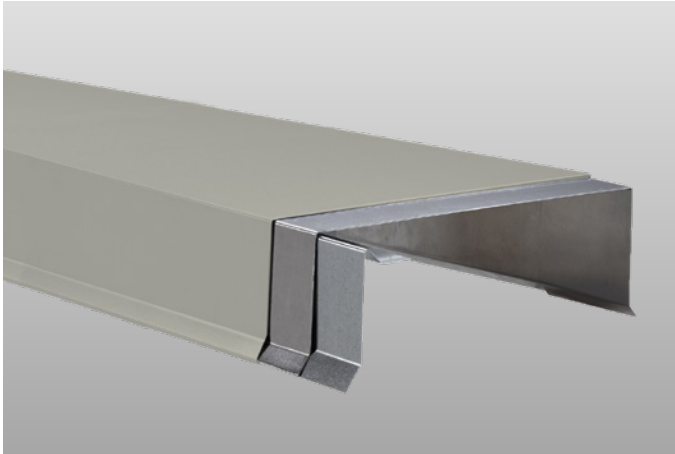


# SecurEdge™ METAL

## One Coping



### Overview

Carlisle's SecurEdge One Coping offers quick-to-ship convenience and economical pricing. The product is ANSI/SPRI/FM 4435/ES-1 tested and is manufactured in 12' lengths with fasteners provided for quicker installation, lower costs, and tested protection against high wind events.

### Features and Benefits

- » Provided concealed splice plates prevent moisture migration
- » Manufactured in convenient 12' lengths with pre-punched fastening holes in 22GA continuous front cleat to ensure proper attachment of provided fasteners
- » Factory-fabricated miters and accessories ensure a proper fit and provide a cleaner appearance while eliminating the need for field fabrication
- » Meets International Building Code requirements

### Installation

For complete installation instructions, refer to Carlisle specifications and details or visit [www.metalera.com/brands/carlisle](http://www.metalera.com/brands/carlisle).

### Finishes

- » Natural mill-finish aluminum
- » Pre-finished Kynar® standard and low gloss
- » Premium metallic Kynar
- » Anodized aluminum – clear, dark bronze, and black
- » Drexlume™ – acrylic coated galvalume

- » HDG90 galvanized steel
- » Custom post-painted Kynar finishes available upon request
- » Please consult color chart for color and gauge/thickness availability, non-stock combinations require minimum order and extended lead time

### Quality Assurance

Tested per ANSI/SPRI Test Method RE-3 and for evaluation of membrane securement strength. Coping shall be certified by Carlisle to design pressures as indicated in current edition of ANSI/SPRI ED-1 Design Standard for Edge Systems Used with Low-Slope Roofing Systems. Meets International Building Code requirements.

### Technical Services

Engineering and shop drawings, as well as long-form specifications and CAD details, are available from Carlisle. Product samples, detail sheets, color chips, and color charts are also available for submittal packages. For personal assistance with questions or submittals, contact Carlisle or your local manufacturer's representative.

### Specifications

|                     |   |
|---------------------|---|
| Profiles            | Tapered<br>Flat<br>Existing Slope   |
| Cover Materials     | 24GA Steel<br>22GA Steel<br>0.040" Aluminum<br>0.050" Aluminum<br>0.063" Aluminum |
| Outside Face Height | 3" (Min)<br>6" (Max)  |
| Wall Width          | 4" (Min)<br>12" (Max)   |
| Inside Face Height  | 2" (Min)<br>6" (Max)  |

### Warranty

Carlisle's SecurEdge One Coping is warranted in conjunction with the roofing system, in an edge-to-edge warranty up to 30 years with 100-mph windspeeds. A non-prorated 35-year Kynar finish warranty is also available.