

16 GAUGE GALVANIZED CHANNEL FILLED WITH 3/8" THICKNESS OF WATER CUT-OFF MASTIC IN WARM SIDE CORNER, PRIOR TO SETTING ON PANEL (BY OTHERS). FASTEN WITH #8 X 3/4" TRUSS HEAD TEK SCREWS SPACED 12" O.C. (BOTH SIDES). FASTEN EXTERIOR SIDE OF CAP FIRST SO CAP IS TIGHT TO EXTERIOR OF PANEL.

INSTALL 9" WIDE PRESSURE-SENSITIVE ELASTOFORM FLASHING & HP-250 PRIMER

PRE-FINISHED GUTTER & HANGERS

FASTEN MEMBRANE EDGE WITH TERMINATION BAR & #8X3/4" TEK SCREWS SPACED 6" O.C.

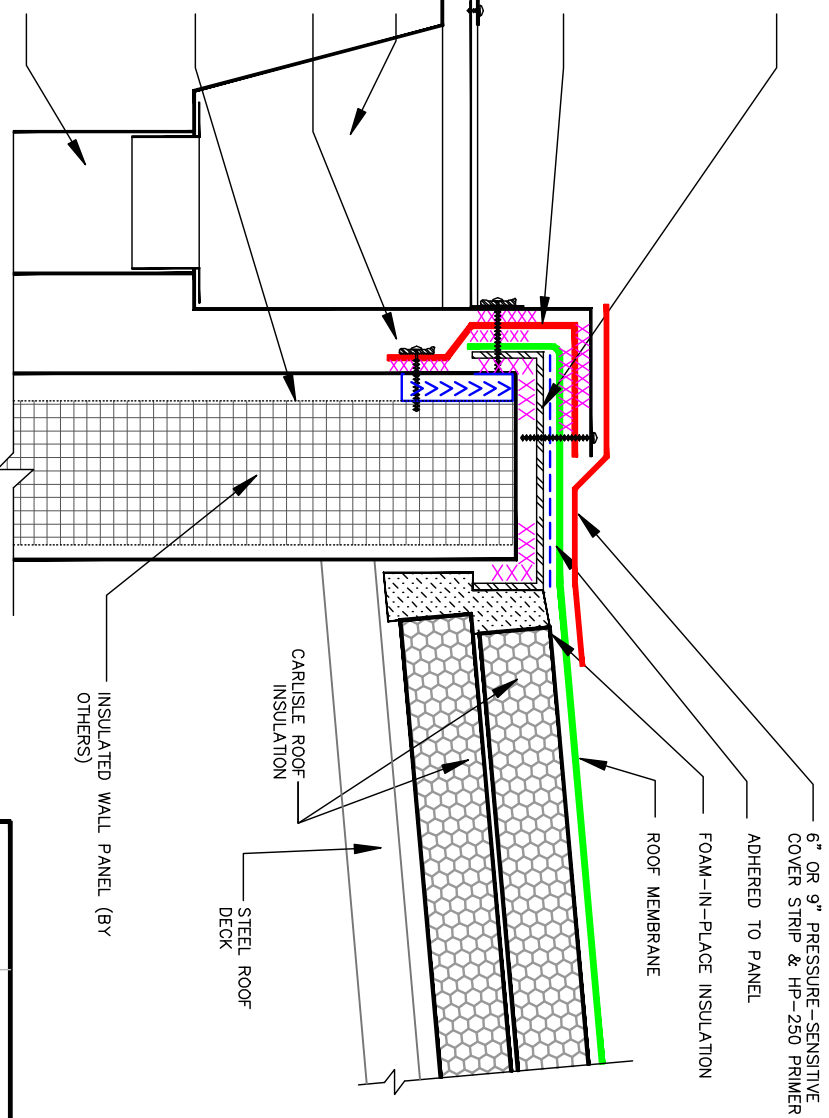
FILL LOWS IN WALL PANEL PROFILE WITH WATER CUT-OFF MASTIC. 4" DOWN FROM TOP OF PANEL. PANEL PROFILE LOWS MUST BE FILLED TO BOTTOM OF FLASHING

DOWNSPOUT

NOTES:
1. ALL GUTTERS, DOWN SPOUTS AND THEIR ACCESSORIES SHALL BE INSTALLED BY OTHERS

2. REFER TO CARLISLE SYNTREC, INC. WHERE BALLASTED ROOF SYSTEM WILL REQUIRE EDGE DETAIL.

DETAIL PROVIDED COURTESY OF GROUP4 MATERIALS, INC. BROOKFIELD, WISCONSIN



XXXXXXXXXX	SURE-SEAL WATER CUT-OFF MASTIC
	FOAM-IN-PLACE INSULATION

COLD STORAGE DETAILS

COLD STORAGE ENVELOPE

IWP: ROOF EDGE WITH GUTTER DETAIL

CS 4.1.1



Carlisle Syntec Incorporated