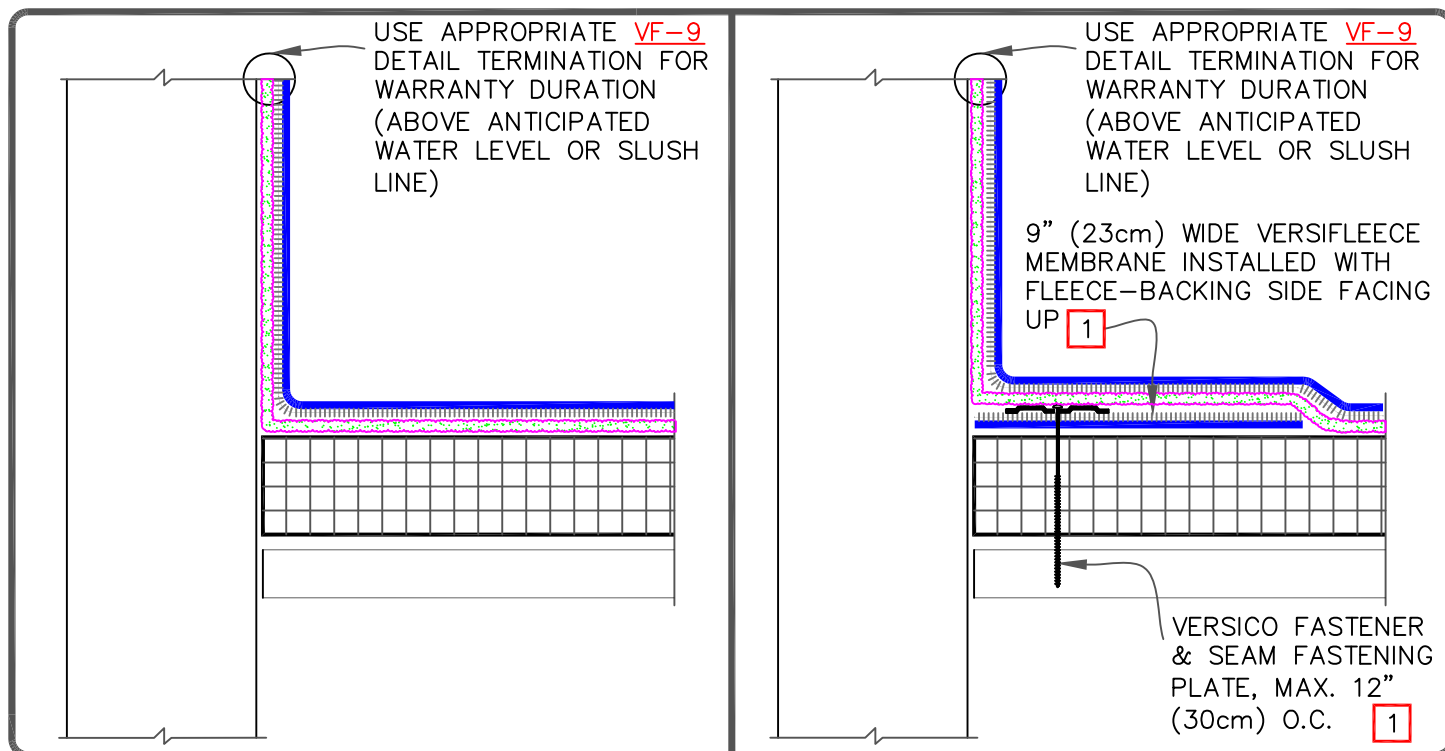


CAUTION

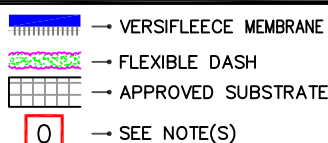
REFER TO [DETAIL VF-12C](#) WHEN USING AQUA BASE 120 ADHESIVE OR HYDROBOND.

NOTES:

1. MECHANICALLY FASTENED BASE SECUREMENT IS REQUIRED WHEN ANY ONE OF THE FOLLOWING MAY OCCUR:
 - 1.1. SPECIFIED WARRANTIES GREATER THAN 20-YEARS.
 - 1.2. WARRANTY WIND SPEEDS GREATER THAN 90MPH.
 - 1.3. PROJECTS WITH CONTROL OR EXPANSION JOINTS OR ANTICIPATED BUILDING MOVEMENT.
 - 1.4. WHEN VERSIFLEECE MEMBRANE IS INSTALLED DIRECTLY OVER AN EXISTING SINGLE-PLY ROOF.
2. WHEN THE USE OF FLEXIBLE DASH (FULL SPRAY) IS NOT FEASIBLE ON THE VERTICAL SUBSTRATE, SEE APPROPRIATE TDB FOR INSTALLATION INSTRUCTIONS FOR BONDING ADHESIVE.



PARAPET/CURB WITH
CONTINUOUS MEMBRANE
— FULL
COVERAGE/SPLATTER



THERMOPLASTIC
VERSIFLEECE
ADHERED

VF-12.2A