

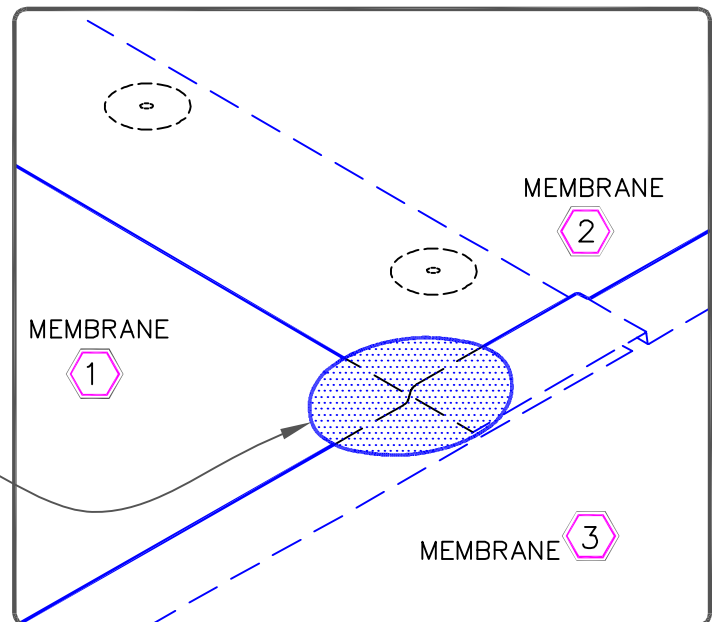
**FASTENER & PRESSURE PLATE TYPES FOR  
DIFFERENT ROOF DECKS**

DECK TYPE	OPTION	FASTENER	PLATE
STEEL OR WOOD	A	HP-X	PIRANHA
	B	HP-XTRA	PIRANHA XTRA
STRUCTURAL CONCRETE	A	CD-10	PIRANHA
	B	HD 14-10	PIRANHA

**NOTES:**

1. POSITION SEAM FASTENING PLATES BEYOND NON-REINFORCED ENCAPSULATED EDGE.
2. APPROXIMATELY 1/8" (0.5cm) DIAMETER BEAD OF CUT-EDGE SEALANT IS REQUIRED ON CUT EDGES OF REINFORCED TPO MEMBRANE.

**WHEN USING 60 OR 80-MIL  
(1.52/2.03mm) THICK MEMBRANE**  
APPLY A 4-1/2" (11.8cm)  
DIAMETER "T-JOINT" COVER AT  
FIELD SPLICE INTERSECTIONS,  
CENTRALLY ALIGNED.



**MECHANICALLY FASTENED ASSEMBLY**



MECHANICALLY FASTENED SEAM,  
PAGE 1 OF 2

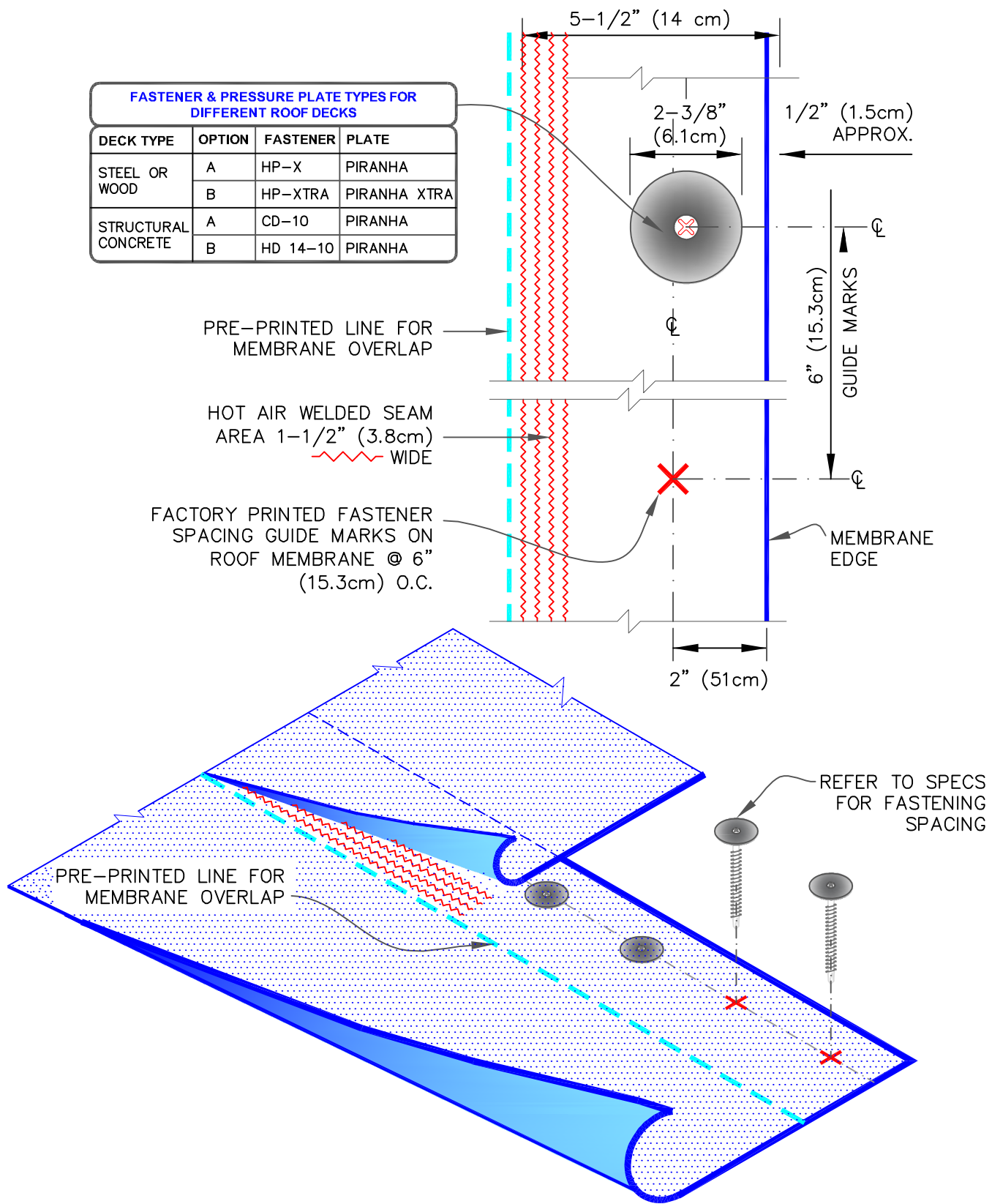
MAXIMUM WARRANTY: 30 YEARS



DETAIL NO.

MF-2A

FASTENER & PRESSURE PLATE TYPES FOR DIFFERENT ROOF DECKS			
DECK TYPE	OPTION	FASTENER	PLATE
STEEL OR WOOD	A	HP-X	PIRANHA
	B	HP-XTRA	PIRANHA XTRA
STRUCTURAL CONCRETE	A	CD-10	PIRANHA
	B	HD 14-10	PIRANHA



## MECHANICALLY FASTENED ASSEMBLY



MECHANICALLY FASTENED SEAM,  
PAGE 2 OF 2

MAXIMUM WARRANTY: 30 YEARS



DETAIL NO.

MF-2A