

WARRANTY
REQUIREMENTS

20 YEAR WARRANTY

SEE DETAIL BELOW

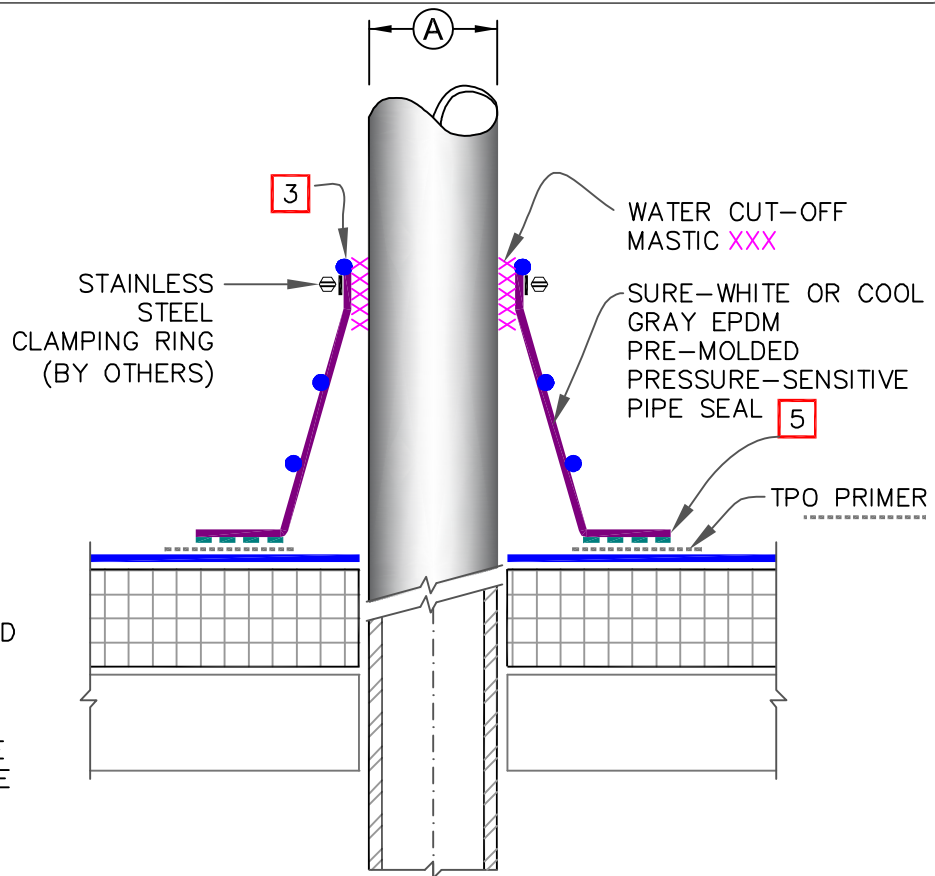
25 OR 30 YEAR WARRANTY

REFER TO CARLISLE TYPICAL TPO DETAIL [U-8A](#).
NO FIELD-FABRICATION ALLOWED FOR 25/30 YEAR ROOF.

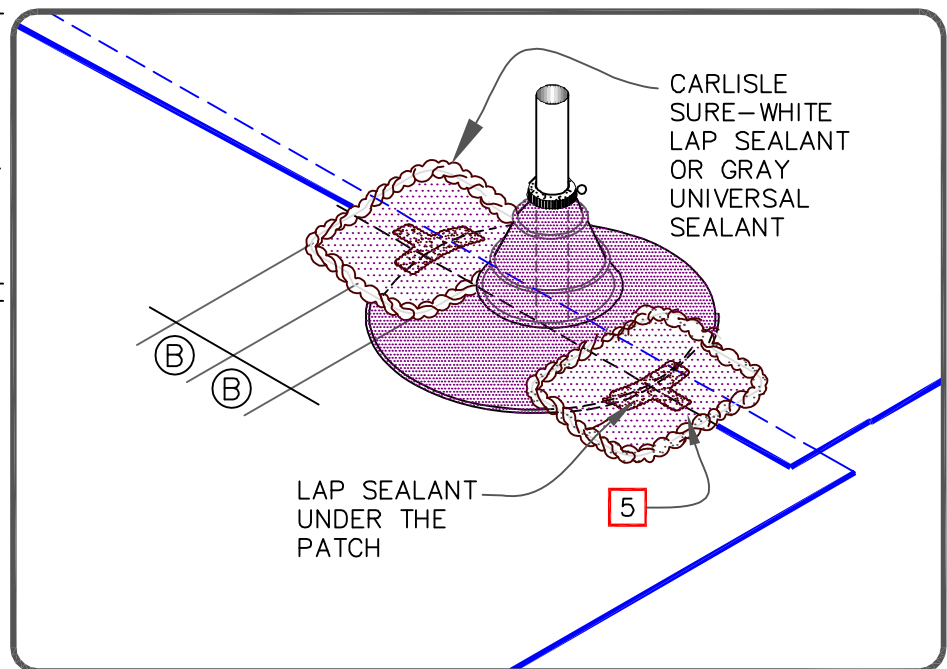
DIMENSIONS	cm	
(A) 1/2"	1.5	TO
6"	15	
(B) 3"	7.5	

NOTES:

1. REMOVE ALL LEAD AND OTHER FLASHING BEFORE INSTALLING PRESSURE-SENSITIVE PIPE SEAL.
2. TEMPERATURE OF THE PIPE PENETRATION MUST NOT EXCEED 180°F (82°C).
3. PRE-MOLDED PIPE FLASHING MUST HAVE INTACT RIB AT THE TOP EDGE REGARDLESS OF PIPE DIAMETER.
4. DECK FLANGES OF THE PRESSURE-SENSITIVE PIPE SEAL SHALL NOT BE OVERLAPPED, CUT OR APPLIED OVER ANY ANGLE CHANGE.
5. WHEN A FIELD SPLICE INTERSECTS A PIPE SEAL, APPLY SURE-WHITE LAP SEALANT OR GRAY UNIVERSAL SEALANT ALONG THE EDGE OF THE MEMBRANE SPLICE COVERING THE EXPOSED SPLICE TAPE 1/2" (1.5cm) IN EACH DIRECTION FROM THE SPLICE INTERSECTION & OVERLAY WITH A 7"X9" (18cm X 23cm) T-JOINT COVER.
6. ON MECHANICALLY-FASTENED ROOFING SYSTEMS, ADDITIONAL MEMBRANE SECUREMENT IS REQUIRED. REFER TO DETAIL [U-8A & TABLE ON THIS PAGE](#).



TPO WITH EPDM FLASHING

PIPE: PRE-MOLDED
PRESSURE-SENSITIVE EPDM PIPE SEAL

SEE WARRANTY REQUIREMENT TABLE ON TOP OF PAGE.



DETAIL NO.

U-8AT