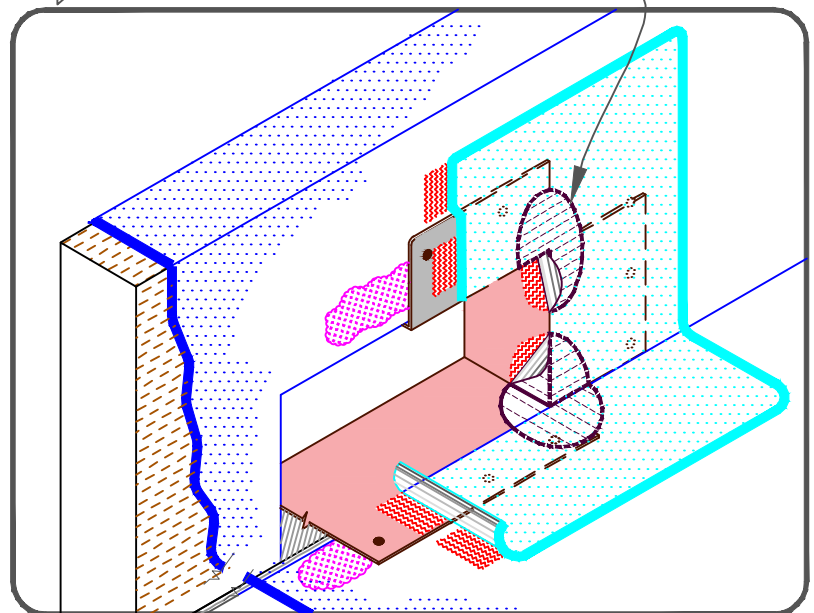


NOTES:

1. WOOD NAILERS ARE INSTALLED AT SCUPPERS TO SECURE METAL SLEEVE AND MUST EXTEND PAST THE WIDTH OF METAL SLEEVE FLANGE.
2. METAL SCUPPER BOX MUST HAVE FOLDED FLANGE CORNERS FULLY COVERED BY OUTSIDE CORNER FLASHING.
3. WATER CUT-OFF MASTIC UNDER SCUPPER FLANGES MUST BE UNDER CONSTANT COMPRESSION.
4. SCUPPER FLANGES MUST BE TOTALLY COVERED BY NON- REINFORCED FLASHING WITH MINIMUM 2" (5cm) COVERAGE PAST NAIL HEAD.



PREFABRICATED SCUPPER WITH PVC COATED METAL

MAXIMUM WARRANTY: 30 YEARS



DETAIL NO.

U- 18A

U (Universal Detail)