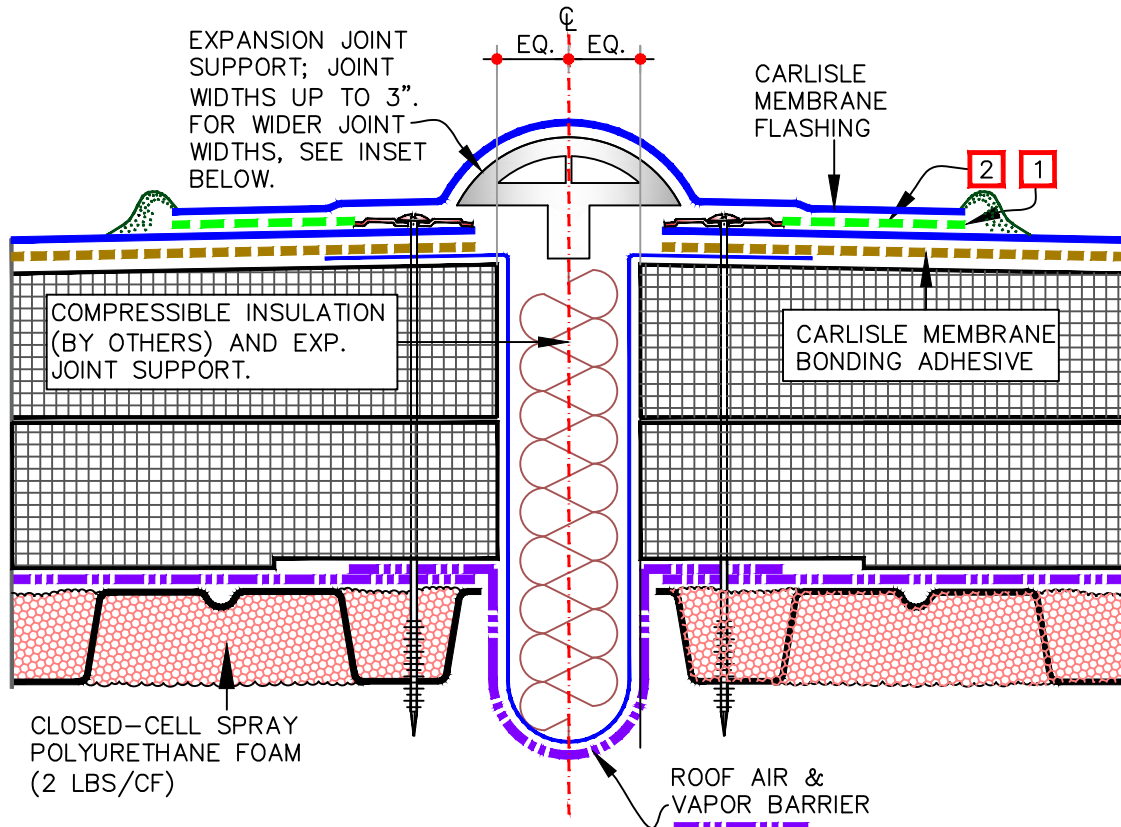


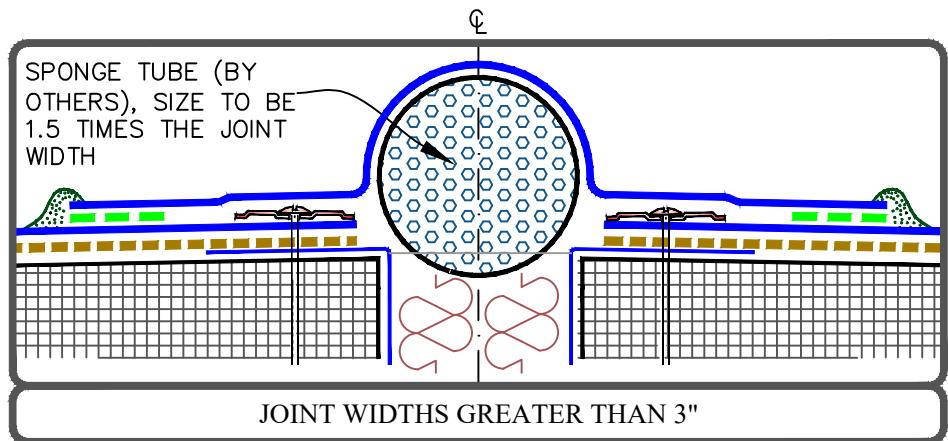
CAUTION

ENSURE EXPANSION JOINT ENDS ARE COMPLETELY SEALED AT BOTH ENDS OF THE EXPANSION JOINT TO ENSURE NO AIR INFILTRATION OCCURS.



NOTES:

1. 1/8" CUT-EDGE SEALANT FOR TPO ONLY
2. 3" OR 6" SecurTAPE WITH EPDM PRIMER FOR EPDM OR 1 1/2" MIN. HOT AIR WELD FOR TPO, PVC, OR KEE HP.



	DECK-TO-DECK EXPANSION JOINT - ALL MEMBRANES		DETAIL NO.
	MAXIMUM WARRANTY: 20 YEARS		CS-3.1
		Cold Storage Details	