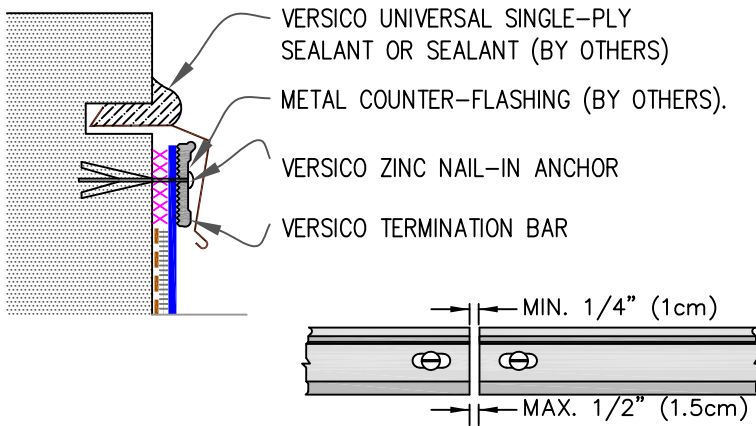


9.1

MECHANICAL TERMINATION WITH COUNTER FLASHING

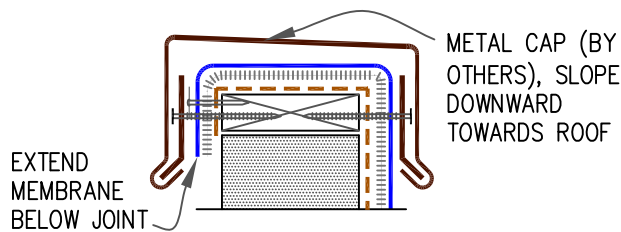


NOTES:

1. APPLY ON HARD SMOOTH SURFACE ONLY; NOT FOR USE ON EXPOSED WOOD.
2. DO NOT WRAP COMPRESSION TERMINATION BAR AROUND CORNERS.
3. FLEECE-BACKING MUST BE REMOVED FROM THE MEMBRANE SO THAT WATER CUT-OFF MASTIC IS IN DIRECT CONTACT.
4. DETAIL 9.5 MUST BE USED AT VERTICAL JOINTS IN PANEL WALLS.

9.2

SHEET METAL COPING

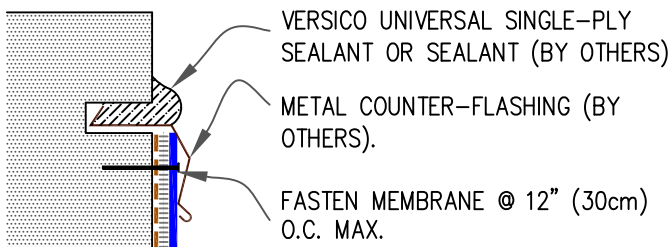


NOTES:

1. FOR VERSICO VERSITRIM COPING, REFER TO INSTALLATION INSTRUCTIONS PUBLISHED SEPARATELY.
2. MEMBRANE MUST BE EXTENDED TO CORNERS TO PROVIDE COMPLETE COVERAGE OF THE TOP WALL SURFACE.

9.3

COUNTER FLASHING TERMINATION

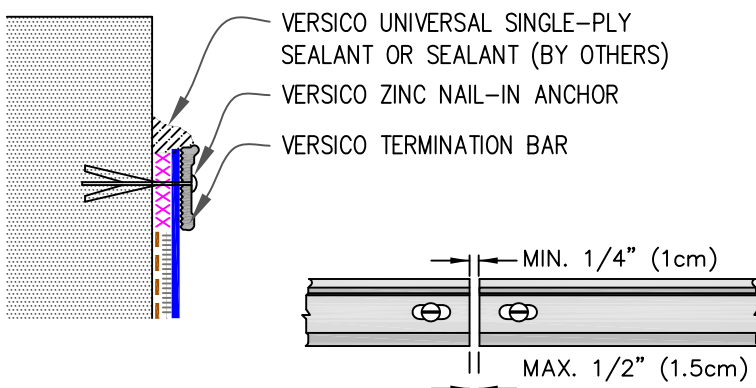


NOTES:

1. WHEN MECHANICAL FASTENERS ARE USED TO PENETRATE THE METAL COUNTER-FLASHING, USE EPDM WASHERS, APPLY WATER CUT-OFF MASTIC UNDER THE COUNTER-FLASHING OR CAULK THE FASTENER HEADS.
2. DETAIL NOT FOR USE ON WARRANTY PROJECTS EXCEEDING 10-YEARS.

9.4

MECHANICAL TERMINATION



NOTES:

1. APPLY ON HARD SMOOTH SURFACE ONLY; NOT FOR USE ON EXPOSED WOOD.
2. DO NOT WRAP COMPRESSION TERMINATION BAR AROUND CORNERS.
3. FLEECE-BACKING MUST BE REMOVED FROM THE MEMBRANE SO THAT WATER CUT-OFF MASTIC IS IN DIRECT CONTACT.
4. DETAIL NOT FOR USE ON WARRANTY PROJECTS EXCEEDING 20-YEARS.
5. DETAILS 9.5 MUST BE USED AT VERTICAL JOINTS IN PANEL WALLS.

----- BONDING ADHESIVE, TYPE III OR IV
ASPHALT OR COLD APPLIED ADHESIVE

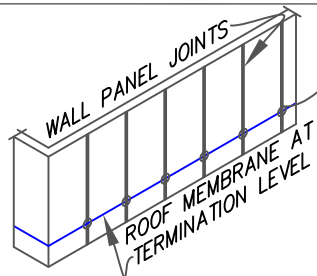
XXXXXXX

VERSICO WATER CUT-OFF MASTIC MUST
BE UNDER COMPRESSION

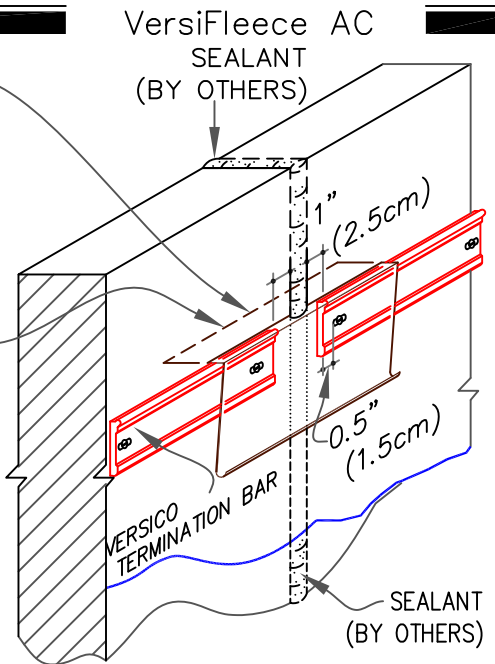
9.5 MECHANICAL TERMINATION AT VERTICAL JOINTS

NOTES:

1. THIS DETAIL IS RECOMMENDED FOR ANY PROJECT REGARDLESS OF WARRANTY.
2. CONTINUOUS COUNTER FLASHING REQUIRED FOR WARRANTY PROJECTS EXCEEDING 20-YEARS.
3. VERTICAL JOINTS IN THE PRE-CAST PANEL AS WELL AS ALL GAPS AT THE JUNCTION OF THE TILT-UP PANEL AND ROOF DECK MUST BE FULLY SEALED TO PREVENT AIR INFILTRATION.
4. APPLY ON HARD SMOOTH SURFACE ONLY.
5. THIS DETAIL MUST BE USED FOR ANY PROJECT REGARDLESS OF WARRANTY.



METAL COUNTER FLASHING (BY OTHERS)



9.6 VERSITRIM COPING

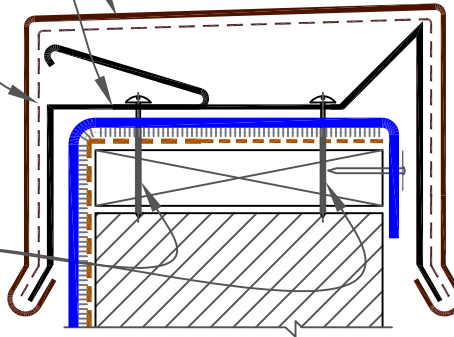
COPING

20 GA. GALVANIZED ANCHOR CLIPS @ 6 FEET (183cm) O.C.

CONCEALED SPLICE PLATE AT EACH JOINT OF COPING

HEX-HEAD FASTENERS

VERSITRIM & VERSITRIM 300 COPINGS

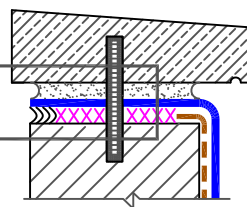


NOTES:

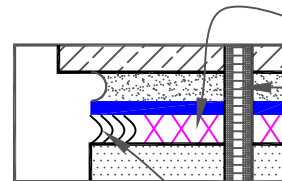
1. MEMBRANE MUST BE EXTENDED AT CORNERS TO PROVIDE COMPLETE COVERAGE OF THE TOP WALL SURFACE. REFER TO [DETAIL TPC-9.0B](#).
2. REFER TO [VERSITRIM COPING INSTALLATION INSTRUCTION MANUAL](#) FOR STEP-BY-STEP INSTRUCTION PROCEDURES.

9.7 COPING STONE TERMINATION

SEE INSET ON RIGHT



COPING STONE (BY OTHERS)



WATER CUT-OFF MASTIC AROUND DOWEL OR ANCHOR
DOWEL OR ANCHOR (BY OTHERS)
SEALANT UNDER THE MEMBRANE LIP (BY OTHERS)

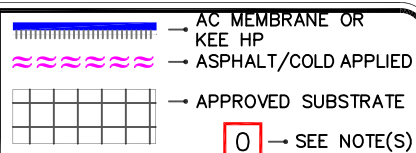
BONDING ADHESIVE, TYPE III OR IV ASPHALT OR COLD APPLIED ADHESIVE

XXXXXXX

CARLISLE WATER CUT-OFF MASTIC MUST BE UNDER COMPRESSION



MEMBRANE TERMINATIONS
PAGE 2 OF 2



VERSIFLEECE
AC OR KEE HP

AC-9.0