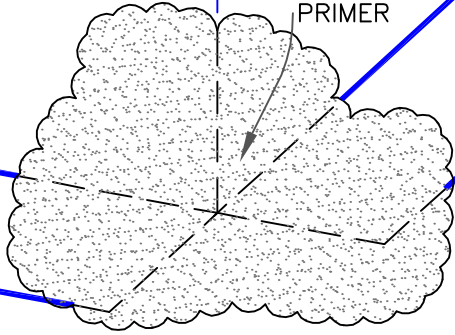
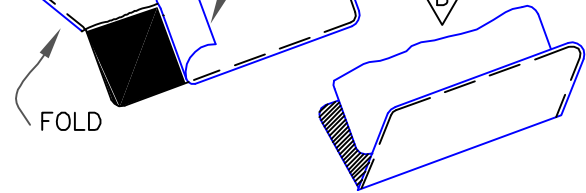


1

EPDM
PRIMER

CLEAN EPDM SPLICE AREA PRIOR TO APPLYING EPDM PRIMER.

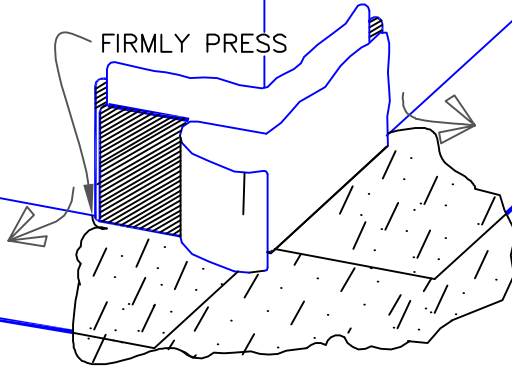
2

STEP
ACLEAR POLY
RELEASE PAPERSTEP
B

PRIOR TO PLACEMENT OF SURE-SEAL CORNER, PEEL OFF THE BLUE POLY RELEASE FILM AND HEAT THE FLASHING SIDE WITH A HEAT GUN. RE-APPLY THE POLY LOOSELY. FOLD THE FLASHING IN HALF.

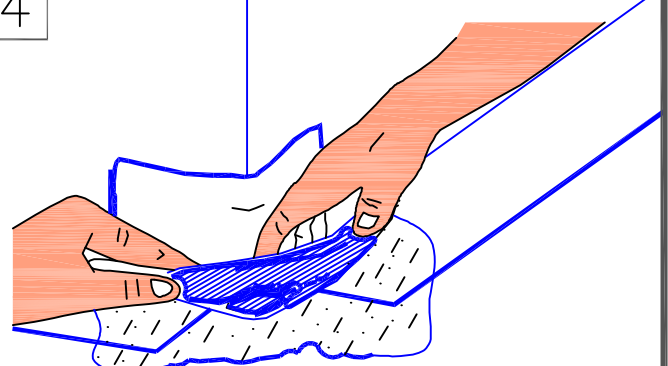
3

FIRMLY PRESS



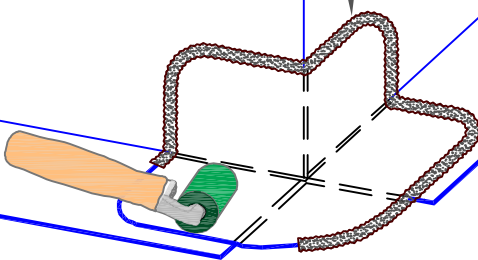
PLACE VERSIGARD INSIDE/OUTSIDE CORNER AS SHOWN AND REMOVE RELEASE PAPER. PRESS FOLDED FLASHING TIGHTLY INTO ANGLE CHANGE AND FIRMLY PRESS FLASHING AGAINST THE VERTICAL SURFACE.

4



PLACE FOLDED FLASHING TIGHTLY INTO ANGLE CHANGE AND FIRMLY PRESS FLASHING ONTO THE DECK FLANGE BY PRESSING THE FLASHING AGAINST THE HORIZONTAL SURFACE.

5

LAP
SEALANT

ROLL WITH A TWO INCH WIDE ROLLER. PAY PARTICULAR ATTENTION TO THE STEP OFFS AND ANGLE CHANGE.

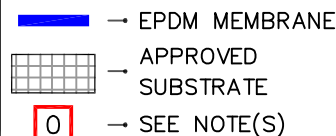
NOTE:

- FOR PROJECTS WITH 25 & 30-YEAR WARRANTIES OR WHEN USING 90-MIL MEMBRANE, SEE [DETAIL VGC-15.7A](#) FOR REQUIRED FLASHING ENHANCEMENTS.

MAXIMUM WARRANTY: 20 YEARS. SEE [NOTE 1](#)



OUTSIDE CORNER WITH
PRE-CUT QUICK-APPLIED
CORNER



VersiGard COMMON
DETAILS (EPDM)

VGC-15.5