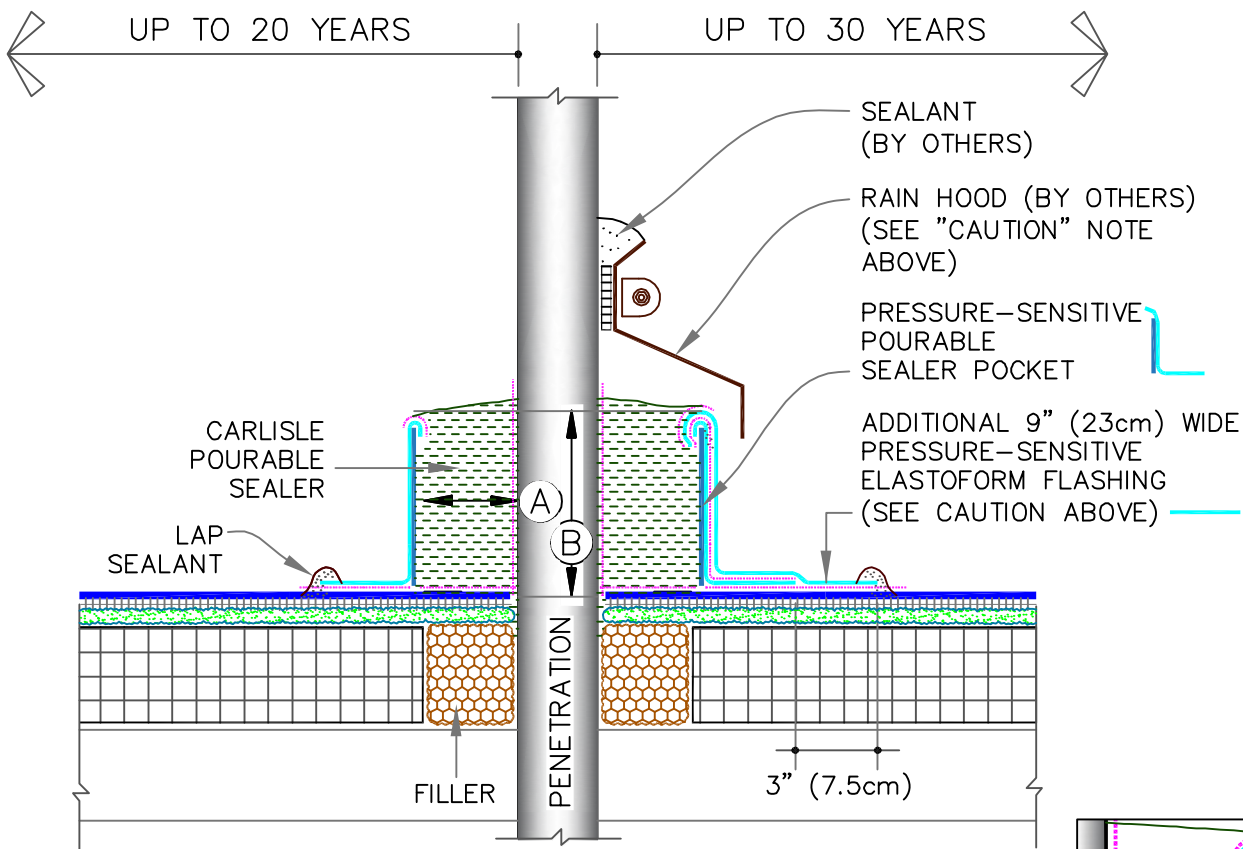


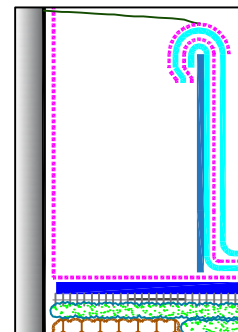
CAUTION

POURABLE SEALER POCKETS MUST BE USED IN CONJUNCTION WITH RAIN HOODS AND AN EXTRA LAYER OF PRESSURE SENSITIVE ELASTOFORM FLASHING [EXTENDING 3" (7.5cm) BEYOND THE BASE LAYER OF FLASHING] FOR PROJECTS WITH 25 AND 30-YEAR WARRANTIES.



NOTES:

1. THE MAXIMUM ALLOWABLE SURFACE TEMPERATURE OF THE PENETRATION SHALL NOT EXCEED 180° F (82° C).
2. ALL DEBRIS (PAINT, RUST, LEAD, OTHER FLASHINGS, ETC.) MUST BE REMOVED FROM THE PENETRATION.
3. PENETRATIONS, MEMBRANE, FLASHING AND METAL (INSIDE POCKET) MUST BE PRIMED WITH EPDM PRIMER PRIOR TO APPLYING POURABLE SEALER. DO NOT PRIME THE BLUE PLASTIC SUPPORT STRIP.
4. POURABLE SEALER MUST COMPLETELY FILL POURABLE SEALER POCKET TO PREVENT PONDING OF WATER.
5. POURABLE SEALER MUST CONTACT PRIMED PRESSURE-SENSITIVE ELASTOFORM FLASHING AND DECK MEMBRANE.
6. SECUREMENT IS REQUIRED FOR POURABLE SEALER POCKETS WHICH ARE GREATER THAN 18" (46cm) IN DIAMETER. REFER TO SPECIFICATIONS.
7. ON MECHANICALLY-FASTENED ROOFING SYSTEMS, ADDITIONAL MEMBRANE SECUREMENT IS REQUIRED (SIMILAR TO [DETAIL MF-8A](#)) REGARDLESS OF SIZE OR DIAMETER.
8. PIPE CLUSTERS MUST HAVE MINIMUM 1" (2.5cm) CLEARANCE BETWEEN PENETRATIONS.



MANDATORY EPDM PRIMER AT ALL INTERFACES OF POURABLE SEALER EXCEPT BLUE PLASTIC SUPPORT STRIP

DIMENSIONS	cm	
(A)	1"	2.5 MIN.
(B)	2"	5 MIN.

	EPDM PRESSURE-SENSITIVE POURABLE SEALER POCKET MAXIMUM WARRANTY: 30 YEARS	DETAIL NO. FB-16A.1
		FLEECEBACK ADHERED