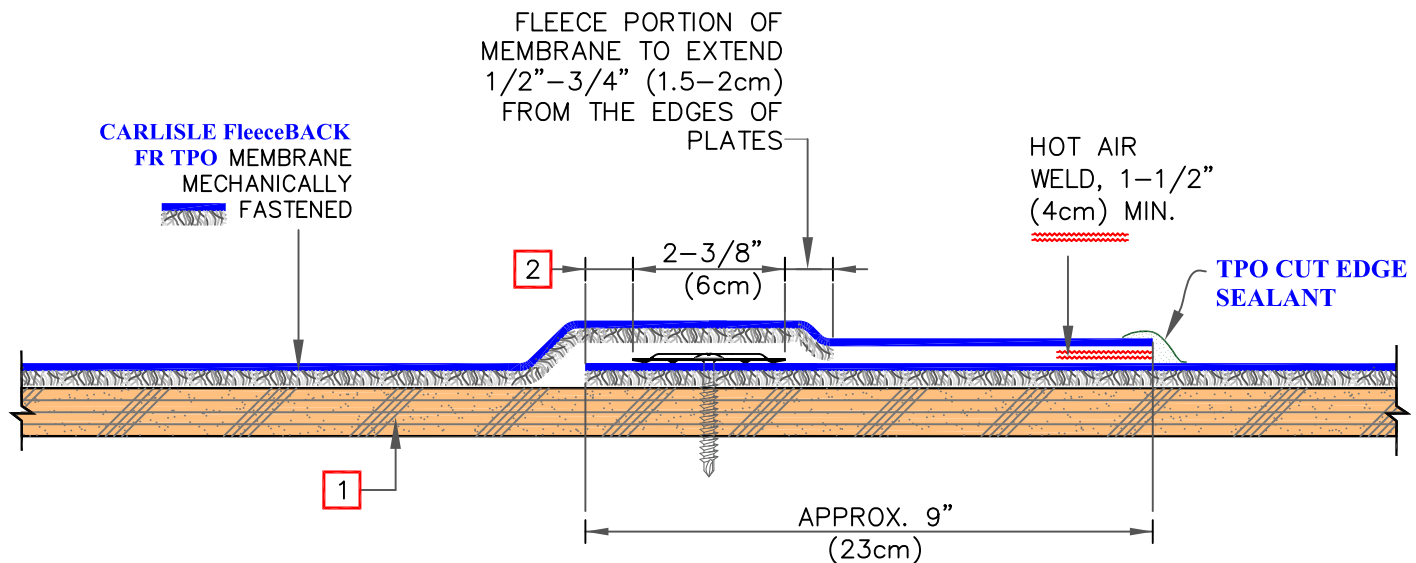


DETAIL A (TYPICAL SEAM)



DETAIL B (SEAM FOR OBTAINING HAIL WARRANTY COVERAGE)

NOTES:

1. COMBUSTIBLE DECK, MAX. SLOPE $\frac{1}{4}$ " PER FOOT – PLYWOOD SHOWN. ON EXISTING DECKS, REMOVE PROTRUDING NAILS/FASTENERS AND REPLACE WITH NEW THREADED FASTENERS.
2. PLATE EDGES $\frac{1}{2}$ "– $\frac{3}{4}$ " (1.5–2cm) FROM THE EDGE OF MEMBRANE.

DIRECT APPLICATION OVER WOOD DECK

For additional information, refer to Specifications



DETAIL NO.

FR-2.1

FR (FIRE RATED)