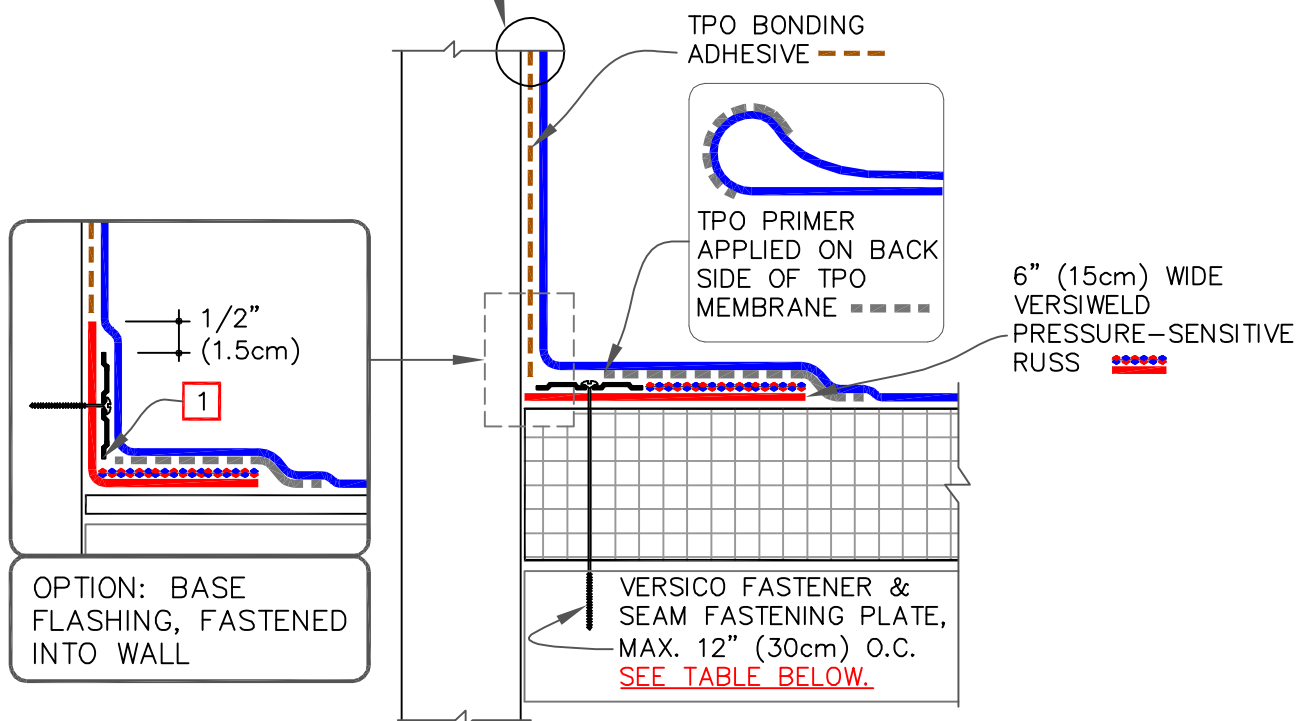


CAUTION

FASTENERS AND PLATES ARE REQUIRED AT 6" (15cm) O.C. FOR ALL SYSTEMS WITH WARRANTY WIND SPEED COVERAGE GREATER THAN 90 MPH AND FOR ALL PROJECTS WITH WARRANTIES GREATER THAN 20 YEARS.

USE APPROPRIATE TPC-9.0 DETAIL TERMINATION FOR WARRANTY DURATION (ABOVE ANTICIPATED WATER LEVEL OR SLUSH LINE)

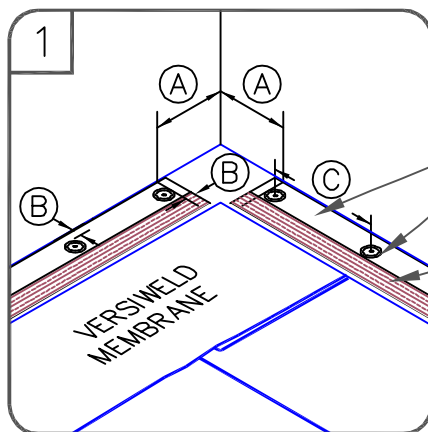


## NOTE:

1. IN A CASE WHERE FASTENERS MUST BE FASTENED INTO THE VERTICAL SURFACE, CARE MUST BE TAKEN TO PRESS THE QA RTS, AS WELL AS THE MEMBRANE, TIGHTLY INTO THE ANGLE CHANGE TO MAXIMIZE CONTACT BETWEEN THE TAPE AND MEMBRANE. MEMBRANE MUST BE ADHERED TO THE FULL WIDTH OF THE TAPE. PLACING THE PLATES TIGHT INTO THE ANGLE CHANGE WILL HELP HOLD THE QA RTS IN THE PROPER POSITION.

## FASTENER TYPES ON MECHANICALLY FASTENED ROOF ASSEMBLY

DECK TYPE	OPTION	FASTENER	PLATE
STEEL OR WOOD	A	HPVX	HPVX
	B	HPV-XL	HPV-XL
STRUCTURAL CONCRETE	A	CD-10	HPVX
	B	MP 14-10	HPVX



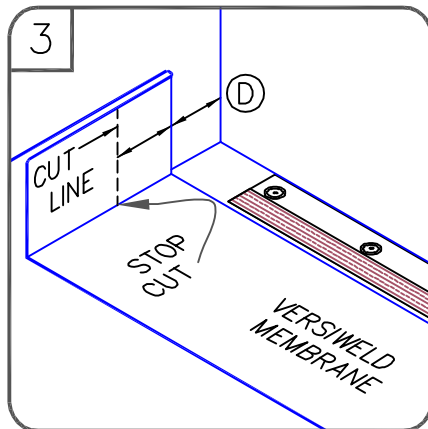
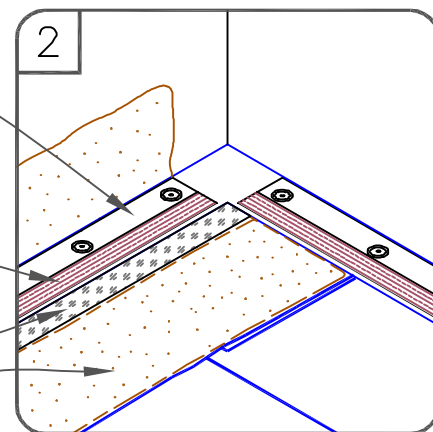
6" (15cm) WIDE  
PRESSURE-SENSITIVE RUSS  
(REINFORCED UNIVERSAL  
SECUREMENT STRIP)

VERSICO FASTENER &  
SEAM FASTENING PLATE,  
MAX. 12" (30cm) O.C.

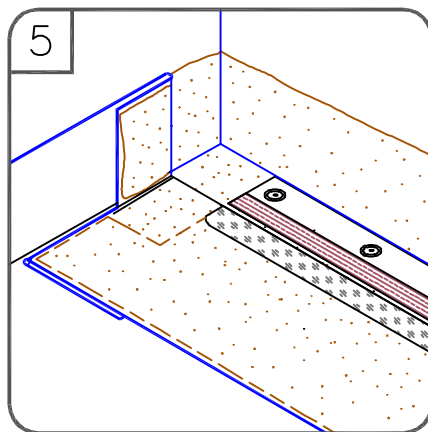
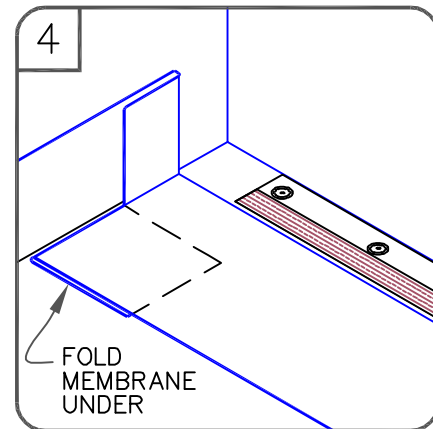
PRE-APPLIED PEEL &  
STICK TAPE

TPO PRIMER

VERSIWELD  
BONDING ADHESIVE



DIMENSIONS	cm	
(A) 6"	15	TO
9"	23	
(B) 1/8"	0.5	MIN.
1"	2.5	MAX.
(C) 12"	30	MIN.
(D) 6"	15	MIN.
(E) 1-1/2"	4	MIN.

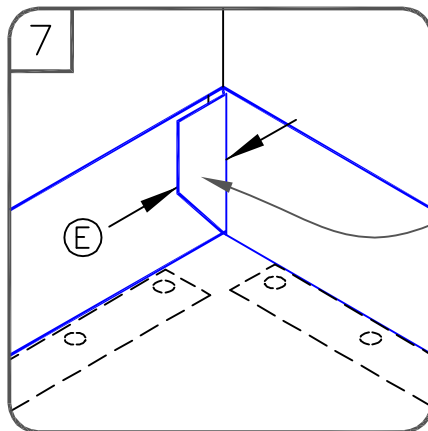
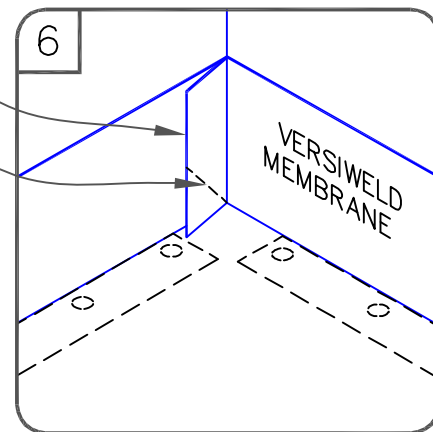


HOT AIR WELD FLAP  
IN [STEP 7](#)

CUT AT 45°

#### NOTES:

1. THE CUT SECTION OF VERTICAL MEMBRANE WILL BE FOLDED UNDER THE FIELD MEMBRANE AS SHOWN IN [STEP 4](#).
2. APPLY INSIDE CORNER IN ACCORDANCE WITH VERSICO [DETAILS TPC-15.1 OR TPC-15.2](#).



HOT AIR WELD

USE APPROPRIATE [TPC-9.0](#) DETAIL  
TERMINATION FOR WARRANTY  
DURATION (ABOVE ANTICIPATED WATER  
LEVEL OR SLUSH LINE)

