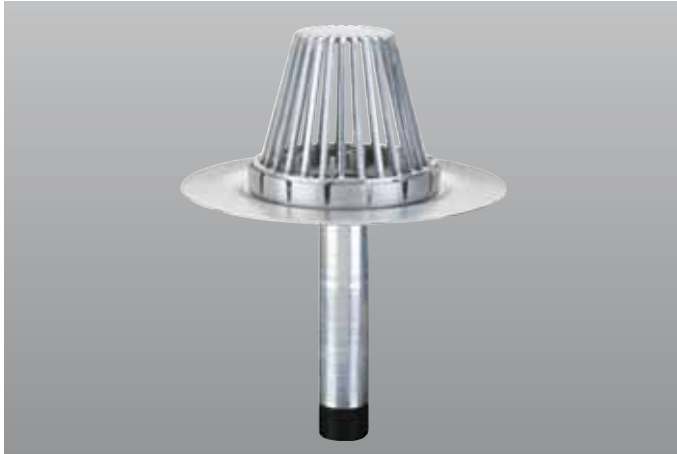


# Hercules Retrofit Drain



## Overview

Carlisle's Hercules Retrofit Drain consists of a one-piece spun aluminum body with a heavy-duty cast aluminum strainer dome and clamping ring. The drain flange has a depressed sump area to facilitate water drainage from the roof surface, and the U-Flow® Seal provides a mechanical watertight connection to PVC or cast iron pipes.

## Features and Benefits

- » One-piece seamless body provides strength and durability without separation of the flange from the stem
- » Simple to install from the rooftop without disturbing occupants
- » Cast aluminum strainer dome and clamping ring enhance strength and durability
- » 12"-long drain stem accommodates most existing field conditions; longer lengths are available upon request
- » Meets ULC/ORD C790.4 and ANSI/SPRI RD-1 to assure a leak-free connection to existing plumbing

## Installation

For use with Sure-Seal® EPDM, Sure-Weld® TPO, and Sure-Flex™ PVC and KEE HP membranes. Remove existing strainer dome and clamping ring. Remove other existing drain components as required to enable flange to lie flush on roof membrane. Remove any debris or constricting materials in the existing drain pipe that interfere with proper installation.

1. Examine the existing water leader to make sure there are no elbows that prevent the drain stem from being fully inserted into the pipe. Insert U-Flow Seal into end of drain stem and tighten screws enough to hold the seal in place during installation. Insert assembled drain into existing leader pipe until flange lies flush with roof membrane.

2. Alternately tighten seal compression ring screws with U-Flow Screwdriver until hand-tight. Drain body is correctly installed when pressure placed on drain body results in no vertical movement. Do not overtighten the screws.
3. Secure the drain flange to the roof deck/nailer using a minimum of three pan-head fasteners evenly spaced around the flange. Install Water Cut-Off Mastic and flashing membrane per Carlisle specifications and details.
4. Place clamping ring over metal studs. Install stainless steel nut and lock washers, tightening clamping ring against membrane flashing until secure.
5. Install strainer dome by aligning screw holes with the holes in the clamping ring. Secure with screws provided.

*Review Carlisle specifications and details for complete installation information.*

## Precautions

- » Be sure the drain leader is thoroughly cleared of build-up and debris.
- » The top of the tapered metal cone should remain inside the bottom of the urethane seal. Do not fully disengage the cone from the urethane seal.
- » The backflow rods should be snug when fully activated. Do not overtighten.
- » When installing the metal clamping ring, do not overtighten the provided lock nuts.

## Packaging

Size	Dome Type	Packaging	Weight
3"	Aluminum	Each	8.5 lbs
4"	Aluminum	Each	8.5 lbs
5"	Aluminum	Each	8.5 lbs
6"	Aluminum	Each	8.5 lbs

## Typical Properties and Characteristics

Drain Body	11-gauge (.125") spun aluminum
Seal	Watertight U-Flow mechanical seal (requires U-Flow screwdriver)
Flange	17 ½" diameter with sump area
Strainer Dome	Cast aluminum
Stem	12" length
Clamp Ring	Cast aluminum

Typical properties and characteristics are based on samples tested and are not guaranteed for all samples of this product. This data and information is intended as a guide and does not reflect the specification range for any particular property of this product.