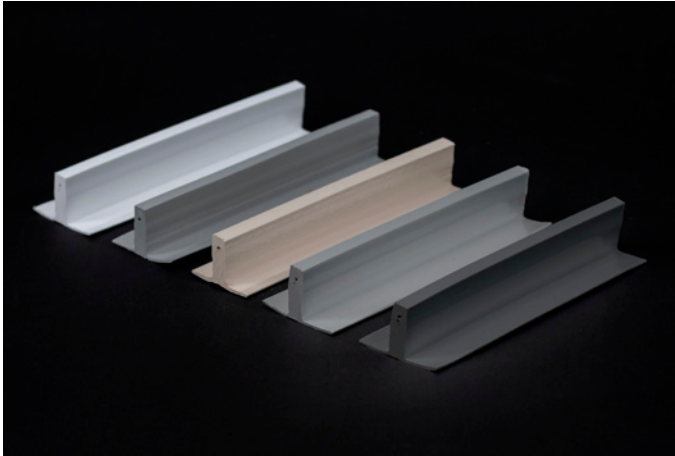


# Sure-Flex™ PVC

## Contour Rib™ Profile



### Overview

Obtain the look of standing seam metal roofing with the performance of a PVC single-ply membrane with the Carlisle Contour Rib Profile. This profile is extruded from the same weather-resistant PVC compound as the membrane. The Contour Rib Profile is secured to the PVC roofing membrane to simulate a standing seam metal roofing system. The physical dimensional stability of the profile is enhanced with fiberglass and the rectangular profile provides exceptional shadow lines for aesthetic appeal. Available in White, Gray, Tan, Light Gray and Slate Gray.

The Contour Rib Profile measures 1¼" tall and 2⅝" wide including the welding flanges while the vertical profile is a substantial ⅝" thick. The profile has an ⅛" alignment hole as well as an ⅛" fiberglass reinforcing cord. The Contour is available in 10' lengths packaged 20 per carton. Twenty-five (25) connecting pins are also included in the carton.

### Features and Benefits

- » Available in white, gray, tan, light gray and slate gray
- » Same weatherability as membrane
- » Improves aesthetics of sloped roofs
- » Zero maintenance
- » Lower cost than conventional metal roofing
- » Flexible heat-weldable flange allows easy welding of the profile to the roofing membrane

- » Fiberglass reinforcement adds dimensional stability
- » Low-volatility plasticizer
- » Creative installations allow for building design features
- » Proper installation does not affect watertight integrity of membrane
- » Non-penetrating application

### Installation

The Sure-Flex PVC Contour Rib Profile is designed for use with FleeceBACK PVC adhered roofing systems, but may also be used with adhered Sure-Flex PVC systems. Ensure that all welding surfaces are clean and dry.

Method 1 – Using a standard autowelder and hand welding

Method 2 – Using the Hapco, Inc. Standing Seam Profile Wheel Kit Part Number 107081C2

*Review Carlisle specifications and details for complete installation information.*

### Precautions

- » Use proper stacking procedures for cartons to ensure sufficient stability.
- » Exercise caution when walking on wet membrane.
- » Sunglasses that filter out ultraviolet light are strongly recommended as the membrane's white surface is highly reflective to sunlight. White surfaces reflect heat and light. Roofing technicians should dress appropriately and wear sunscreen to protect skin from the sun.
- » White surfaces reflect heat and may become slippery due to frost and ice accumulation.
- » Care must be exercised when working close to a roof edge when the surrounding area is snow covered.
- » Sure-Flex PVC membrane exposed to the weather must be prepared with Carlisle PVC Membrane Cleaner prior to hot-air welding.

# Sure-Flex PVC

## Contour Rib Profile

### Typical Properties and Characteristics (Per purchasing spec)

Length (inches)	120 ± ¼
Weight/Ln Ft (lb)	0.40
Weight/Piece (lb)	4.2
Height (inches)	1.25 ± <sup>3</sup> / <sub>100</sub>
Width (inches)	2.125 ± <sup>1</sup> / <sub>25</sub>
Pieces/carton	20
Connecting pins/carton	25

Typical properties and characteristics are based on samples tested and are not guaranteed for all samples of this product. This data and information is intended as a guide and does not reflect the specification range for any particular property of this product.

### LEED® Information

Pre-consumer Recycled Content	10%
Post-consumer Recycled Content	0
Manufacturing Location	Mount Airy, NC